

MARTINAIRE ROUTE DESCRIPTION

MRA 630

UPDATED: 06/06/2023

ROUTE NUMBER/CUSTOMER: 630/UPS

ROUTE BASE: MON(PM) –SAT(AM)

DAYS OF OPERATION: MON (PM) – SAT (AM)

ROUTE:

LEG:	DAYS:	SCHEDULED TIMES:	PART 135:	PART 91:
ECP-ABY	MON – FRI (PM)	20:05-2050 CT (21:05-21:50 ET)	✓	
ABY-ECP	TUE - SAT (AM)	05:35-06:15CT (6:35-07:15 ET)	✓	

IN POSITION TIME:

PM: ECP (MON: FRI) 19:05 CT
UPS#1366 TYPICAL ARRIVAL 0520 ET
TYPICAL ARRIVAL OF FREIGHT 0600 ET (0540 FOR THE METRO)

DESTINATION:	SUGG ALTERNATE:
KABY	KMCN, KCSG
KECP	DHN

ROUTE NOTES:

ABY TOWER CLOSED UNTIL 0800, CALL JAX CENTER 125.75 READY AT RUNWAY FOR IFR.

CLEARANCE:

LEG:	ROUTE:	ALTITUDE:
ABY-ECP	<i>Marianna VOR (MAI) then DIRECT</i>	6000
ECP-ABY	<i>Marianna VOR (MAI) the DIRECT</i>	5000

CLEARANCE NOTES:

FUEL:

LOCATION:	FUEL REQUIRED	VENDOR:	FREQ:
ABY	<i>1200 – 1500 LBS</i>	<i>EAGLES OF AMERICA</i>	129.80
ECP	<i>AS REQUIRED</i>	<i>SHELTAIR</i>	130.0

FUEL NOTES: ****ROUND TRIP FUEL FROM ABY PREFERED ****

You will be fueled @ 0545 AM before you receive your final weight. If able, upload round trip fuel. If not, fuel is available in ECP. FBO Pedestrian Gate code in ABY is 1540. Gate M code 8732. Access to Car Parking and Pilots room."

CONTACT NUMBERS:

CUSTOMER CONTACTS:

MARTINAIRE ROUTE DESCRIPTION

MRA 630

ABY UPS 229-888-8183
ECP UPS (Driver) 850-896-7429

WEATHER CONTACTS:

ABY ASOS 229-434-7494
ECP AWOS 850-235-7857

FBO CONTACTS:

ABY EAGLES OF AMERICA: 229-434-8787 Mgrs. Ann Slocum, Shiela
850-233-4717 (After hours 10pm to 6am 850-630-9748)
ABY Director of Maintenance Kirby Hicks 229-434-9177

ECP SHELTAIR 850-233-3333

HOTEL CONTACTS:

~~ABY-Rent room from Eagles of America~~

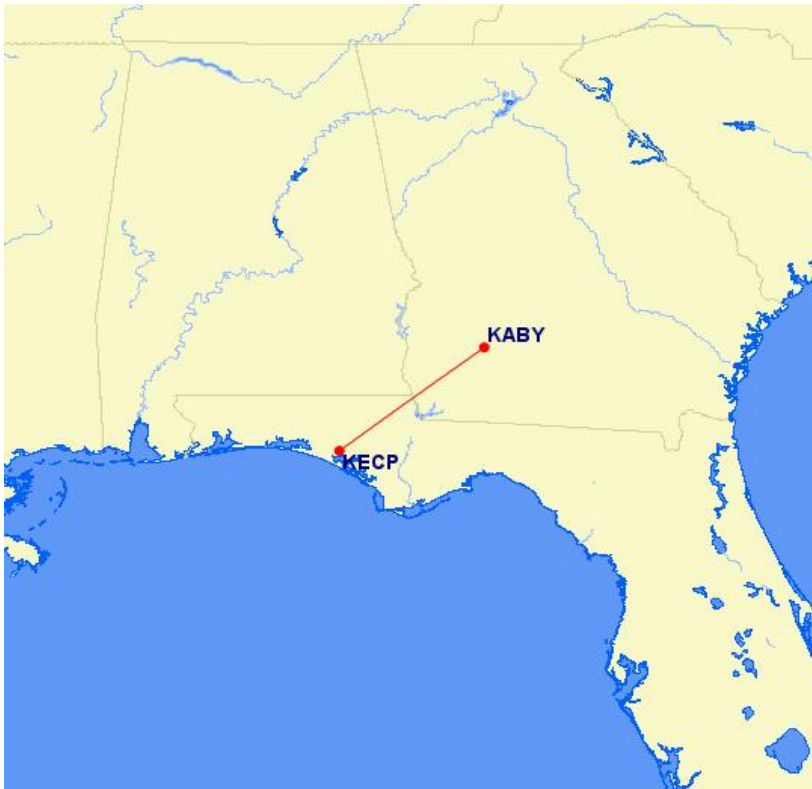
LOCATION:	RAMP NAME:	FREQUENCY:	NOTES:
ABY	CARGO RAMP	129.42	TOWER OPEN 0800-2000 LOCAL
ECP	CARGO RAMP		SOUTH OF AIRLINE TERM

RAMP NOTES:

ABY – Marshallers are available leaving ABY if you want them (they usually leave you to it); when you return, park yourself, and set the cones and chocks.

There are not any tie downs on the UPS ramp in ABY. There are tie downs on the FBO ramp (East of ECHO, North of CHARLIE)

ECP – Taxi in on echo 2 up to the building, make hard left 90 degree turn and stop (leaving the nose wheel turned, to make it easier to depart as it's a very tight cargo area) Park aircraft at Sheltair. Taxi to UPS ramp to load/unload.



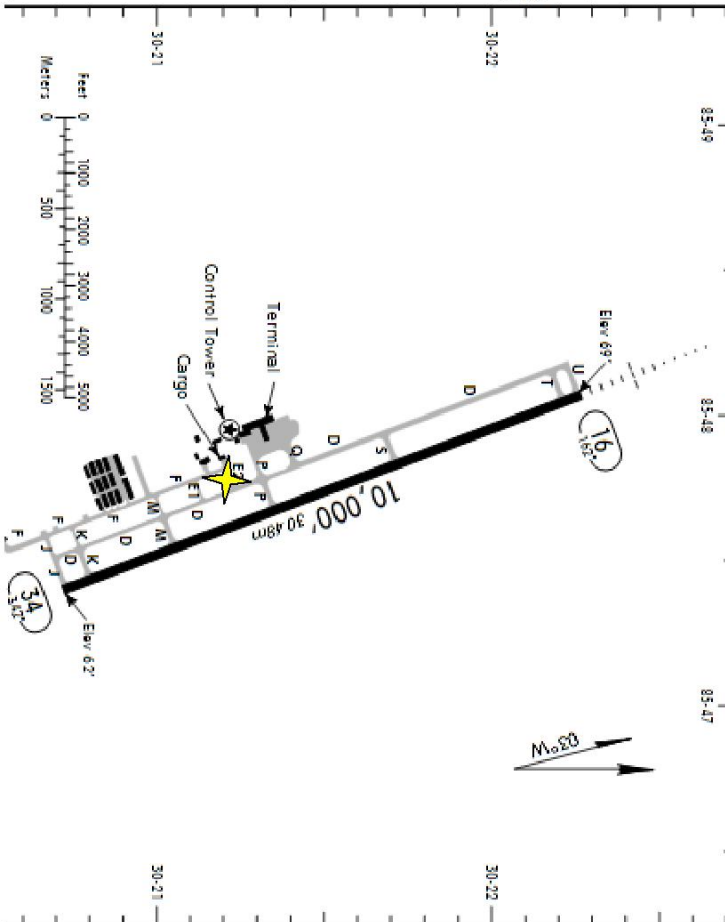
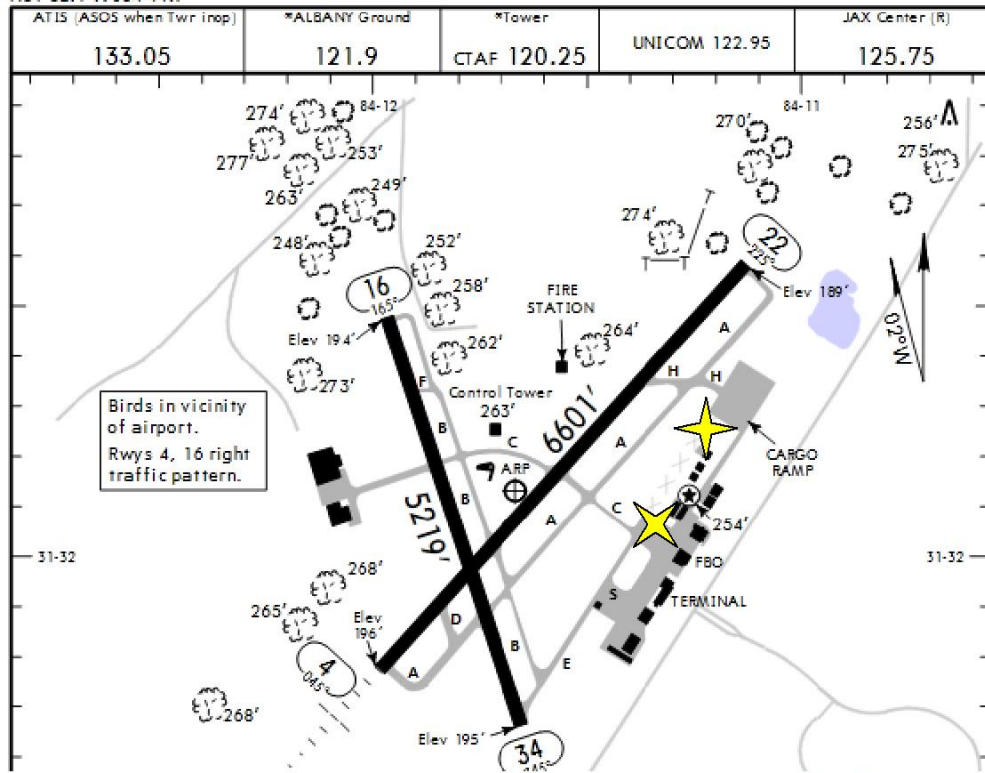
MARTINAIRE ROUTE DESCRIPTION

MRA 630

KABY/ABY
 Apt Elev 196'
 N31 32.1 W084 11.7

JEPESEN
 21 AUG 09
 Eff 27 Aug (11-1)

ALBANY, GA
 SOUTHWEST GEORGIA REG



KECP/ECP		JEPESEN		PANAMA CITY, FLA	
Apt Elev 69'		1 APR 11 (11-1)		NORTHWEST FLORIDA BEACHES INTL	
N30 21.5 W086 47.7		*PANAMA CITY Ground		*TINDALL Departure RT	
ATIS (ASOS when Twr Inop)		*Tower		Below 5000' Above 5000'	
119.97		CTAF 118.95		125.2	
85-49		85-48		85-47	
				JAX Center	
				120.82 when Dep Inop	