

# MARTINAIRE ROUTE DESCRIPTION

# MRA 630

UPDATED: 07/11/2022

ROUTE NUMBER/CUSTOMER: 630/UPS

ROUTE BASE: MON(PM) –SAT(AM)

DAYS OF OPERATION: MON (PM) – SAT (AM)

## ROUTE:

<b>LEG:</b>	<b>DAYS:</b>	<b>SCHEDULED TIMES:</b>	<b>PART 135:</b>	<b>PART 91:</b>
ECP-ABY	MON – FRI (PM)	20:05-2050 CT (21:05-21:50 ET)	✓	
ABY-ECP	TUE - SAT (AM)	05:35-06:15CT (6:35-07:15 ET)	✓	

## **IN POSITION TIME:**

PM: ECP (MON: FRI) 19:05 CT  
UPS#1366 TYPICAL ARRIVAL 0520 ET  
TYPICAL ARRIVAL OF FREIGHT 0600 ET (0540 FOR THE METRO)

<b>DESTINATION:</b>	<b>SUGG ALTERNATE:</b>
KABY	KMCN, KCSG
KECP	DHN

## ROUTE NOTES:

ABY TOWER CLOSED UNTIL 0800, CALL JAX CENTER 125.75 READY AT RUNWAY FOR IFR.

## CLEARANCE:

<b>LEG:</b>	<b>ROUTE:</b>	<b>ALTITUDE:</b>
ABY-ECP	DIRECT	6000
ECP-ABY	DIRECT	5000

CLEARANCE NOTES:

## FUEL:

<b>LOCATION:</b>	<b>FUEL REQUIRED</b>	<b>VENDOR:</b>	<b>FREQ:</b>
ABY	1200 – 1500 LBS	EAGLES OF AMERICA	129.80
ECP	AS REQUIRED	SHELTAIR	130.0

FUEL NOTES: \*\*ROUND TRIP FUEL FROM ABY PREFERRED \*\*

You will be fueled in the AM after you receive your final weight. If able, upload round trip fuel. If not, fuel is available in ECP. FBO Pedestrian Gate code in ABY is 1540. Gate M code 8732. Access to Car Parking and Pilots room."

## CONTACT NUMBERS:

CUSTOMER CONTACTS:

# MARTINAIRE ROUTE DESCRIPTION

# MRA 630

ABY UPS 229-888-8183  
ECP UPS (Driver) 850-896-7429

## WEATHER CONTACTS:

ABY ASOS 229-434-7494  
ECP AWOS 850-235-7857

## FBO CONTACTS:

ABY EAGLES OF AMERICA: 229-434-8787  
ECP SHELTAIR 850-233-4717 (After hours 10pm to 6am 850-630-9748)

## HOTEL CONTACTS:

ABY-Rent room from Eagles of America  
ABY ECP - Days Inn Beach 850-233-3333

## RAMP INFORMATION:

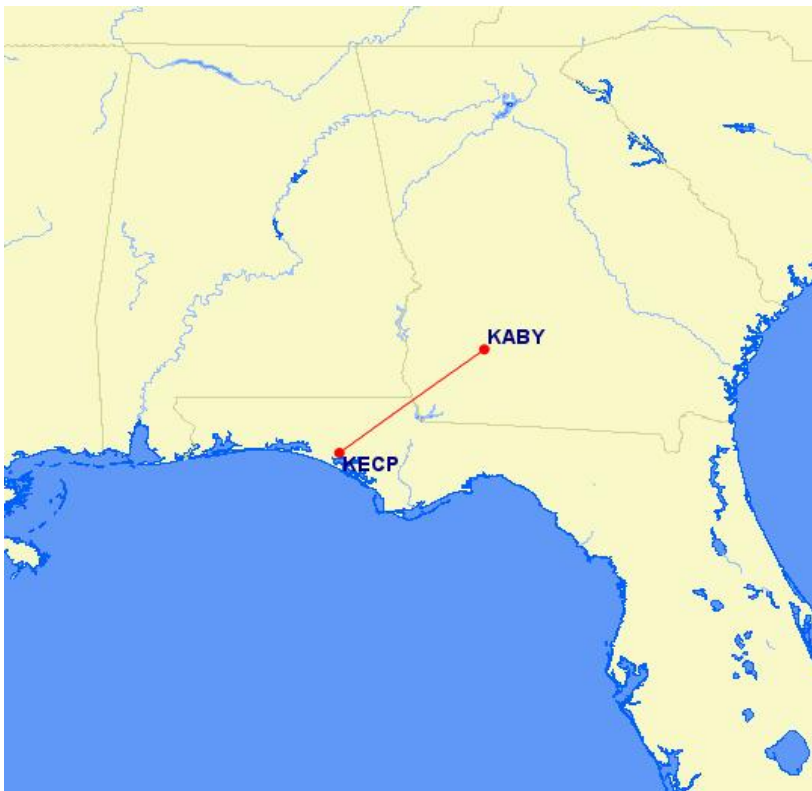
<b>LOCATION:</b>	<b>RAMP NAME:</b>	<b>FREQUENCY:</b>	<b>NOTES:</b>
ABY	CARGO RAMP	129.42	TOWER OPEN 0800-2000 LOCAL
ECP	CARGO RAMP		SOUTH OF AIRLINE TERM

## RAMP NOTES:

ABY – Marshallers are available leaving ABY if you want them (they usually leave you to it); when you return, park yourself, and set the cones and chocks.

There are not any tie downs on the UPS ramp in ABY. There are tie downs on the FBO ramp (East of ECHO, North of CHARLIE)

ECP – Taxi in on echo 2 up to the building, make hard left 90 degree turn and stop (leaving the nose wheel turned, to make it easier to depart as it's a very tight cargo area) Park aircraft at Sheltair. Taxi to UPS ramp to load/unload.



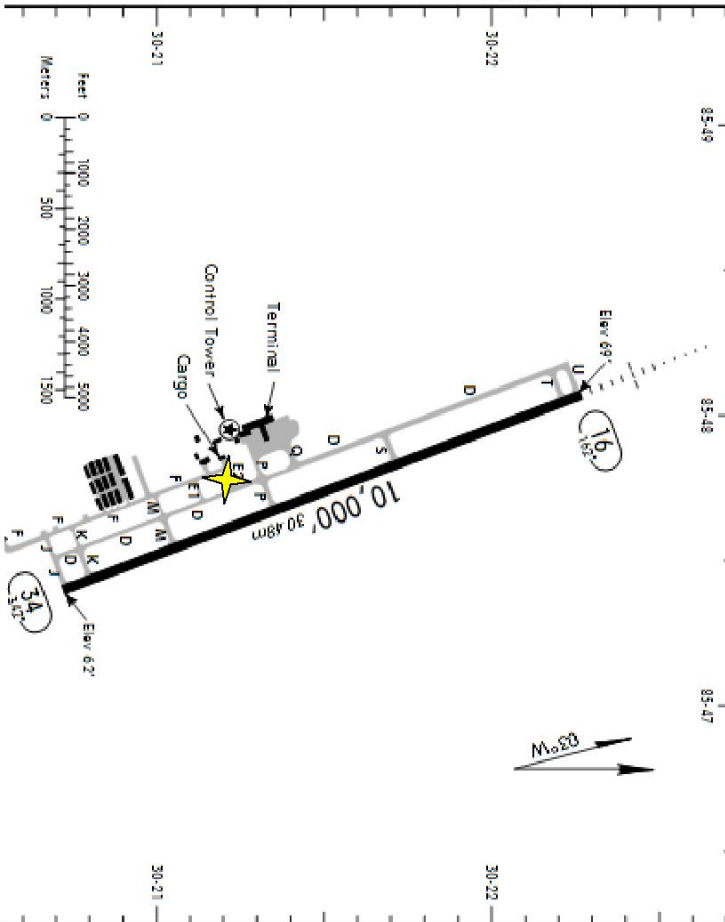
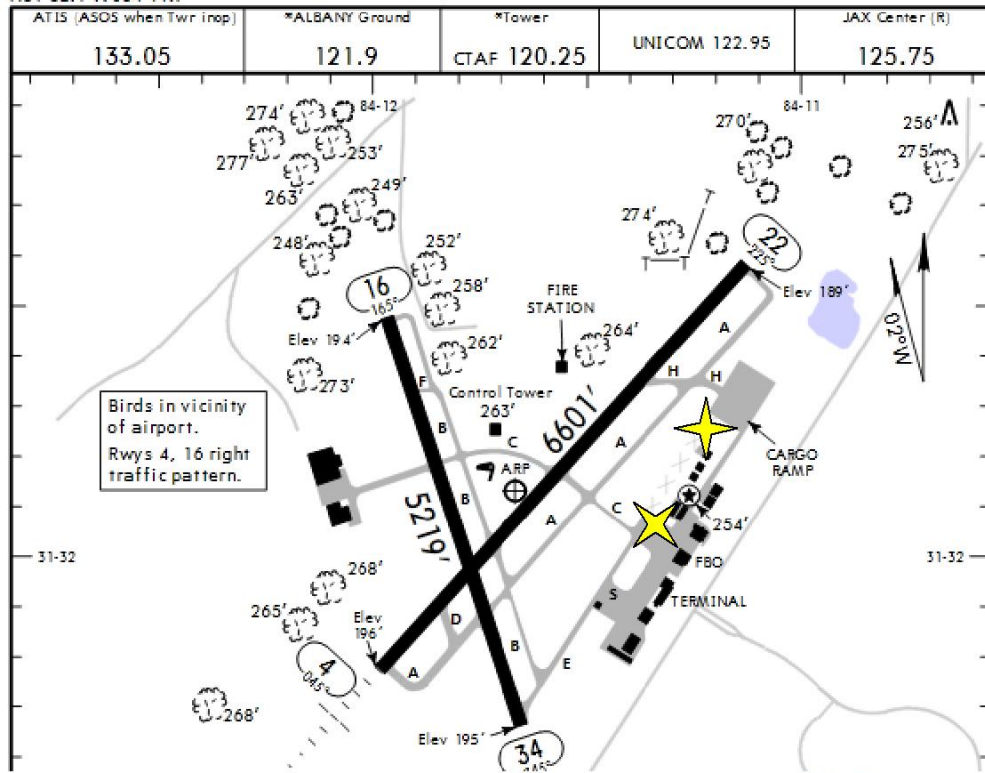
# MARTINAIRE ROUTE DESCRIPTION

# MRA 630

**KABY/ABY**  
 Apt Elev 196'  
 N31 32.1 W084 11.7

**JEPESEN**  
 21 AUG 09  
 Eff 27 Aug (11-1)

**ALBANY, GA**  
 SOUTHWEST GEORGIA REG



<b>KECP/ECP</b>		<b>JEPESEN</b>		<b>PANAMA CITY, FLA</b>	
Apt Elev 69'		1 APR 11 (11-1)		NORTHWEST FLORIDA BEACHES INTL	
N30 21.5 W086 47.7		*PANAMA CITY Ground		*TINDALL Departure RT	
ATIS (ASOS when Twr Inop)		*Tower		Below 5000' Above 5000'	
119.97		121.65		125.2	
85-49		85-48		85-47	
UNICOM 122.95		CTAF 118.95		JAX Center	
133.05		121.9		120.82 when Dep Inop	
125.75		120.25			