

MARTINAIRE ROUTE DESCRIPTION

MRA 658

UPDATED: 09/14/2021

ROUTE NUMBER/CUSTOMER: 658 / UPS
ROUTE DESCRIPTION: PSN-TYR-DFW-PSN
DAYS OF OPERATION: MONDAY (PM) THRU SATURDAY (AM)

ROUTE:

LEG:	DAYS:	SCHEDULED TIMES:	PART 135:	PART 91:
PSN-TYR	M-FRI	1915-1935 CT	<input checked="" type="checkbox"/>	
TYR-DFW	M-FRI	1955-2055 CT	<input checked="" type="checkbox"/>	
DFW-PSN	M-FRI	0630-0725 CT	<input checked="" type="checkbox"/>	
DFW-TYR	SAT (AM)	0700-0755 CT	<input checked="" type="checkbox"/>	
TYR-PSN	SAT (AM)	0815-0835 CT	<input checked="" type="checkbox"/>	

IN POSITION TIME:

PM: PSN M-FRI 1815 CENTRAL
AM: DFW TU-FRI 0530 CENTRAL
AM: DFW SAT (AM) 0600 CENTRAL

APPROX ARRIVAL TIME OF FREIGHT:
1900 CENTRAL PSN – 0620 CENTRAL DFW

DEST:	SUGG ALTERNATE:
KPSN	KTYR
KTYR	KPSN
KDFW	KADS

ROUTE NOTES:

CLEARANCE:

LEG:	ROUTE:	ALTITUDE:
PSN-TYR	DIRECT FZT DIRECT TYR	3000
TYR-DFW	DIRECT YEAGR - YEAGR4 ARRIVAL	6000
DFW-PSN	GARLAND 7 DEP - SOLD0 - UIM - DIRECT PSN	5000
DFW-TYR	GARLAND 7 DEP - CLARE - ROCKK - TYR - DIRECT TYR	7000
TYR-PSN	DIRECT FZT DIRECT PSN	3000

CLEARANCE NOTES:

If GPS Navigation is used

Center or approach will frequently give you direct HOWDY or YEAGR depending on flow. Saves ~10 minutes.

PSN- When WTX is IFR must call center @ 1-800-722-6208 because center not reachable on ground for clearance. Help Load.

FUEL:

LEG:	FUEL REQUIRED:	VENDOR:
PSN	800 LBS	CITY OF PALESTINE (903-723-0111) 122.70
DFW	800 LBS	SWISSPORT

FUEL LOAD TO START EACH RUN. NO ROUNDTRIP FUEL

*** FUEL SLIP IN WINDOW IN DFW***

Advise dispatch ASAP if additional fuel uplift is needed on either end due to WX. PSN FBO closes at 1700.

MARTINAIRE ROUTE DESCRIPTION

MRA 658

CONTACT NUMBERS:

CUSTOMER CONTACT NUMBERS

TYR	UPS	903-535-9176
PSN	UPS	800-754-8118
		903-723-0842
DFW	UPS	972-456-4816

FBO CONTACT NUMBERS

PSN	CITY OF PSN	903-723-0111
TYR	TYLER JET CENTER	903-597-1334

HOTEL CONTACT NUMBERS

PSN	BEST WESTERN	903-723-4655
DFW	MOTEL 6	972-870-0530

WEATHER CONTACT NUMBERS

PSN	AWOS	903-729-3641
TYR	ASOS	903-535-9105
DFW	ASOS	972-453-0992

RAMP NOTES: Before entering DFW UPS ramp, contact UPS Operations on 129.90 with flight number, tail number, time on, weight, percentage bulk, and fuel request for AM ops. Ops will clear you to the “west side”. For AM ops, before leaving UPS ramp, taxi to the northwest corner of the ramp and contact Ops on 129.90 with flight number and tail number.



MARTINAIRE ROUTE DESCRIPTION

MRA 658

KTYR/TYR

Apt Elev **544'**
N32 21.2 W095 24.1

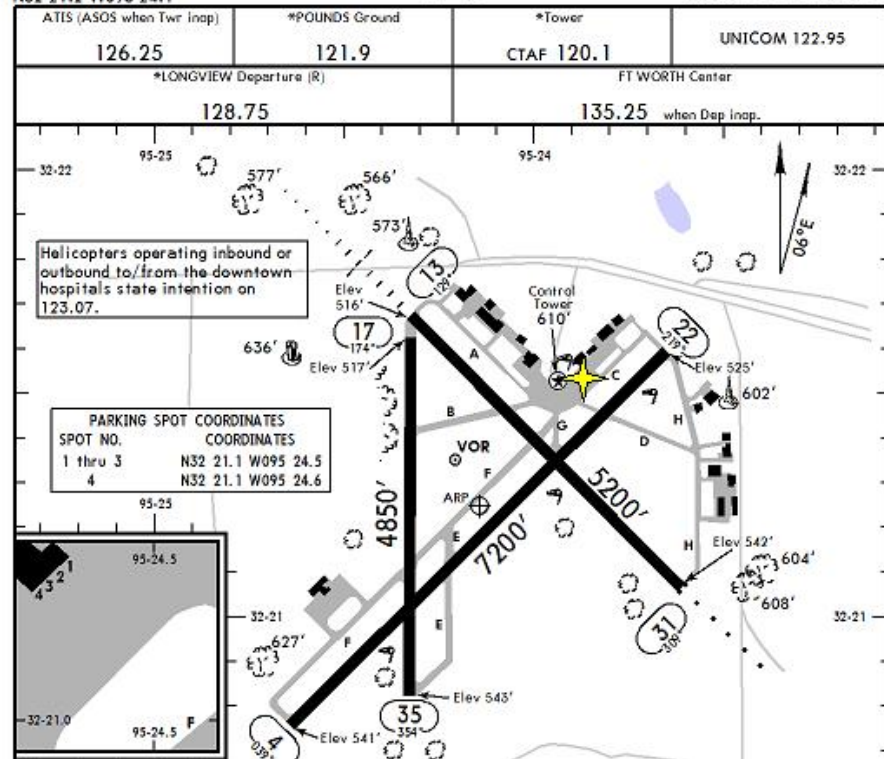
JEPPESEN

29 APR 11 (11-1) Eff 6 May

TYLER, TEXAS

TYLER POUNDS REGL

MRA Parking = 



KPSN/PSN

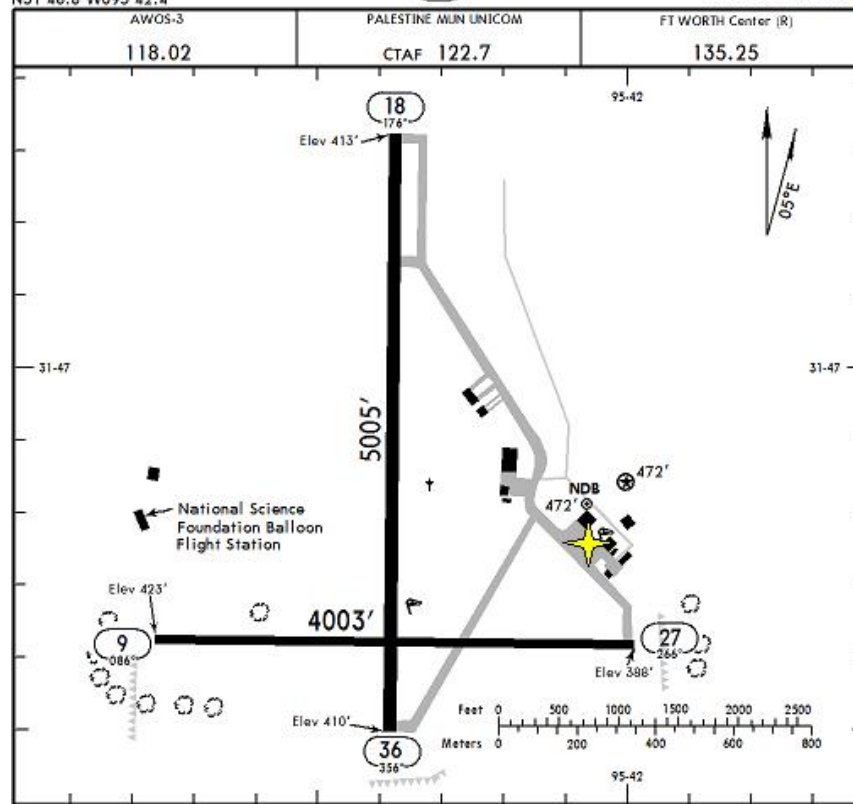
Apt Elev **423'**
N31 46.8 W095 42.4

JEPPESEN

18 SEP 09 (10-9)

PALESTINE, TEXAS

PALESTINE MUN



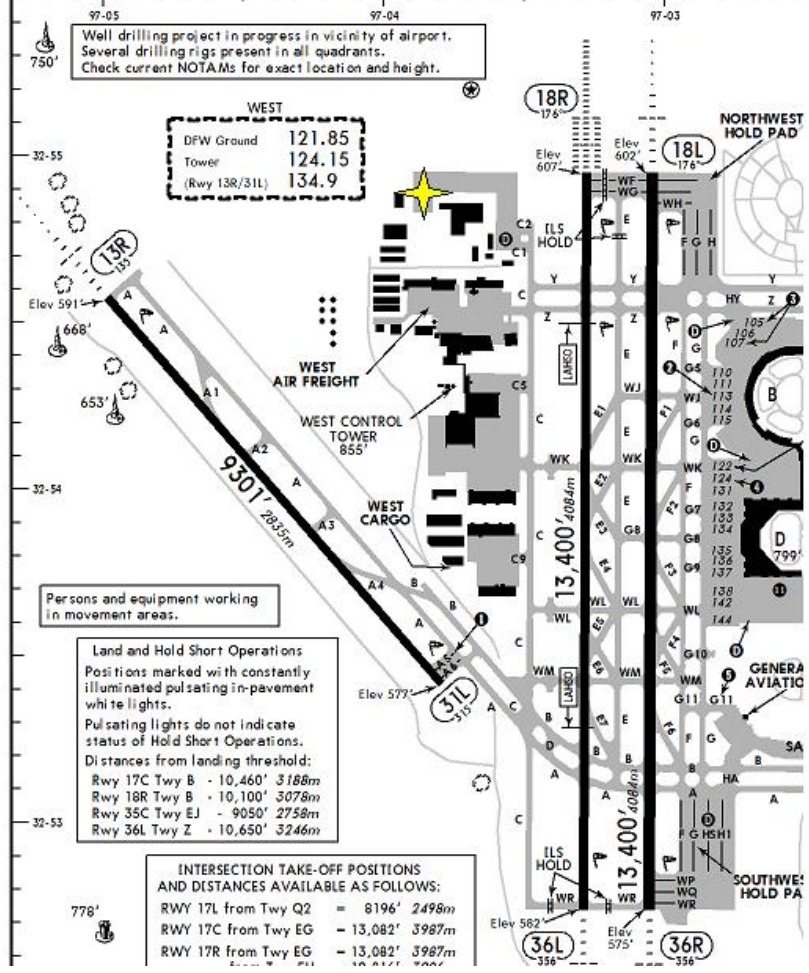
MARTINAIRE ROUTE DESCRIPTION

MRA 658

KDFW/DFW
Apt Elev 607'
N32 53.8 W097 02.3

JEPPesen
10 JUN 11 (60-9)

D-ATIS Departure	ACARS: D-ATIS PDC TWIP	DFW Clearance	DFW Ramp Tower	West	Ground	East
135.92		128.25	129.95	121.85	121.65	121.8
Tower				REGIONAL Departure (R)		
West	East	Rwys 13R/31L	Rwys 13L/31R & 17L/35R	North	South	West
124.15	126.55	134.9	127.5	124.82	125.12	126.47
				East		
				118.55		



Well drilling project in progress in vicinity of airport. Several drilling rigs present in all quadrants. Check current NOTAMS for exact location and height.

DFW Ground	121.85
Tower	124.15
(Rwy 13R/31L)	134.9

Persons and equipment working in movement areas.

Land and Hold Short Operations
Positions marked with constantly illuminated pulsating in-pavement white lights.
Pulsating lights do not indicate status of Hold Short Operations.
Distances from landing threshold:
Rwy 17C Twy B - 10,460' 3188m
Rwy 18R Twy B - 10,100' 3078m
Rwy 35C Twy EJ - 9050' 2758m
Rwy 36L Twy Z - 10,650' 3246m

INTERSECTION TAKE-OFF POSITIONS AND DISTANCES AVAILABLE AS FOLLOWS:	
RWY 17L from Twy Q2	= 8196' 2498m
RWY 17C from Twy EG	= 13,082' 3987m
RWY 17R from Twy EG	= 13,082' 3987m