

MARTINAIRE ROUTE DESCRIPTION UPS: MRA 636

UPDATED: 08/30/2019

ROUTE NUMBER/CUSTOMER: 636 / UPS
ROUTE: MON (PM) - FRI (AM) MQI-RDU-MQI
FRI (PM) - SAT (AM) MQI-EDE-RDU-EDE-MQI
DAYS OF OPERATION: MONDAY (PM) THRU SATURDAY (AM)

ROUTE:

| LEG: | DAYS: | SCHEDULED TIMES: | PART 135: | PART 91: |
|---------|----------|-----------------------------|-------------------------------------|----------|
| MQI-RDU | M-THUR | 1814-1924 CT (1914-2024 ET) | <input checked="" type="checkbox"/> | |
| RDU-MQI | TUE-FRI | 0545-0655 CT (0645-0755 ET) | <input checked="" type="checkbox"/> | |
| MQI-EDE | FRI (PM) | 1830-1850 CT (1930-1950 ET) | <input checked="" type="checkbox"/> | |
| EDE-RDU | FRI (PM) | 1915-2000 CT (2015-2100 ET) | <input checked="" type="checkbox"/> | |
| RDU-EDE | SAT (AM) | 0636-0721 CT (0736-0821 ET) | <input checked="" type="checkbox"/> | |
| EDE-MQI | SAT (AM) | 0752-0812 CT (0852-0912 ET) | <input checked="" type="checkbox"/> | |

IN POSITION TIME:

PM: MQI 1814 ET
IN POS 10 MIN EARLIER ON FRI
APPROX ARRIVAL TIME OF FREIGHT MQI 1820 (ET)

AM: RDU

0545 EST
CREW MEETS IN LOBBY OF HOTEL AT 515 (ET) FOR 530 SHUTTLE TO RDU
½ HOUR LATER ON SATURDAY

| DESTINATION: | SUGG ALTERNATE: |
|--------------|-----------------|
| KRDU | KGSO |
| KMQI | KECG |
| KEDE | KECG |

ROUTE NOTES:

SEE CLEARANCE NOTES BELOW ABOUT RESTRICTED AREA!

THE CODE TO THE PILOT LOUNGE ENTRANCE AT MQI IS 422. THE GATE CODE AT MQI 0523

THE BEST ALTERNATE FOR EDE AND MQI IS ECG

CLEARANCE DELIVERY ON GROUND AT MQI IS CHERRY POINT ON 124.72

CLEARANCE:

| LEG: | ROUTE: | ALTITUDE: |
|---------|-------------------------------|-----------|
| MQI-RDU | DIRECT RMACK DIRECT | 8000 |
| RDU-MQI | RALEIGH 7 DIRECT RMACK DIRECT | 9000 |
| MQI-EDE | DIRECT RMACK DIRECT | 4000 |
| EDE-RDU | DIRECT TYI DIRECT | 6000 |
| RDU-EDE | RALEIGH 7 DIRECT TYI DIRECT | 7000 |
| EDE-MQI | DIRECT RMACK DIRECT | 5000 |

CLEARANCE NOTES:

Use caution for restricted area between MQI and EDE. You CANNOT fly direct between the airports without hitting R5302. Flying on V189 will keep the pilot clear of the restricted areas. There are several restricted areas and MOAs around the MQI/EDE/ECG area. Use extra caution when performing non-scheduled routes.

MARTINAIRE ROUTE DESCRIPTION UPS: MRA 636

FUEL:

| LEG: | FUEL REQUIRED: | VENDOR: |
|----------------|-----------------------------|---------------------------------------|
| MQI-RDU | <i>NONE</i> | CITY FBO (252-475-5575) 122.80 |
| RDU-MQI | 1500 LBS (ROUNDTRIP) | LANDMARK (919-840-2200) 131.15 |
| EDE | AS NEEDED | CITY FBO (252-482-4664) 123.00 |

FUEL LOAD TO START RUNS EACH NIGHT ON THE UPS RAMP RDU.

FUEL NOTES:

RDU: After unloading completed in RDU, a fueling clipboard located in the office of the UPS building is required to be filled out EACH night before leaving for the hotel.

CONTACT NUMBERS:

CUSTOMER CONTACT NUMBERS

| | | |
|-----|-----|-------------------------------------|
| RDU | UPS | 919-840-0421 |
| MQI | UPS | 252-473-3080 (call in AM for truck) |

FBO CONTACT NUMBERS

| | | | | |
|-----|----------|--------------|---------------|--------------------|
| MQI | CITY FBO | 252-475-5575 | 122.80 | Lobby code is 1200 |
| RDU | LANDMARK | 919-840-2200 | 131.15 | |
| EDE | CITY FBO | 252-482-4664 | 123.00 | |

HOTEL CONTACT NUMBERS

| | | |
|-----|-------------------|--------------|
| RDU | EXTENDED STAY | 919-998-0400 |
| EDE | TRESTLE HOUSE INN | 252-482-2282 |
| MQI | ELIZABETHAN INN | 252 473 2101 |
| ECG | DAYS INN | 252-335-4316 |

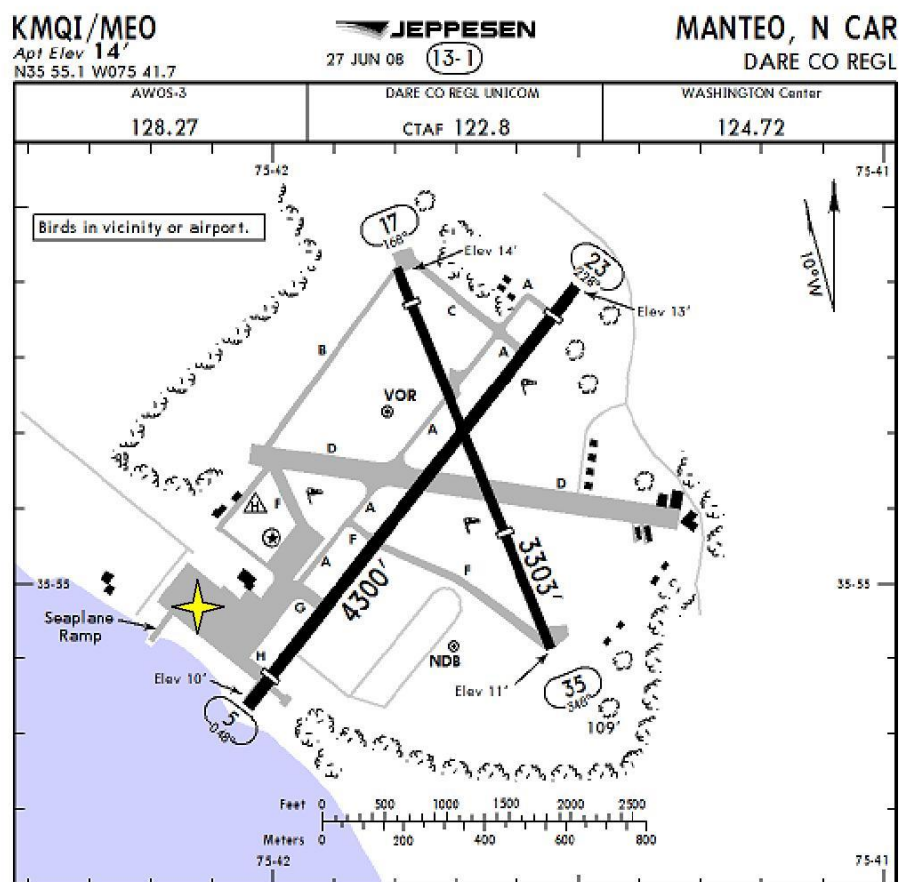
WEATHER CONTACT NUMBERS

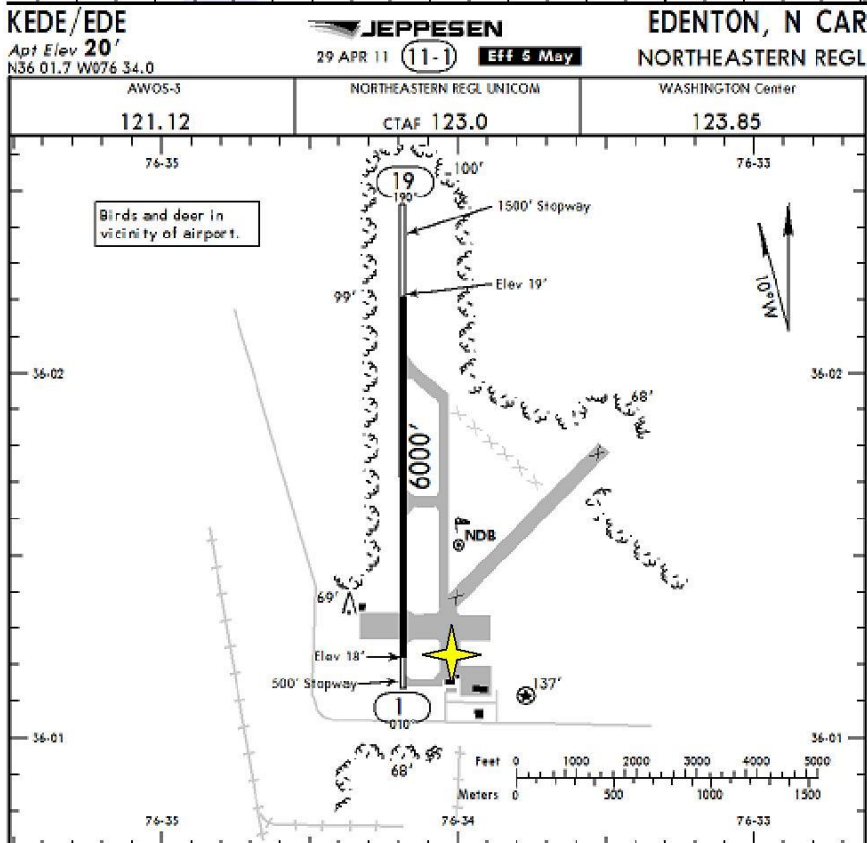
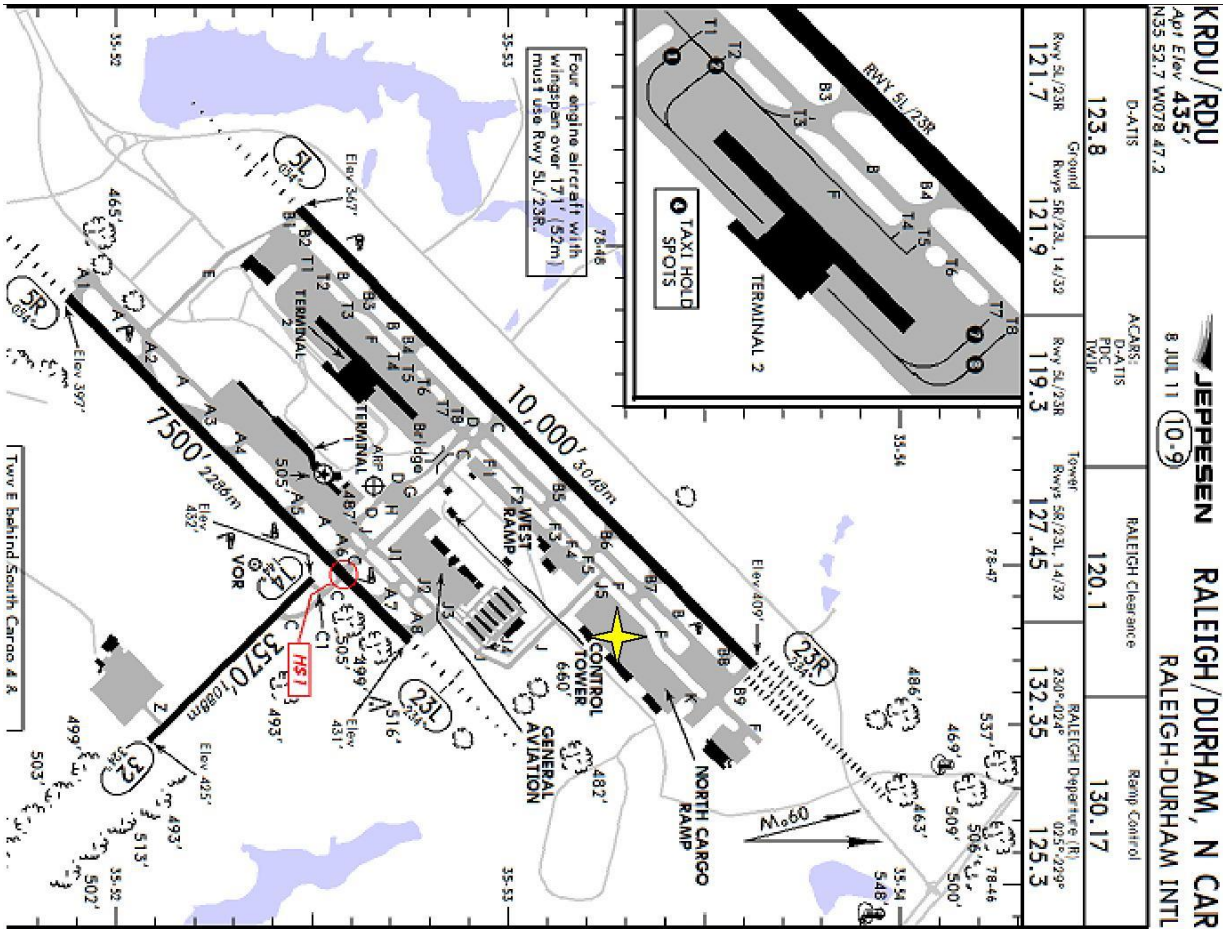
| | | |
|-----|------|--------------|
| MQI | ASOS | 252-473-2826 |
| EDE | ASOS | 252-482-0757 |
| RDU | ASOS | 919-840-0816 |

RAMP INFORMATION:

| LOCATION: | RAMP NAME: | FREQUENCY: | NOTES: |
|------------------|-------------------|-------------------|-------------------------|
| MQI | <i>SW OF FBO</i> | <i>122.80</i> | PARK BETWEEN CONES |
| RDU | <i>UPS RAMP</i> | <i>129.425</i> | MARSHALLERS WILL DIRECT |
| EDE | <i>GA RAMP</i> | <i>123.0</i> | SEE A/P DIAGRAM BELOW |

MARTINAIRE ROUTE DESCRIPTION UPS: MRA 636



MARTINAIRE ROUTE DESCRIPTION UPS: MRA 636

MRA Parking =