

# MARTINAIRE ROUTE DESCRIPTION

# MRA 703

UPDATED: 5/6/19

ROUTE NUMBER/CUSTOMER: 703/UPS

ROUTE BASE: EDE-RDU-EDE

DAYS OF OPERATION: MON (PM) – FRI (AM)

## ROUTE:

LEG:	DAYS:	SCHEDULED TIMES:	PART 135:	PART 91:
EDE-RDU	M-THU	1820-1905 CENTRAL (1920-2005 EASTERN)	<input checked="" type="checkbox"/>	
RDU-EDE	TUE-FRI	0545-0630 CENTRAL (0645-0730 EASTERN)	<input checked="" type="checkbox"/>	

## IN POSITION TIME:

PM: EDE 1720 CENTRAL 1820 EASTERN

AM: RDU 0445 CENTRAL 0545 EASTERN

DESTINATION:	SUGG ALTERNATE:
KEDE	KECG
KRDU	KGSO

## ROUTE NOTES:

BEST ALT FOR EDE IS ECG. IF NOT TO RDU BEFORE 2130 UPS WILL MOST LIKELY SEND YOU TO GSO.

## CLEARANCE:

LEG:	ROUTE:	ALTITUDE:
EDE-RDU	DIRECT TYI-DIRECT RDU	6000
RDU-EDE	DIRECT TYI-DIRECT EDE	5000

## CLEARANCE NOTES:

For IFR clearance out of EDE the number is 1 888 766 8267

FOR EDE-RDU, REQUEST IFR CLEARANCE FROM WASHINGTON CENTER ABOVE

2500' MSL ON 123.85, OR IF UNABLE TO DEPART VFR, BY PHONE FROM RALEIGH FSS

## FUEL:

LOCATION:	FUEL REQUIRED	VENDOR:	FREQ:
EDE	NONE	EDENTON AV SER (252-482-4664)	123.00
RDU	1200 LBS	SIGNATURE (919-840-2200)	131.15

## FUEL NOTES:

\*\*\* ROUND TRIP FUEL REQUIRED\*\*\* FUEL EACH NIGHT IN KRDU

. REQUEST FUEL AT RDU BY WRITING AMOUNT REQUESTED ON CLIPBOARD LOCATED IN OPS ON DRY ERASE BOARD

## CONTACT NUMBERS

### FBO CONTACT NUMBERS

RDU LANDMARK AVIATION 919-840-2200 129.65  
EDE EDENTON AV SERVICES 252-484-2200 123.00

### HOTEL CONTACT NUMBERS

RDU EXTENDED STAY 919-998-0400

### WEATHER CONTACT NUMBERS

# MARTINAIRE ROUTE DESCRIPTION

# MRA 703

EDE ASOS: 252-482-0757  
RDU: 919-840-0816

## UPS CONTACT FREQUENCIES

UNIVERSAL: 129.42 INBOUND RDU (10 MINUTES OUT)

## RAMP INFORMATION:

<b>LOCATION:</b>	<b>RAMP NAME:</b>	<b>FREQUENCY:</b>	<b>NOTES:</b>
EDE	EDE AV SER	123.00	GA RAMP
RDU	UPS CARGO	129.42	MARSHALLERS WILL DIRECT

## RAMP NOTES:



# MARTINAIRE ROUTE DESCRIPTION

# MRA 703

KEDE/EDE

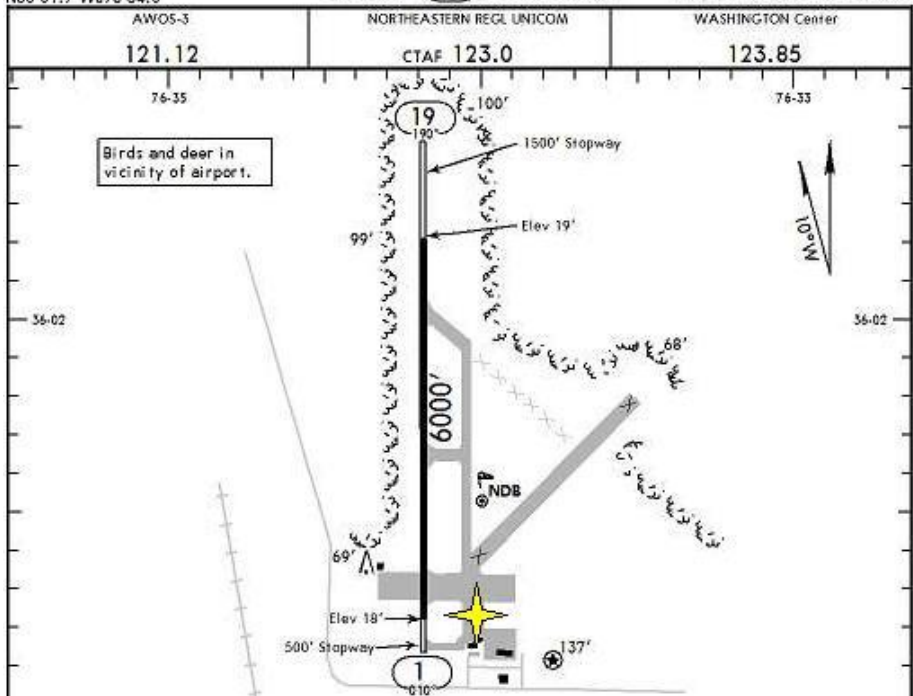
Apt Elev 20'  
N36 01.7 W076 34.0

JEPPESEN

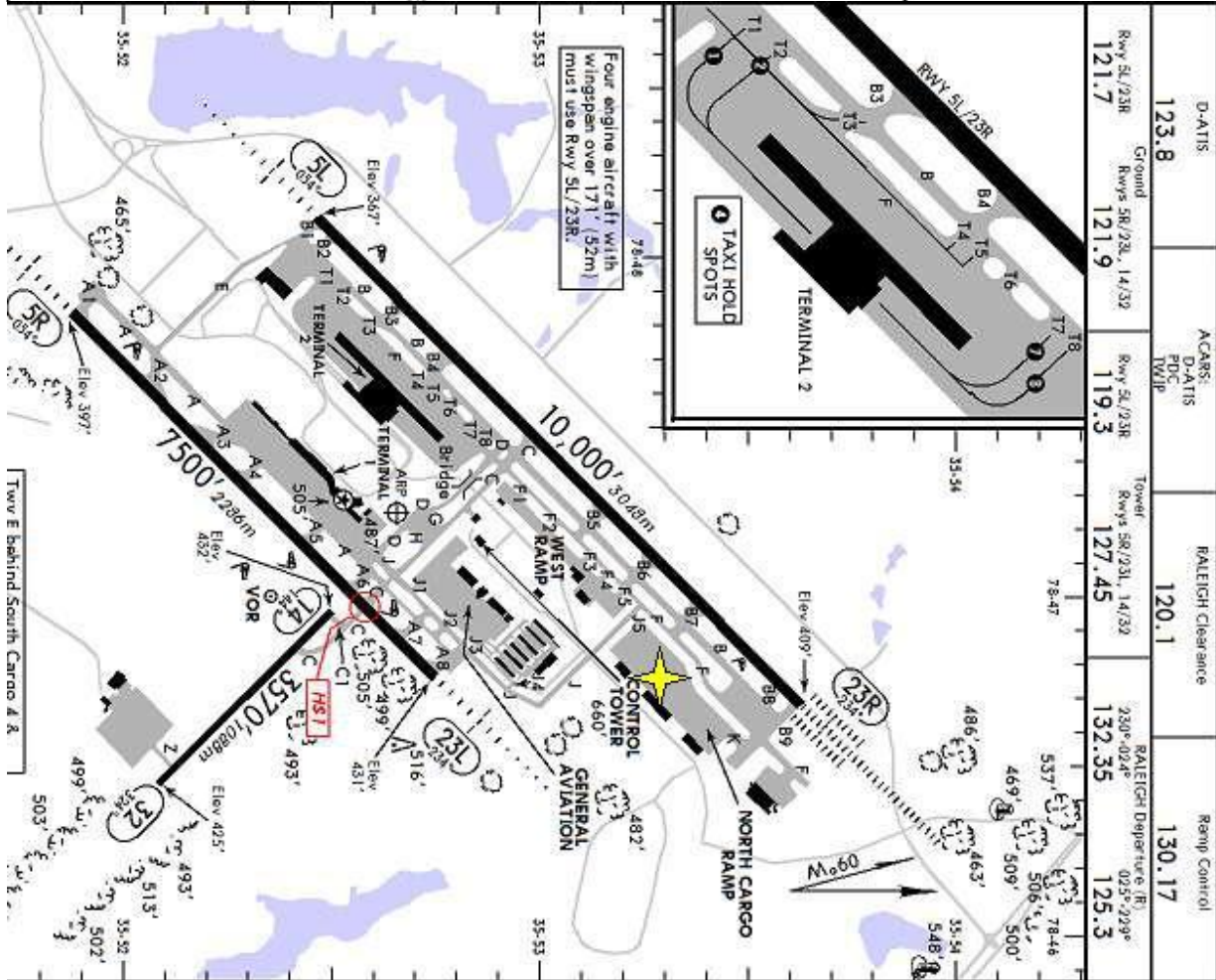
29 APR 11 (11-1) Eff 5 May

EDENTON, N CAR

NORTHEASTERN REGL



MRA Parking =



<b>KRDU/RDU</b>		<b>RALEIGH/DURHAM, N CAR</b>	
Apt Elev 435'		8 JUL 11 (10-9)	
N35 52.7 W078 47.2		<b>JEPPESEN</b>	
D-ATIS		RALEIGH Clearane	
123.8	Ground	RALEIGH Clearance	Ramp Control
121.7	Rwy SL/23R	120.1	130.17
121.9	Rwys 5R/23L, 14/32	127.45	125.3
119.3	Rwy SL/93R	132.35	125.3
	Tower	RALEIGH Departure (R)	
	Rwys 5R/23L, 14/32	230°-024°	025°-299°
	PDC		
	TWIP		