

MARTINAIRE ROUTE DESCRIPTION MRA 697

UPDATED: 01/22/2019

ROUTE NUMBER/CUSTOMER: 697/UPS
ROUTE BASE: MON (PM) – SAT (AM) AVP-MDT-AVP
DAYS OF OPERATION: MON (PM) – SAT (AM)

ROUTE:

LEG:	UPS FLIGHT #	DAYS:	SCHEDULED TIMES:	PART 135:	PART 91:
AVP-MDT	MA1275	MO - FRI (PM)	1900-1945 CT (2000-2045 ET)	<input checked="" type="checkbox"/>	
MDT-AVP	MA1274	TUE- FRI (AM)	0600-0645 CT (0700-0745 ET)	<input checked="" type="checkbox"/>	
MDT-AVP	MA1274	SAT (AM)	0645-0725 CT (0745-0825 ET)	<input checked="" type="checkbox"/>	

IN POSITION TIME:

PM: AVP (MON-FRI) 1900 ET
AM: MDT (TUE-FRI) 0530 ET
Take 0530 shuttle to airport
AM: MDT (SAT) 0600 ET
Take 0530 shuttle to airport

DESTINATION:	SUGG ALTERNATE:
KMDT	KBWI
KAVP	ASK UPS

APPROX ARRIVAL TIME OF FREIGHT:
1945 ET AVP – 0600 ET MDT

ROUTE NOTES: Friday night outbound will normally be empty. UPS will call pilot or Martinaire dispatch by 1930 ET if there is no outbound volume. You can track am UPS flight on Flight Aware with UPS1172

CLEARANCE:

LEG:	ROUTE:	ALTITUDE:
AVP-MDT	AVP-DIANO-GAAPP-HAR-MDT	6000
MDT-AVP	DIRECT	7000

CLEARANCE NOTES: AVP – MDT: Plan on Scranton 7 Departure, Direct DIANO-GAAPP to MDT

FUEL:

LOCATION:	FUEL REQUIRED	VENDOR:	FREQ:
AVP	AS REQUIRED	AVIATION TECHNOLOGIES	122.95
MDT	UPLIFT TO 1000 LBS	AVFLIGHT	122.95

FUEL NOTES: Call Avflight via frequency before you shutdown with Tail number and uplift amount (w/ prist)

CONTACT NUMBERS:

CUSTOMER CONTACTS:
AVP UPS 570-883-9331
MDT UPS 717-944-2816

MARTINAIRE ROUTE DESCRIPTION MRA 697

FBO CONTACT NUMBERS:

AVP	AVIATION TECHNOLOGIES	570-457-4485	122.95
MDT	AVFLIGHT	717-944-4666	122.95

WEATHER CONTACTS:

AVP ASOS	570-457-3111
MDT ASOS	717-944-1372

HOTEL CONTACTS:

MDT Sheraton	717-558-9500
AVP Comfort Inn and Suites	570-347-1551

RAMP INFORMATION:

LOCATION:	RAMP NAME:	FREQUENCY:	NOTES:
AVP	CARGO RAMP	N/A	PARK AS DIRECTED
MDT	UPS RAMP	129.42	CALL 10 MIN OUT – MARSHALLERS WILL DIRECT

RAMP NOTES:

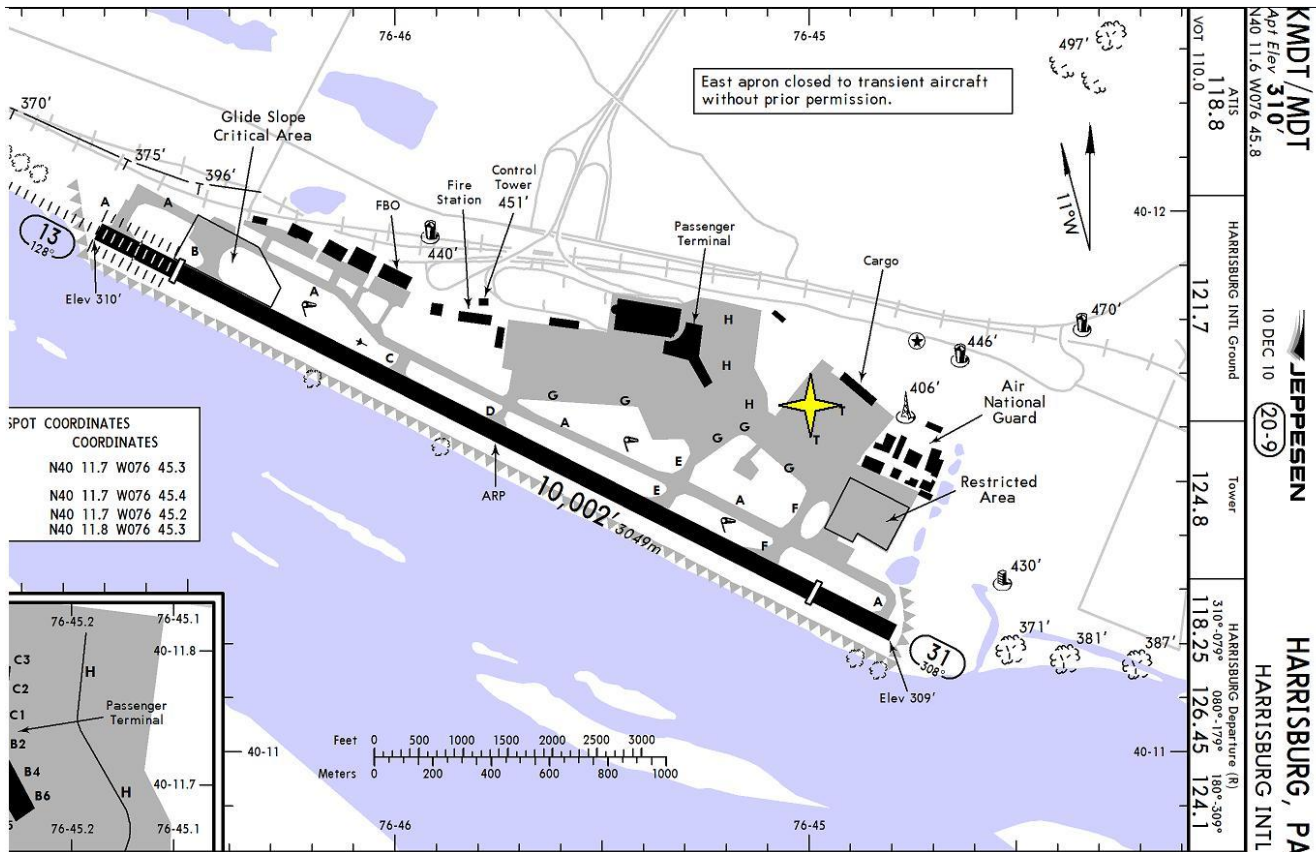
AVP: Pilot must have an ID from AVP to access cargo ramp. [If you do not have an ID badge]<Go to FBO, they will have to escort you to and from the cargo ramp, and supervise you until UPS arrives. Plan on arriving at aircraft around 1930.>

There are no facilities available on the cargo ramp. UPS will bring cones with them during the AM and PM operations.

MDT: Call UPS ops 129.42 10-15 minutes out. Give them ETE so they will have personnel standing by.



MARTINAIRE ROUTE DESCRIPTION MRA 697



KAVP/AVP

Apt Elev 962'
N41 20.3 W075 43.4

JEPPESSEN
23 DEC 11 (10-9)

WILKES-BARRE/SCRANTON, PA

WILKES-BARRE/SCRANTON INTL

MRA Parking =

