

MARTINAIRE ROUTE DESCRIPTION

MRA 682

UPDATED: 09/25/2018

ROUTE NUMBER/ 682 / UPS
 CUSTOMER: ROUTE M (PM) THUR (PM) ILM-RDU *** SEE NOTES***
 DESCRIPTION: M-THUR ILM-OAJ-RDU *** CONTRACTED***
 TUE-FRI RDU-OAJ-ILM *** CONTRACTED***
 MONDAY (PM) THRU SATURDAY (AM)

DAYS OF OPERATION:

ROUTE:

LEG:	DAYS:	SCHEDULED TIMES:	PART 135:	PART 91:
ILM-OAJ	MON-THUR (PM)	1747-1816 CT (1847-1916 ET)	<input checked="" type="checkbox"/>	
OAJ-RDU	MON-THUR (PM)	1835-1920 CT (1935-2020 ET)	<input checked="" type="checkbox"/>	
RDU-EWN	TUE-FRI(AM)	0545-0630 CT (0645-0730 ET)	<input checked="" type="checkbox"/>	
EWN-ILM	TUE-FRI(AM)	0645-0730 CT (0745-0830 ET)	<input checked="" type="checkbox"/>	

IN POSITION TIME:

PM: ILM M-THU 1645 CENTRAL (1747 EASTERN)
 APPROX ARRIVAL TIME OF FREIGHT ILM – 1835 EASTERN
 AM: RDU TU-FRI 0445 CENTRAL (0545 EASTERN)
 Meet in lobby of extended stay hotel at 515 AM ET for a 530 Shuttle To UPS.

DESTINATION:	SUGG ALTERNATE:
KRDU	KGSO
KEWN	KMRH
KOAJ	???
KILM	???

ROUTE NOTES:

The route now goes ILM-OAJ-RDU every evening and RDU-EWN-ILM every morning. Sometimes it also goes to OAJ in the morning. If that's the case it will be RDU-EWN(drop freight and go)-OAJ-ILM. Most freight comes from OAJ at night so keep that in mind when loading plane in ILM.

Park in front of the FBO at OAJ. If UPS is not waiting on the ramp for you may have to open the gate for the driver. The gate is ^{on} the right side of the FBO. To open the gate lift up the panel on the metal box next to the gate and press the "open" button.

Depart as soon as loaded. This has to be a quick turn. If not off by 1945 you won't make it RDU in time and will have to divert to GSO.

If eta is after 1915 make sure you call ups on 129.42 once in range to see if they want you to land at RDU or go on to GSO.

In the morning flight plan is Raleigh 7 departure v45 EWN. You will be taking the extra freight that won't fit on the first New Bern plane as well as any Wilmington freight.

UPS RDU jet cutoff time is 2015 local. If you cannot make RDU by 2015 local, you must go to GSO.

MARTINAIRE ROUTE DESCRIPTION

MRA 682

CLEARANCE:

LEG:	ROUTE:	ALTITUDE:
ILM-RDU	DIRECT	8000
ILM-OAJ	ILM-GOLLA	2100
OAJ-RDU	DIRECT RDU	6000
RDU-EWN	RDU7.EWN	7000
EWN-OAJ	RDU7.OAJ	5000
EWN-ILM	V139	3000
OAJ-ILM	VECTORS DIRECT	3000

CLEARANCE NOTES:

Jacksonville is called "Albert Ellis" when reporting your position. Be on the lookout for military Osprey's in the pattern. They sometimes don't announce their position.

FUEL:

LEG:	FUEL REQUIRED:	VENDOR:
ILM	AS REQUIRED	AIR WILMINGTON (910-763-0146)
OAJ	AS REQUIRED	JACKSONVILLE FS (910-324-2500) 123.00
RDU	1400 LBS (ROUND TRIP)	LANDMARK (919-840-2200) 131.15
EWN	AS REQUIRED	TIDEWATER AV (252-633-1400) 129.65

FUEL LOAD TO START RUNS EACH NIGHT IN RDU. ROUNDTRIP FUEL TAKES ABOUT 350 LBS TO GO ILM OAJ RDU

FUEL NOTES:

Once in RDU, inside the UPS building in the dispatch office there is clipboard that is required to fill out with fuel desired. Do not forget to do this.

CONTACT NUMBERS:

OAJ UPS 910-353-0377
RDU UPS 919-840-0421
ILM UPS 919

FBO CONTACT NUMBERS

OAJ JACKSONVILLE FLYING SERVICE 910-324-2500
RDU LANDMARK 919-840-2200
ILM AIR WILMINGTON 910-763-0146

HOTEL CONTACT NUMBERS

OAJ BEST WESTERN COURTYARD 910-455-4100
RDU WINGATE 919-941-2854

WEATHER CONTACT NUMBERS

OAJ ASOS 910-324-5233
RDU ASOS 919-840-0816

RAMP INFORMATION:

LOCATION:	RAMP NAME:	FREQUENCY:	NOTES:
ILM	AERO SERVICE N	122.95	AS DIRECTED
OAJ	GA RAMP	123.00	
RDU	UPS CARGO	129.42	MARSHALLERS WILL DIRECT
EWN	TIDEWATER RAMP	129.65	EAST RAMP

RAMP NOTES:

When parking at RDU ground crew will Marshall you in but they stand off to the left of where they actually want you to park. Keep your nose wheel on the line in the concrete. You'll understand once you see it.

Park at air Wilmington ramp. The Line crew will Marshall you in. You will park to the right of the FBO in the spot closest to the parking lot



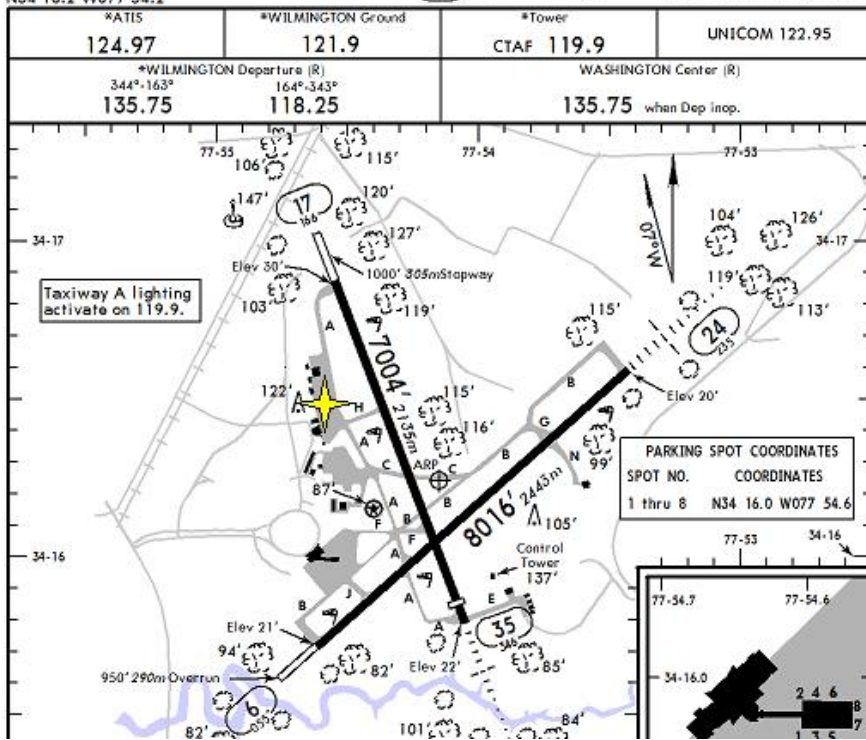
MARTINAIRE ROUTE DESCRIPTION

MRA 682

KILM/ILM
Apt Elev 32'
N34 16.2 W077 54.2

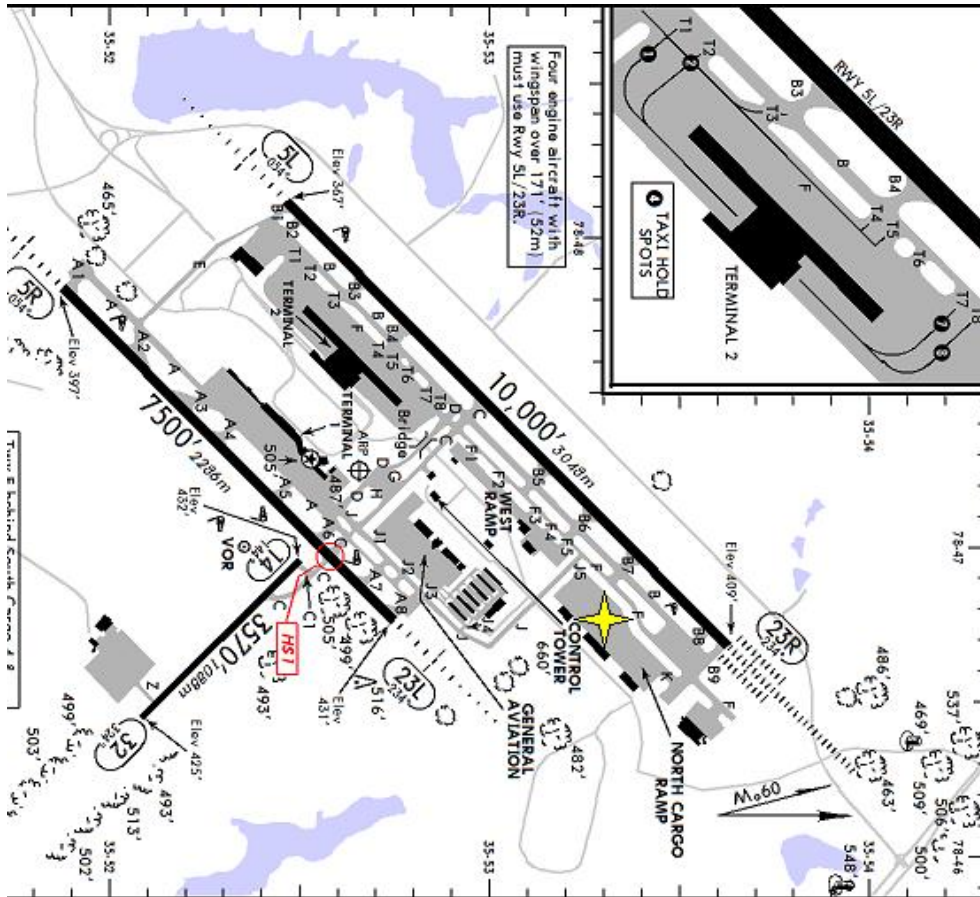
JEPPesen
29 APR 11 **11-1** Eff 5 May

WILMINGTON, N CAR
WILMINGTON INTL



MRA Parking = 

SPOT NO.	COORDINATES
1 thru 8	N34 16.0 W077 54.6



Runway	Ground	ACARS	RALEIGH Clearance	Ramp Control
Rwy 5L/28R	123.8	D-A-TIS	120.1	130.17
Rwys 5R/28L, 14/32	121.7	D-A-TIS	127.45	125.3
Rwy 5L/23R	119.3	D-A-TIS	127.45	125.3
Rwys 5R/23L, 14/32	121.7	D-A-TIS	127.45	125.3

KRDU/RDU
Apt Elev 435'
N35 52.7 W078 47.2

JEPPesen
8 JUL 11 **10-9**

RALEIGH/DURHAM, N CAR
RALEIGH-DURHAM INTL

MARTINAIRE ROUTE DESCRIPTION

MRA 682

KOAJ/OAJ

Apt Elev 94'
N34 49.7 W077 36.7

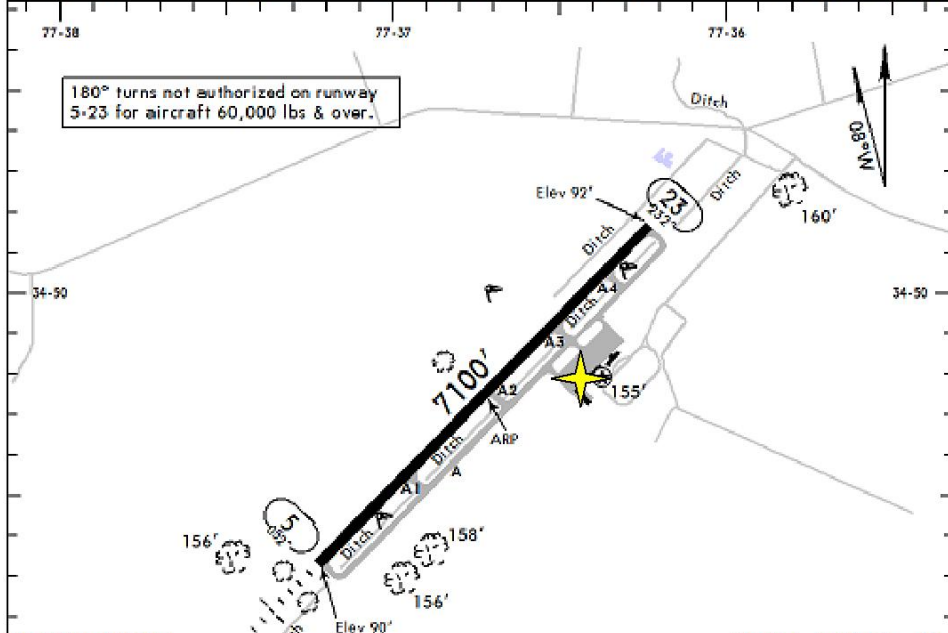
JEPPESEN

JACKSONVILLE, N CAR

1 MAY 09 (11-1) Eff 7 May

ELLIS

AWOS-3	WILMINGTON Clearance	ELLIS UNICOM	*WILMINGTON Departure (R)	WASHINGTON Center (R)
124.47	121.4	CTAF 123.0	135.75	124.02 when Dep inop.



KEWN/EWN

Apt Elev 19'
N35 04.4 W077 02.6

JEPPESEN

NEW BERN, N CAR

COASTAL CAROLINA REG

29 MAY 09 (11-1)

ASOS	CHERRY POINT Clearance	*NEW BERN Ground	*Tower	CHERRY POINT Departure (R)
118.52	120.52	121.7	CTAF 124.25	119.35

