

MARTINAIRE ROUTE DESCRIPTION

MRA 687

UPDATED: 06/14/2017

ROUTE NUMBER/CUSTOMER: 687 / UPS
ROUTE DESCRIPTION: OAK-UKI-STS
DAYS OF OPERATION: MONDAY (AM) THRU FRIDAY (PM)

ROUTE:

LEG:	DAYS:	SCHEDULED TIMES:	PART 135:	PART 91:
OAK-UKI	MO -FRI	0812-0900 CENTRAL(0612-0700 PACIFIC)	<input checked="" type="checkbox"/>	
UKI-STS	MO-FRI	1915-1945 CENTRAL(1715-1745 PACIFIC)	<input checked="" type="checkbox"/>	
STS-OAK	MO-FRI	2005-2045 CENTRAL(1805-1845 PACIFIC)	<input checked="" type="checkbox"/>	

IN POSITION TIME:

PM: UKI 1830 CENTRAL 1630 PACIFIC
AM: OAK 0800 CENTRAL 0600 PACIFIC
IN POS @UPS: 0600 PT (MON) 0600 PACIFIC (T-F)

DESTINATION:	SUGG ALTERNATE:
KOAK	???
KUKI	102, O60, STS
KSTS	OAK

ROUTE NOTES:

Ukiah is in a valley surrounded by mountains. The best approach is a LOC, which still only gets you down to 2400 feet
UKI gate code is #2855

CLEARANCE:

LEG:	ROUTE:	ALTITUDE:
OAK-UKI	OAK ENI KEARN	6,000
UKI-STS	ENI STS	5,000
STS-OAK	OAK	5,000

FUEL:

LEG:	FUEL REQUIRED:	VENDOR:
OAK	1200-1400	SWISSPORT
UKI	AS REQUIRED	CITY OF UKIAH (707-467-2817) 123.00
STS	AS REQUIRED	SONOMA JET (707-523-2800) 131.375

FUEL NOTES:

*** ROUNDTRIP FUEL FROM OAK. FUEL AS REQUIRED AT OUT STATIONS ***

CONTACT NUMBERS:

CUSTOMER CONTACT NUMBERS

OAK UPS 510-633-6925 510-633-6931
OAK UPS FEEDER INFO 510-633-6933
UKI UPS 707-462-7444
STS UPS 707-579-4632 707-579-9539

MARTINAIRE ROUTE DESCRIPTION

MRA 687

FBO CONTACT NUMBERS

OAK	KAISER AIR	800-511-2625	
UKI	CITY OF UKIAH	707-467-2817	707-272-5515
STS	APEX	707-528-7400	
STS	DRAGONFLY	707-575-8750	



HOTEL CONTACT NUMBERS

OAK	HOLIDAY INN	510-638-7700
UKI	COMFORT SUITES	707-462-3442
STS	HOLIDAY INN	707-829-6677

WEATHER CONTACT NUMBERS

OAK	ASOS	510-383-9514
UKI	ASOS	707-462-7343
STS	ASOS	707-573-8393

RAMP INFORMATION:

LOCATION:	RAMP NAME:	FREQUENCY:	NOTES:
KOAK	UPS RAMP	122.95	KAISER AIR
KUKI		129.425	NORTH RAMP (FACE EAST)
KSTS	DRAGON FLY AV	122.95	BACK CORNER NEAR SHADE HANGAR

RAMP NOTES:

Typically OAK will launch and land you off the north complex (9L/27R and 9R/27L). Taxi south across the bridge, make a left passing FedEx, and the UPS Feeder ramp is immediately off your left. The aircraft is left on the Kaiser Air ramp. You can park on the open part of the ramp (next to the other MRA airplane), and Kaiser will repo the airplane as necessary.

The airport diagram below for UKI is out of date. There is now a small ramp north of the previous ramps just used for us and two helicopters (the "star" on the diagram is correct). You will see cones and a fuel slop bucket. To get to the hotel in UKI, walk out the fence, around the north side of the airport to the east side, then cross the street. Occasionally you can cut back through the city vehicle maintenance yard onto the airport property. Usually UPS will give you a ride in the AM.

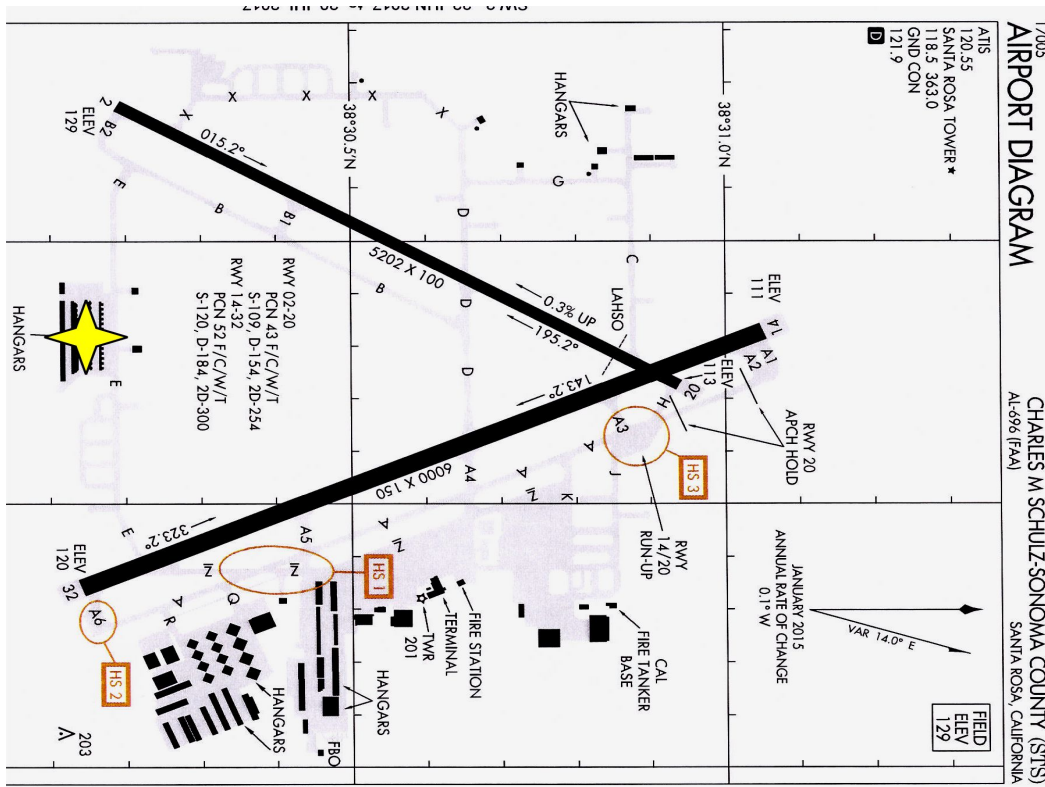
In STS, loop around behind the large shade tree hangar full of warbirds. UPS is typically waiting for you there.

If UKI is fogged in due to the valley, there are several small VFR-only fields between STS and UKI, but the preference is Lakeport (102) which is East of UKI near Clear Lake.

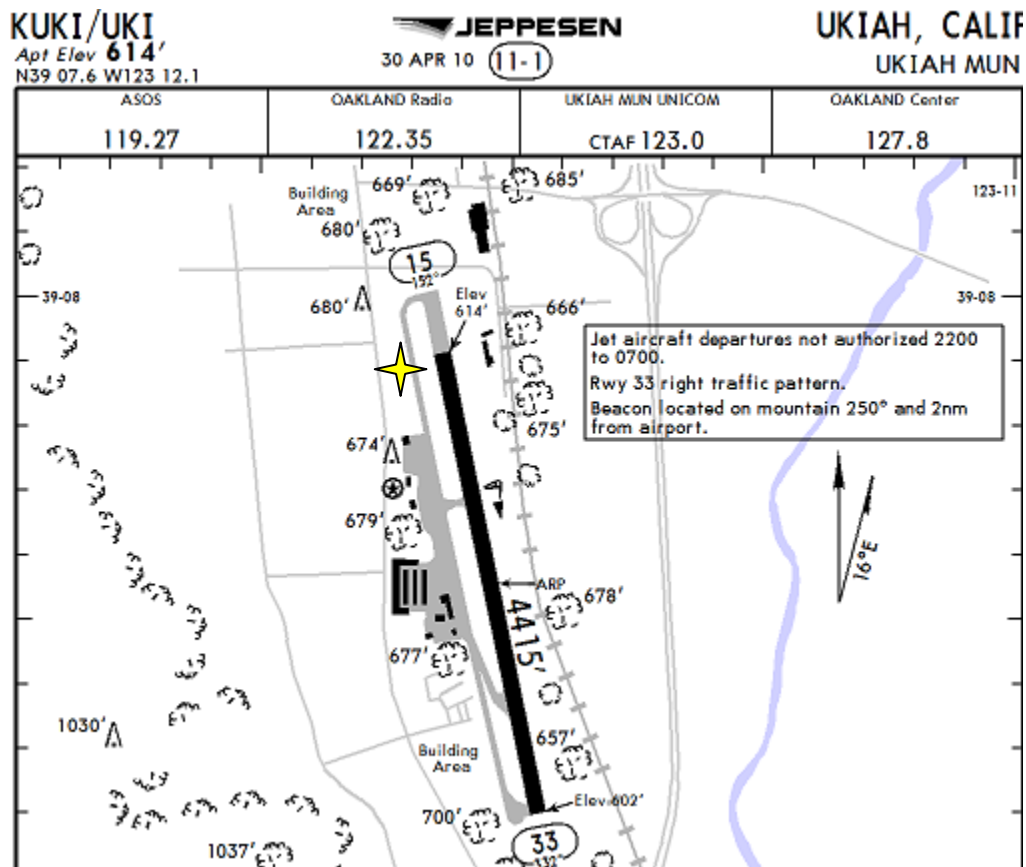


MARTINAIRE ROUTE DESCRIPTION

MRA 687



MRA Parking =



MARTINAIRE ROUTE DESCRIPTION

MRA 687

