

UPDATED: 03/30/2017

ROUTE NUMBER/CUSTOMER: 686/UPS  
 ROUTE DESCRIPTION: EYW-MIA-EYW  
 DAYS OF OPERATION: MONDAY (PM) THRU SATURDAY (AM)

**ROUTE:**

LEG:	DAYS:	SCHEDULED TIMES:	PART 135:	PART 91:
EYW-MIA	M-FRI	1845-1945 CT (1945-2045 ET)	<input checked="" type="checkbox"/>	
MIA-EYW	TUE-FRI	0645-0745 CT (0745-0845 ET)	<input checked="" type="checkbox"/>	
MIA-EYW	SAT	0700-0800 CT (0800-0900 ET)	<input checked="" type="checkbox"/>	

**IN POSITION TIME:**

PM: EYW M-FRI 1745 CENTRAL (1845 EASTERN)  
 AM: MIA TU-FRI 0545 CENTRAL (0645 EASTERN)  
 AM: MIA SAT 0600 CENTRAL (0700 EASTERN)

DESTINATION:	SUGG ALTERNATE:
KEYW	KMTH
KMIA	KFLL

**ROUTE NOTES:**

UPS FLIGHT NUMBER: EYW – MIA MA 0706  
 MIA – EYW MA 0705

Light in the evening: 50-100lbs typically. AM normally 14-1700lbs. Load and unload in EYW.

**CLEARANCE:**

LEG:	ROUTE:	ALTITUDE:
EYW-MIA	EYW-DVALL TWO ARRIVAL ( <a href="#">CARNU.DVALL2</a> )	9000
MIA-EYW	MIA FIVE DEPARTURE-MNATE-DIRECT(MIA5.MNATE)	8000

**CLEARANCE NOTES:** EXPECT VECTORS AFTER CROSSING THE SHORELINE (WPT WEVER) INBOUND MIA. EXPECT TO CROSS WPTs MTH/JANKA AT 4000 AND VECTORS AFTERWARDS INBOUND EYW.

**FUEL:**

LEG:	FUEL REQUIRED:	VENDOR:
EYW	AS REQUIRED	SIGNATURE AVITION (305-296-5422)
MIA	1500 lbs total.	SWISSPORT (305) 867-8487

**FUEL LOAD TO START RUNS EACH NIGHT IN MIA. \*\*\*ROUNDTRIP FUEL \*\*\***

**FUEL NOTES:** Fueled by ASIG, fueler usually shows every morning around 7 EST. Florida law requires no dumping of fuel, so EPA can must be drained every Tuesday and Thursday morning when fueler is present. The gas can be dumped into the fuel truck gas tank after sumping.

**CONTACT NUMBERS:**

UPS EYW OFFICE: 305-296-6536 OR 305-294-8801 UPS MIA OPS 305-869-8113  
 JEFF KESSLER – MANAGER 954-662-7272

# MARTINAIRE ROUTE DESCRIPTION

## MRA 686

MARK LABASCO – AM MANAGER 305-869-8089 CELL 786-390-9348

DAN ROKA – PM MANAGER 305-869-8075 CELL 786-390-9354

JEFF QUINLAN – AIR DIVISION MANAGER 954-359 5464

### FBO CONTACT NUMBERS

EYW SIGNATURE FLT SUPPORT 305-296-5422

### HOTEL CONTACT NUMBERS

EYW BEST WESTERN: 305-296-3500

MIA COMFORT INN: 305-871-6000

### WEATHER CONTACT NUMBERS

EYW ASOS 305-292-4046

MIA ASOS 305-870-0235

## RAMP INFORMATION:

LOCATION:	RAMP NAME:	FREQUENCY:	NOTES:
EYW	SIGNATURE	122.95	PARK IN SW SIDE(CLOSEST TO HANGARS)
MIA	UPS CARGO	129.42	MARSHALLERS WILL DIRECT

### **RAMP NOTES:**

MIA AIRPORT

UPS Ops 129.42 call on approach to MIA with expected on ground time. After landing give flight times and fuel order to UPS Ops by radio or in person at dispatch office/gateway operations. Crew van will transport you from aircraft to building.

### KEY WEST AIRPORT PARK POSITION:

MIAMI AIRPORT PARK POSITION: UPS RAMP, PARK FACING SOUTH NEXT TO BLAST FENCE, ADJACENT TO K1 AT APP END OF 8L.(not main UPS ramp area). YOU WILL BE ONE OF TWO AIRCRAFTS IN THIS AREA, AMERIFLIGHT HAS A METRO FROM CANCUN THAT PARKS NEXT TO YOU IN THE SAME AREA. WAIT FOR MARSHALLERS BEFORE MOVING ONTO RAMP.



***MRA 686***

***MRA 686***

KEYW/EYW

Apt Elev **3'**  
N24 33.4 W081 45.6

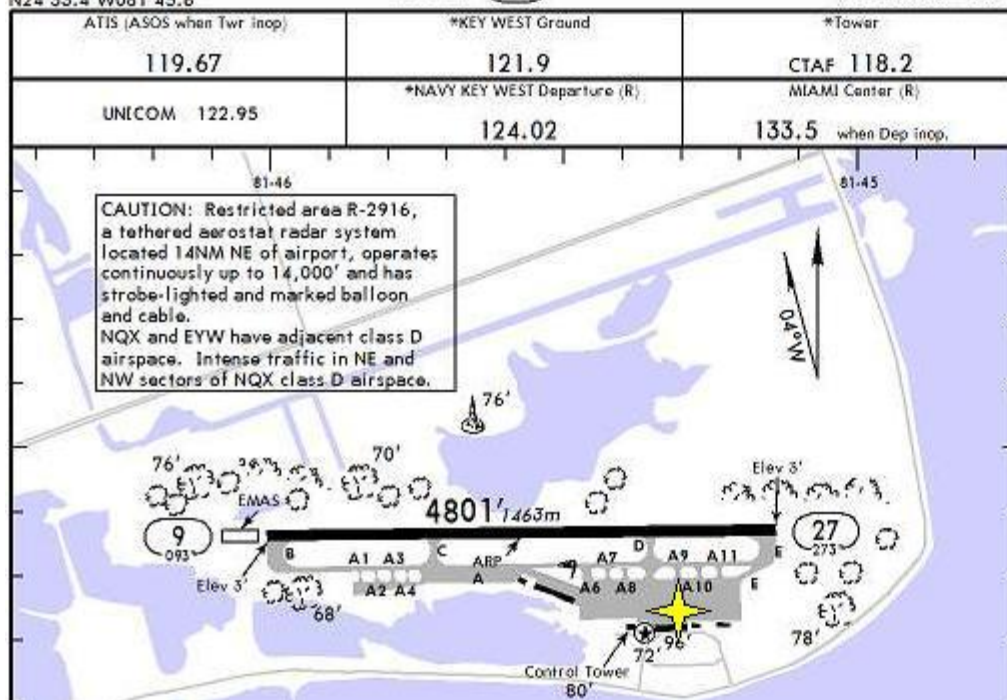


**JEPPESEN**

8 JUL 11 (10-9)

KEY WEST, FLA

KEY WEST INTL



MRA Parking = 

KMIA/MIA

Appt Elev **8'**  
N25 47.7 W060.17.4



JEPPesen

15 APR 11 (10-9)

MIAMI, FLA

MIAMI INTL

