

MARTINAIRE ROUTE DESCRIPTION

MRA 637

UPDATED: 01/21/2021

ROUTE NUMBER/CUSTOMER: 637 / UPS
ROUTE DESCRIPTION: (M-F am) GUY-WWR-WDG-OKC-WWR-GUY
(FRI pm-SAT) GUY-WWR-WDG-TUL-SWO-WDG-WWR- DEADHEAD TO GUY
DAYS OF OPERATION: MONDAY (PM) THRU SATURDAY (AM)

ROUTE:

LEG:	DAYS:	SCHEDULED TIMES: (CENTRAL)	PART 135:	PART 91:
GUY-WWR	M-FRI	1759-1844 CT	<input checked="" type="checkbox"/>	
WWR-WDG	M-FRI	1850-1931 CT	<input checked="" type="checkbox"/>	
WDG-OKC	M-THUR	1941-2021 CT	<input checked="" type="checkbox"/>	
WDG-TUL	FRI PM	1941-2024 CT	<input checked="" type="checkbox"/>	
OKC-WWR	T-FRI	0625-0720 CT	<input checked="" type="checkbox"/>	
WWR-GUY	T-FRI	0730-0815 CT	<input checked="" type="checkbox"/>	
TUL-SWO	SAT	0737-0805 CT	<input checked="" type="checkbox"/>	
SWO-WDG	SAT	0817-0837 CT	<input checked="" type="checkbox"/>	
WDG-WWR	SAT	0847-0931 CT	<input checked="" type="checkbox"/>	
WWR-GUY	SAT	0951-1030 CT		<input checked="" type="checkbox"/>

IN POSITION TIME:

PM: GUY 1735 CENTRAL
AM: OKC 0600 CENTRAL (T-FRI)** Check UPS734 on FlightAware and show 20 minutes after it's arrival.
AM: TUL 0630 CENTRAL (SATURDAY)** Call UPS TUL Ops at 0545 on Saturday AM to verify show time.

Approx arrival time of freight: 17:35 GUY / 05:30 OKC

ROUTE NOTES: REST OVERNIGHT in OKC. Pilot report OFF DUTY TIME to dispatch at night. Show IN a.m./OKC 9 hours after.

CLEARANCE:

LEG:	ROUTE:	ALTITUDE:
GUY-WWR	DIRECT	9000
WWR-WDG	DIRECT	7000
WDG-OKC	DIRECT	7000
WDG-TUL	DIRECT	7000
OKC-WWR	DIRECT	8000
WWR-GUY	DIRECT	8000

MARTINAIRE ROUTE DESCRIPTION

MRA 637

FUEL:

LEG:	FUEL REQUIRED:	VENDOR:
OKC	1500 LBS see notes	(OKC) AAR 130.05
TUL (SATURDAY)	1600 LBS see notes	(TUL) ATLANTIC 130.10
GUY	1800 LBS	CENTERLINE AVIATION (580-338-0481)

FUEL NOTES: AIRCRAFT IS FUELED OVERNIGHT IN OKC AND FRIDAY PM IN TUL. USE CAUTION TAKING HEAVY FUEL LOADS OR TOPPING OFF IN TUL AS FREIGHT LOAD CAN BE VERY HEAVY FOR SATURDAY AM OPS. FUELING MUST BE DONE ON THE UPS RAMP IN TUL.

CONTACT NUMBERS:

CUSTOMER CONTACT NUMBERS

GUY	UPS	580-338-3747
WWR	UPS	580-256-9463
WDG	UPS	580-237-3601
OKC	UPS	405-948-3770
OKC	UPS FAX	405-682-6057
SWO	UPS	405-624-3175
TUL	UPS	918-838-1753

FBO CONTACT NUMBERS

GUY	CENTERLINE AVIATION	580-338-0481
WWR	D AND D AVIATION	580-256-8286
WDG	CITY OF ENID	580-234-5476
OKC	AAR	405-218-3160
SWO	STILLWATER FLIGHT CTR	405-624-3175
TUL	ATLANTIC	918-836-4835

HOTEL CONTACT NUMBERS

GUY	BEST WESTERN	580-338-0800
LBL	LIBERAL INN	620-624-7254 WX ALTERNATE HAS SHUTTLE
WWR	NORTHWEST INN	580-256-7600
WWR	TAXI	580-256-2626 THEY WILL BILL US
WDG	BEST WESTERN	580-242-7110
OKC	SADDLEBACK INN	405-947-7000
TUL	PARK INN	918-835-9911
	HAS VAN SERVICE	

MARTINAIRE ROUTE DESCRIPTION

MRA 637

WEATHER CONTACT NUMBERS

GUY	AWOS	580-468-1476
LBL	AWOS	316-624-1221
WWR	AWOS	580-254-5217
WDG	AWOS	580-237-1475
TUL	ASOS	918-838-8437
TUL	ATIS	918-834-3764
OKC	AWOS	405-681-9853
SWO	AWOS	405-743-8150

RAMP INFORMATION:

LOCATION:	RAMP NAME:	FREQUENCY:	NOTES:
KGUY	MAIN GA RAMP	122.70	SECOND ROW PARKING, NORTH SPOT
KOKC	AAR	130.05	TIEDOWNS AT EDGE OF RAMP
KTUL	UPS RAMP	129.425	MARSHALLERS WILL DIRECT
KTUL	ATLANTIC AC	130.10	TYPICALLY SELF PARK WITH 633
KWWR	MAIN GA RAMP	122.80	ANYWHERE ON MAIN RAMP
KWDG	MAIN GA RAMP	122.95	ON COMPASS ROSE, FACING BUILDING
KSWO	MAIN GA RAMP	122.95	RIGHT IN FRONT OF FBO

RAMP NOTES:

GUY - Liberal, Kansas (LBL) is the alternate for GUY. Make sure there are LBL approach plates in the Aircraft, if not, obtain them from Dispatch. GUY can de-ice. LBL has a heated hangar.

WWR - Gate code 3290 Watch for animals on runway. Can hangar the airplane for \$25/day.

WDG - Park on compass rose. UPS will meet A/C there. Load typically 600-1000 lbs. Has de-icing capabilities.

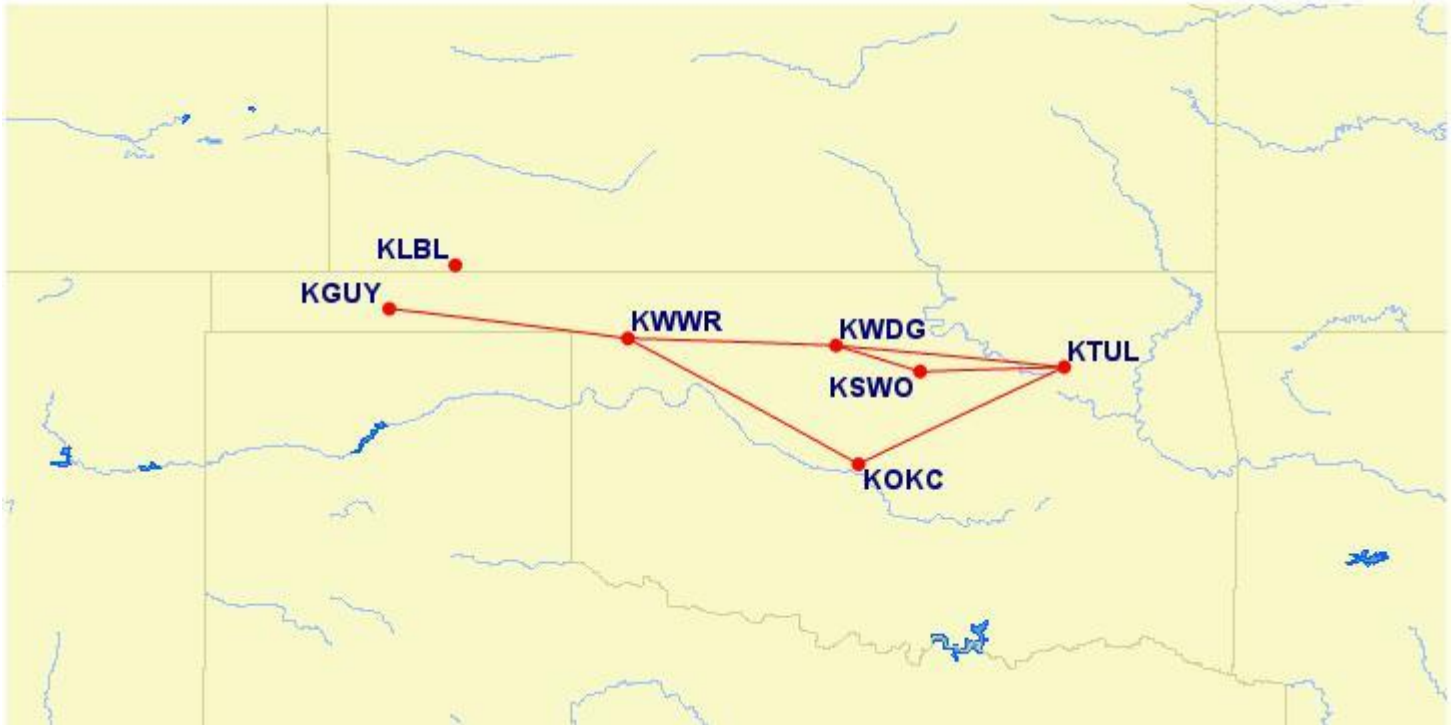
TUL - Turn in manifests to UPS. Pilot must be at A/C to accept and approve paperwork prior to loading. (Friday) Repo to Atlantic after unloading. Hotel will send van to pick up pilots if you call the Park Inn 918-835-9911. Hotel usually has reservations for us, or can direct bill.

IMPORTANT- On Saturday morning after departure, call TUL UPS Freq 129.42 to give them your ETA's to each of your stops (SWO, WDG, and WWR)

AT TUL THE UPS 757 TAKES PRECEDENCE OVER OUR OPERATIONS AND THEREFORE YOU MAY BE DELAYED ON THE RAMP UNTIL IT HAS DEPARTED.

OKC Clearance for 637 not available until after 0600. WWR FBO opens at 0800.

GUY Call Unicom (122.7) 15 miles out and Greg will call UPS to send driver.



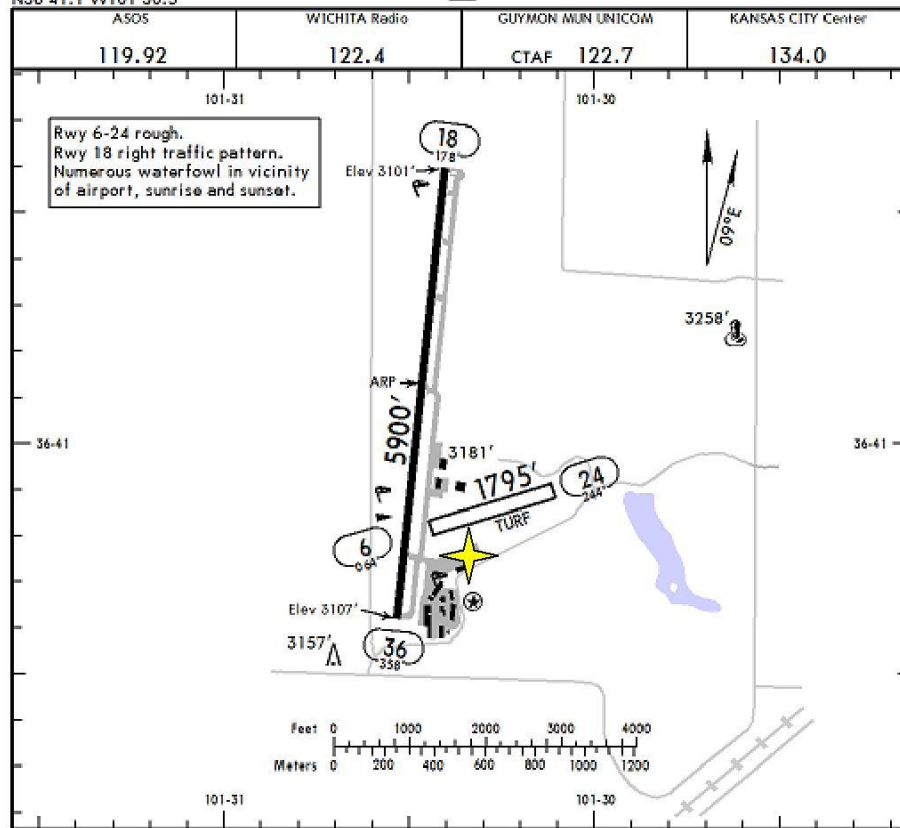
MARTINAIRE ROUTE DESCRIPTION

MRA 637

KGUY/GUY
Apt Elev 3123'
N36 41.1 W101 30.5

JEPPESEN
1 JUL 05 (12-1)

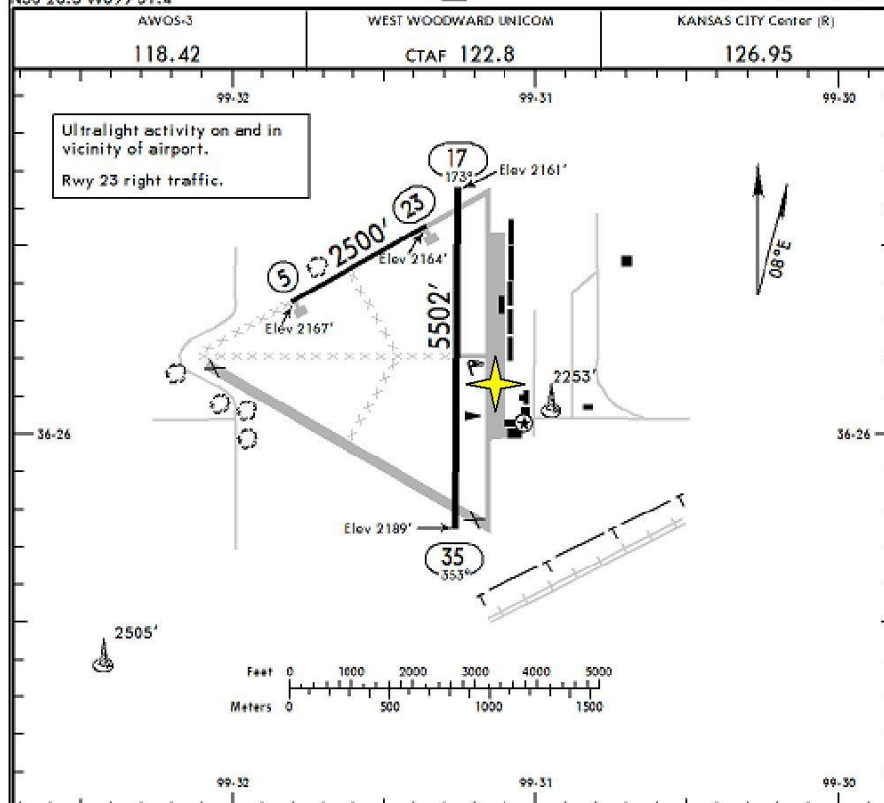
GUYMON, OKLA
GUYMON MUN



KWWR/WWR
Apt Elev 2189'
N36 26.3 W099 31.4

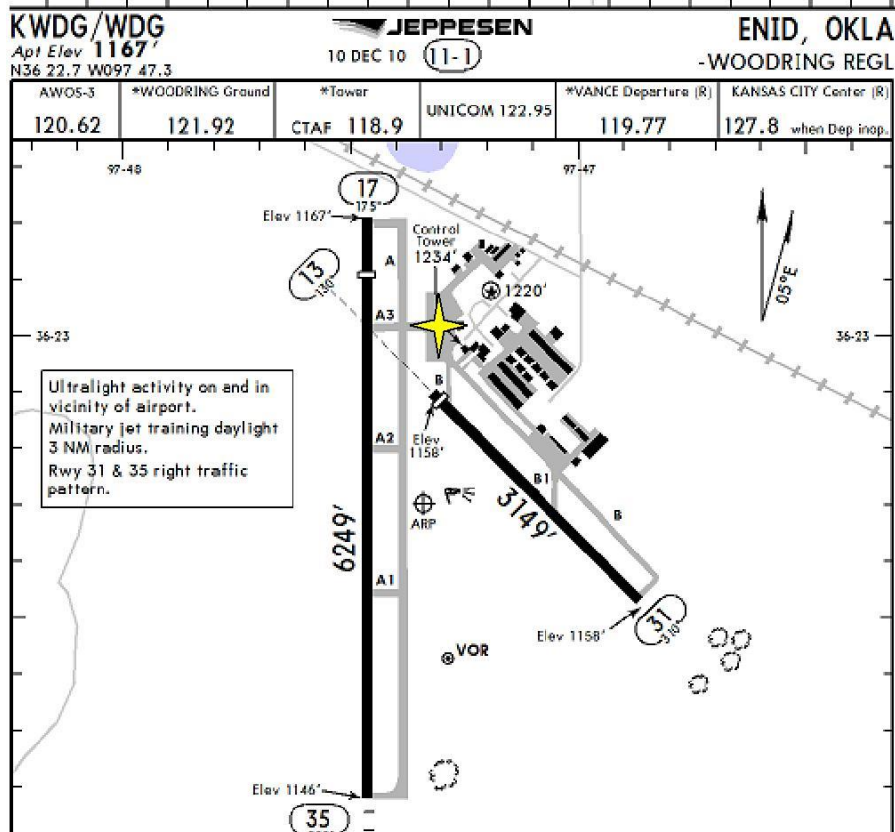
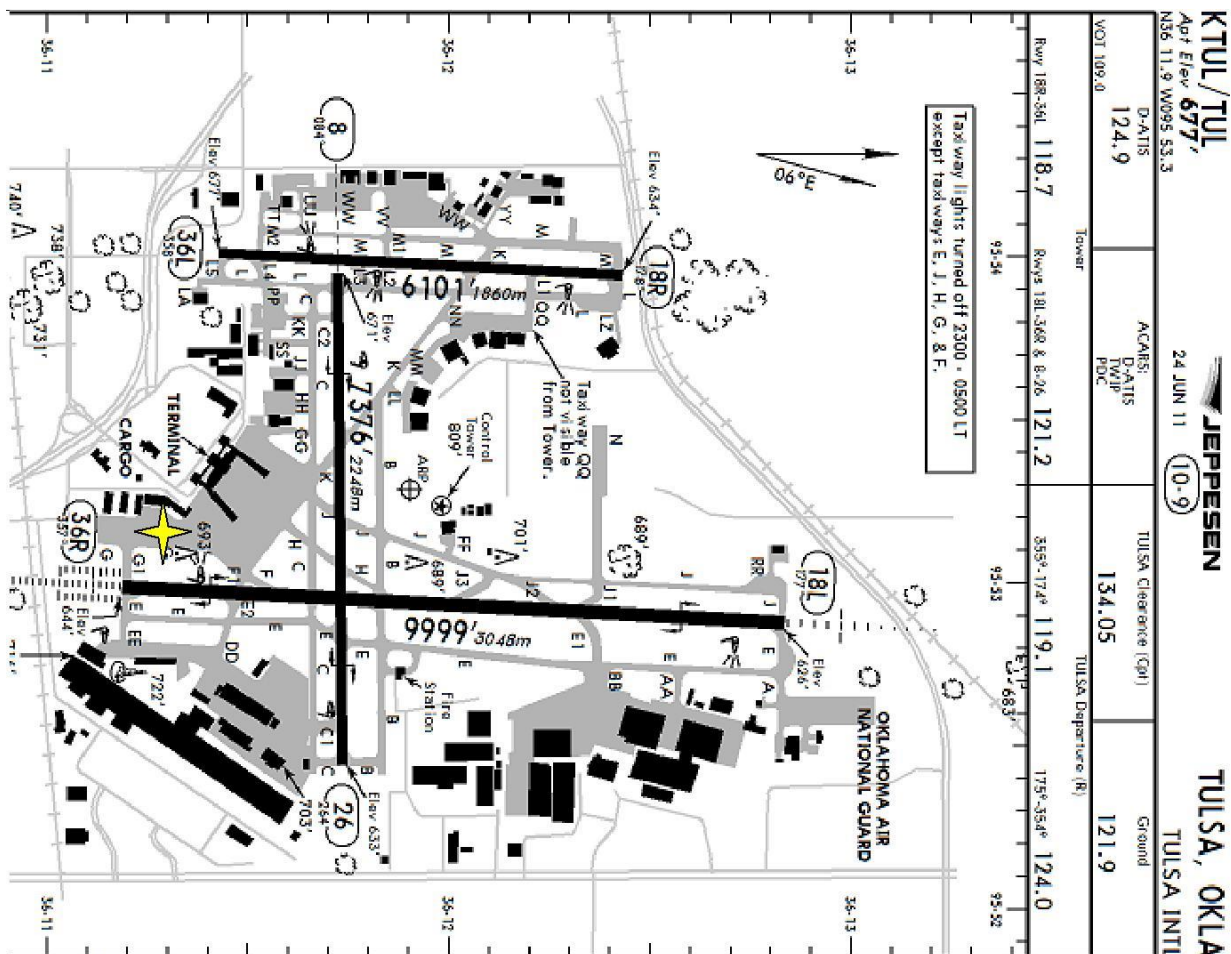
JEPPESEN
21 AUG 09 (10-9) Eff 27 Aug

WOODWARD, OKLA
WEST WOODWARD



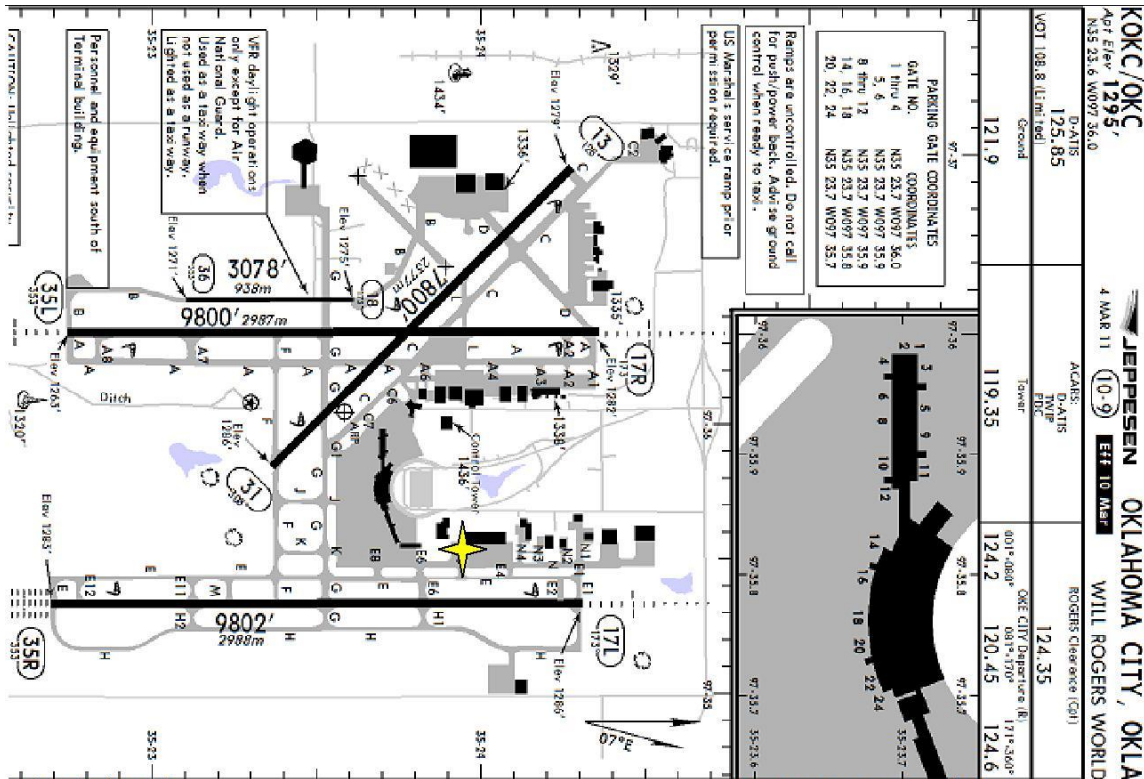
MARTINAIRE ROUTE DESCRIPTION

MRA 637



MARTINAIRE ROUTE DESCRIPTION

MRA 637



KSWO/SWO
Apt Elev 1000'
N36 09.7 W097 05.1

JEPPesen
15 JUL 05 (11-1)

STILLWATER, OKLA
STILLWATER REGL

