

MRA 625

MARTINAIRE ROUTE DESCRIPTION

UPDATED: 07/22/20

ROUTE NUMBER/CUSTOMER: 625 / UPS
ROUTE DESCRIPTION: DFW-SHV
DAYS OF OPERATION: SATURDAY (AM)

ROUTE:

LEG:	DAYS:	SCHEDULED TIMES:	PART 135:	PART 91:
TYR-DFW	SAT	0430-0530 CT		<input checked="" type="checkbox"/>
DFW-SHV	SAT	0645-0755 CT	<input checked="" type="checkbox"/>	
SHV-TYR	SAT	0815-0925 CT		<input checked="" type="checkbox"/>

IN POSITION TIME:

AM: DFW SAT 0530 CENTRAL

APPROX ARRIVAL TIME OF FREIGHT:
0600 CENTRAL DFW

ROUTE NOTES: Pilot may choose to reposition to DFW at any time following 655 AM ops on Friday with Dispatch approval.

CLEARANCE:

LEG:	ROUTE:	ALTITUDE:
TYR-DFW	CQY.DUMPY4 or CQY.CQY7 (expect direct if reposing on Sat. morn.)	6000
DFW-SHV	HUBB6.UIM EIC	7000
SHV-TYR	DIRECT	6000

CLEARANCE NOTES:

Contacting Regional Approach advise the weather and that you're parking on the west side. They may accommodate by letting you land on the 18s/36s or 13R.

FUEL:

LEG:	FUEL REQUIRED:	VENDOR:
TYR-DFW	FUEL THROUGH DFW TO SHV	TYLER JET CENTER (903-597-1334) 130.67
DFW-SHV	AS NEEDED	SWISSPORT
SHV-TYR	1200 LBS	TAC AIR 130.07

FUEL NOTES:

FUEL CAN BE OBTAINED IN DFW IF THE PILOT REPOS UP FRIDAY. LEAVE SLIP IN WINDOW LIKE NORMAL UPS RUN.

MARTINAIRE ROUTE DESCRIPTION

MRA 625

CONTACT NUMBERS:

CUSTOMER CONTACT NUMBERS

FBO CONTACT NUMBERS

TYR TYLER JET CENTER 903-597-1334
SHV TAC AIR 318-636-1000

HOTEL CONTACT NUMBERS

TYR HOLIDAY INN 903-561-5800
DFW HAWTHORNE 972-871-1412

WEATHER CONTACT NUMBERS

TYR ASOS 903-535-9105
DFW ASOS 972-453-0992
ATIS 972-615-2701
SHV ASOS 318-636-5767

RAMP INFORMATION:

LOCATION:	RAMP NAME:	FREQUENCY:	NOTES:
TYR	<i>TYLER JET</i>	<i>130.67</i>	THERE ARE THREE YELLOW TIRE SPOTS MARKED ON NE PORTION OF RAMP
DFW	<i>UPS CARGO</i>	<i>129.90</i>	MARSHALLERS WILL DIRECT
SHV	<i>WEST CARGO</i>		IN FRONT OF UPS BUILDING FACING TO THE NORTHWEST

RAMP NOTES:

Before entering UPS ramp, you must call on 129.9, DFW OPS, with flight number and TIME ON!
Before leaving the UPS ramp, you must call on 129.9, with flight number and tail number.

UPS loads in DFW and unloads in SHV.

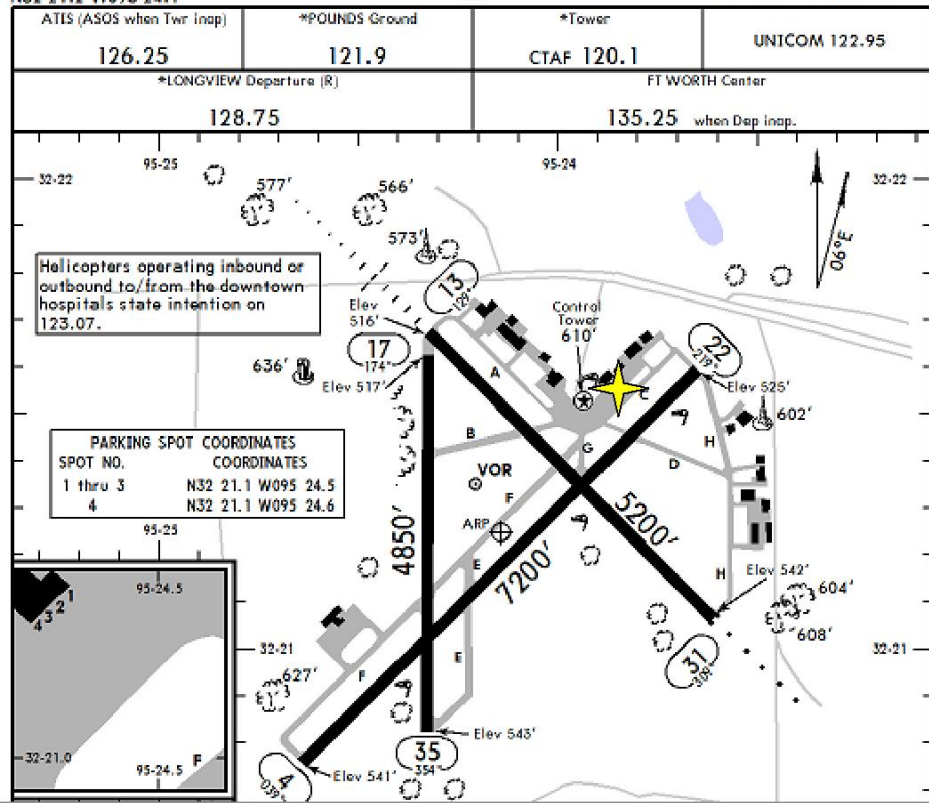
MARTINAIRE ROUTE DESCRIPTION

MRA 625

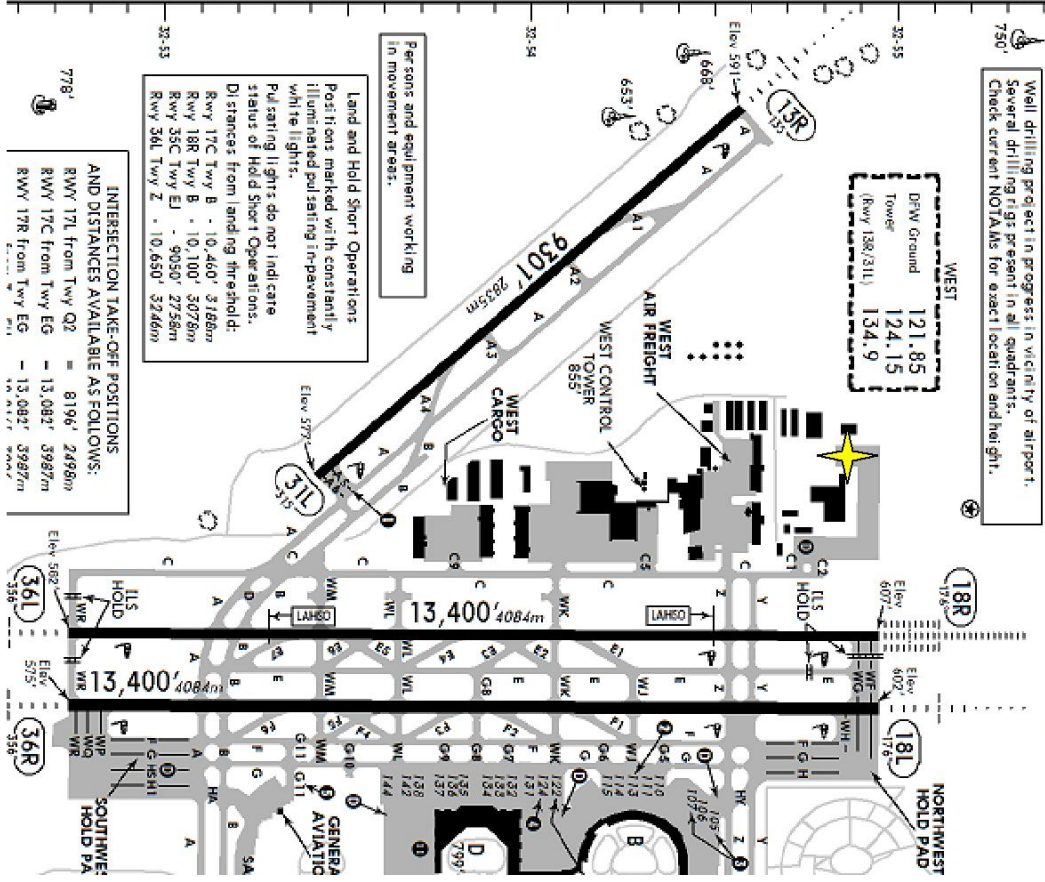
KTYR/TYR
Apt Elev 544'
N32 21.2 W095 24.1

JEPPESEN
29 APR 11 (11-1) Eff 5 May

TYLER, TEXAS
TYLER POUNDS REGL



MRA Parking =



KDFW/DFW
Apt Elev 607'
N32 53.8 W097 02.3

10 JUN 11 (60-9)

D-ATIS Departure	ACARS: D-ATIS FDC TWIP	DRW Clearance	DRW Ramp Tower	REGIONAL Departure (R)	Ground
135.92	128.25	129.95	121.85	121.65	121.8
124.15	126.55	134.9	127.5	124.82	125.12
					126.47
					118.55

MARTINAIRE ROUTE DESCRIPTION

MRA 625

14093

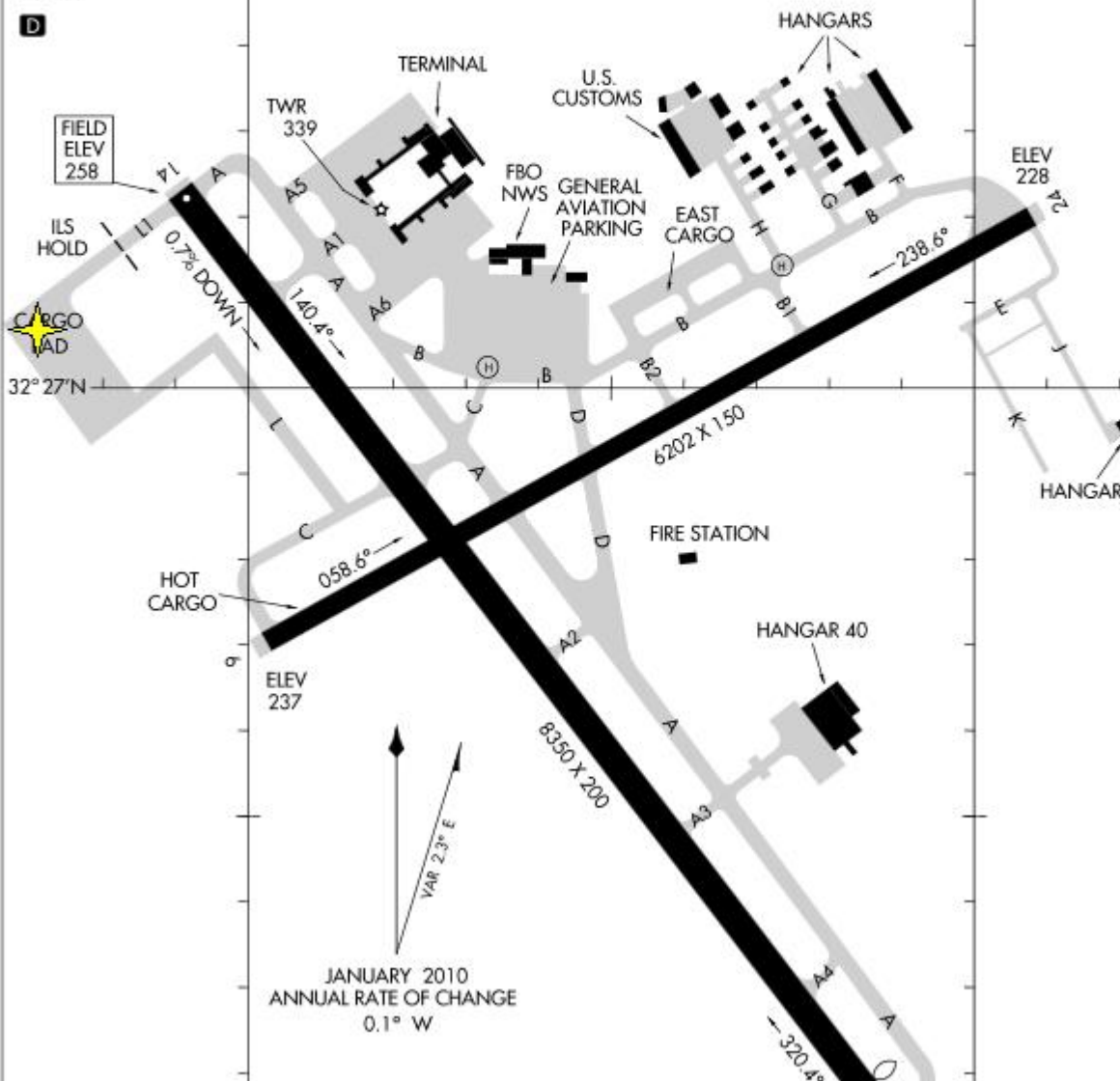
AIRPORT DIAGRAM

AL-884 (FAA)

SHREVEPORT RGNL (SHV)
SHREVEPORT, LOUISIANA

ATIS
128.45
SHREVEPORT TOWER
121.4 236.775
GND CON
121.9 236.775
CLNC DEL
124.65

D



SC-4, 29 MAY 2014 to 26 JUN 2014

SC-4, 29 MAY 2014 to 26 JUN 2014