

MARTINAIRE ROUTE DESCRIPTION UPS: MRA 636

UPDATED: 09/25/2018

ROUTE NUMBER/CUSTOMER: 636 / UPS
 ROUTE: MON (PM) - FRI (AM) MQI-RDU-MQI
 FRI (PM) - SAT (AM) MQI-EDE-RDU-EDE-MQI
 DAYS OF OPERATION: MONDAY (PM) THRU SATURDAY (AM)

ROUTE:

LEG:	DAYS:	SCHEDULED TIMES:	PART 135:	PART 91:
MQI-RDU	M-THUR	1814-1924 CT (1914-2024 ET)	<input checked="" type="checkbox"/>	
RDU-MQI	TUE-FRI	0545-0655 CT (0645-0755 ET)	<input checked="" type="checkbox"/>	
MQI-EDE	FRI (PM)	1830-1850 CT (1930-1950 ET)	<input checked="" type="checkbox"/>	
EDE-RDU	FRI (PM)	1915-2000 CT (2015-2100 ET)	<input checked="" type="checkbox"/>	
RDU-EDE	SAT (AM)	0636-0721 CT (0736-0821 ET)	<input checked="" type="checkbox"/>	
EDE-MQI	SAT (AM)	0752-0812 CT (0852-0912 ET)	<input checked="" type="checkbox"/>	

IN POSITION TIME:

PM: MQI 1814 ET
 IN POS 10 MIN EARLIER ON FRI
 APPROX ARRIVAL TIME OF FREIGHT MQI 1820 (ET)

AM: RDU

0545 EST
 CREW MEETS IN LOBBY OF HOTEL AT 515 (ET) FOR 530 SHUTTLE TO RDU
 ½ HOUR LATER ON SATURDAY

DESTINATION:	SUGG ALTERNATE:
KRDU	KGSO
KMQI	KECG
KEDE	KECG

ROUTE NOTES: SEE CLEARANCE NOTES BELOW ABOUT RESTRICTED AREA!

MQI Pilot Lounge Entrance Code 422. MQI Gate Code 4321.

UPS RDU jet cutoff time is 2020 local. If you cannot make it to RDU before 2020 local, you need to go to GSO.

CLEARANCE:

LEG:	ROUTE:	ALTITUDE:
MQI-RDU	DIRECT RMACK DIRECT	8000
RDU-MQI	RALEIGH 7 DIRECT RMACK DIRECT	9000
MQI-EDE	DIRECT RMACK DIRECT	4000
EDE-RDU	DIRECT TYI DIRECT	6000
RDU-EDE	RALEIGH 7 DIRECT TYI DIRECT	7000
EDE-MQI	DIRECT RMACK DIRECT	5000

CLEARANCE NOTES:

Use caution for restricted area between MQI and EDE. You CANNOT fly direct between the airports without hitting R5302. Flying on V189 will keep the pilot clear of the restricted areas. There are several restricted areas and MOAs around the MQI/EDE/ECG area. Use extra caution when performing non-scheduled routes.

MARTINAIRE ROUTE DESCRIPTION *UPS: MRA 636*

FUEL:

LEG:	FUEL REQUIRED:	VENDOR:
MQI-RDU	NONE	CITY FBO (252-475-5575) 122.80
RDU-MQI	1500 LBS (ROUNDTRIP)	LANDMARK (919-840-2200) 131.15
EDE	AS NEEDED	CITY FBO (252-482-4664) 123.00

FUEL LOAD TO START RUNS EACH NIGHT ON THE UPS RAMP RDU.

FUEL NOTES:

RDU: After unloading completed in RDU, a fueling clipboard located in the office of the UPS building is required to be filled out EACH night before leaving for the hotel.

CONTACT NUMBERS:

CUSTOMER CONTACT NUMBERS

RDU UPS 919-840-0421
 MQI UPS 252-473-3080 (call in AM for truck)

FBO CONTACT NUMBERS

MQI CITY FBO 252-475-5575 **122.80** Lobby code is 1200
 RDU LANDMARK 919-840-2200 **131.15**
 EDE CITY FBO 252-482-4664 **123.00**

HOTEL CONTACT NUMBERS

RDU EXTENDED STAY 919-998-0400
 EDE TRESTLE HOUSE INN 252-482-2282
 MQI ELIZABETHAN INN 252 473 2101
 ECG DAYS INN 252-335-4316

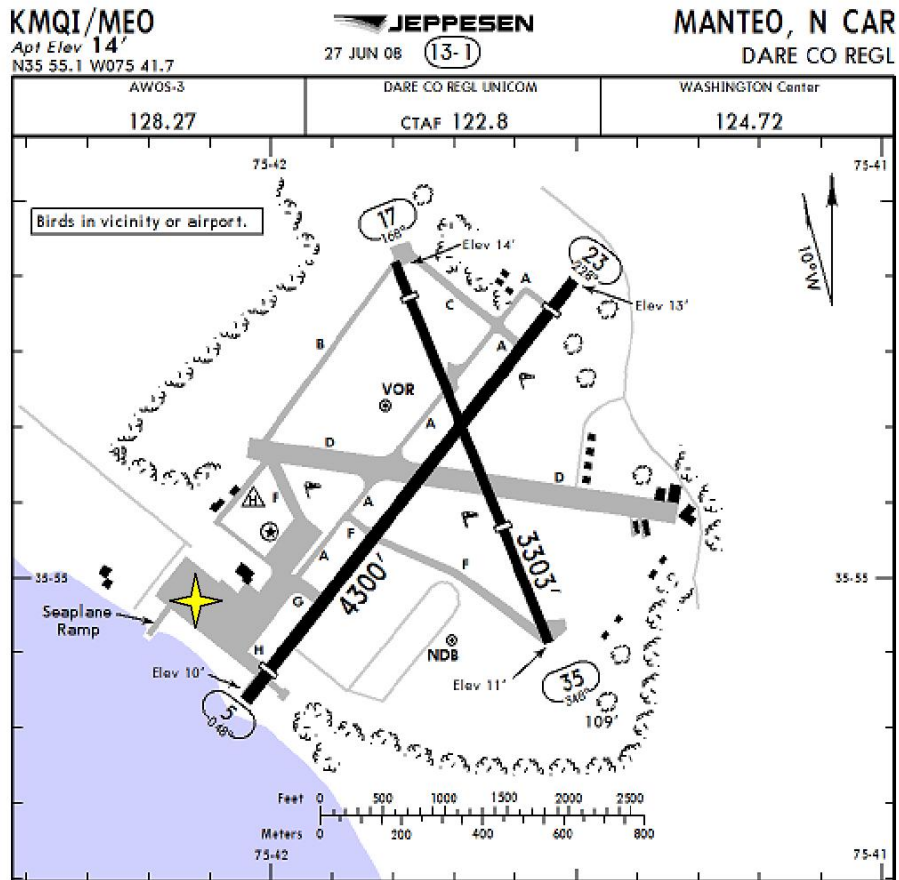
WEATHER CONTACT NUMBERS

MQI ASOS 252-473-2826
 EDE ASOS 252-482-0757
 RDU ASOS 919-840-0816

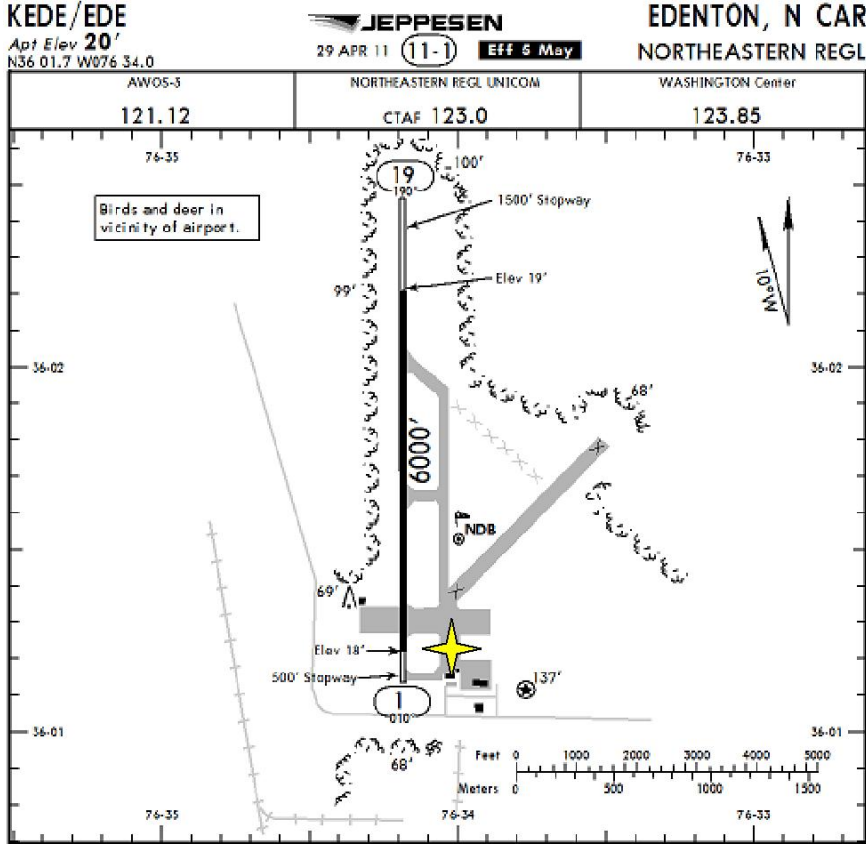
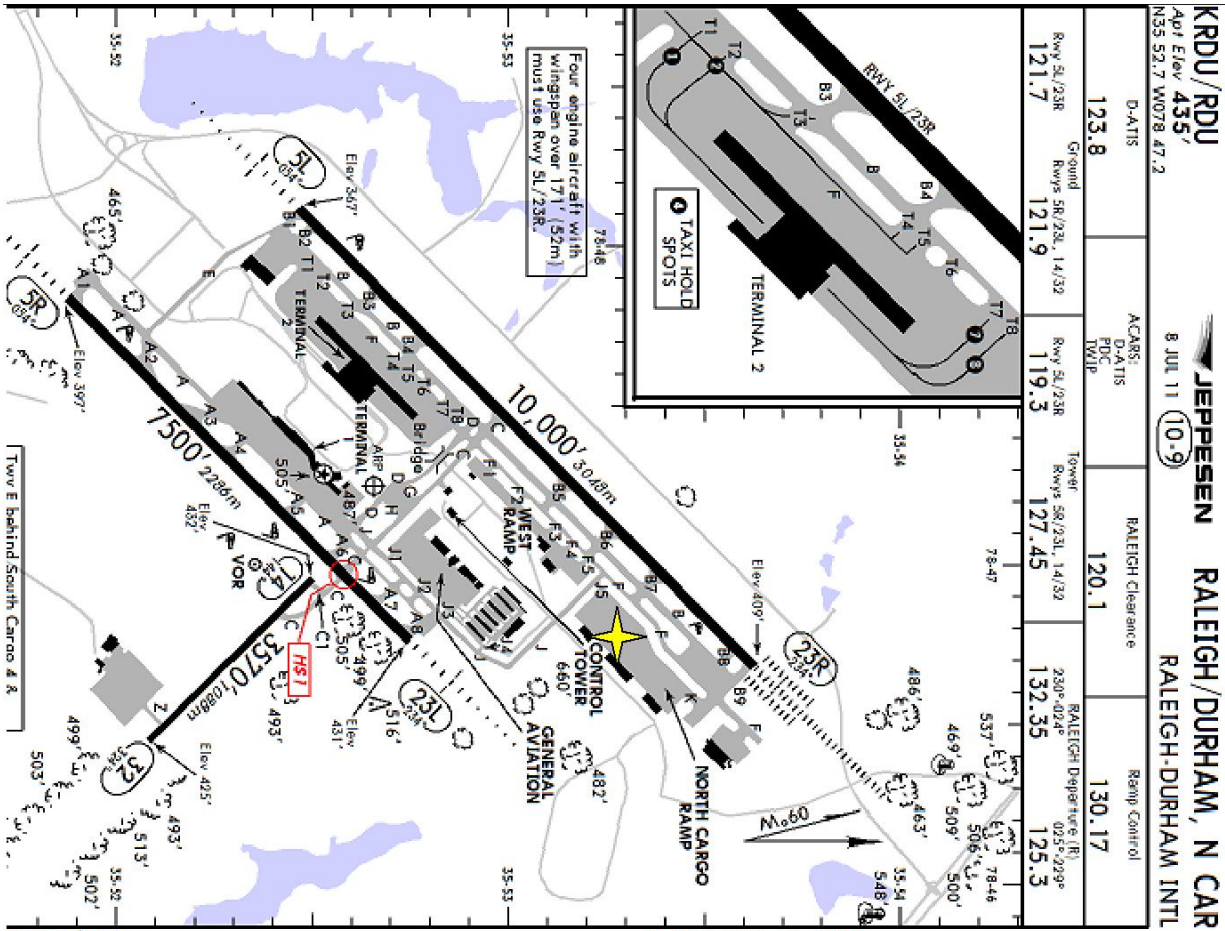
RAMP INFORMATION:

LOCATION:	RAMP NAME:	FREQUENCY:	NOTES:
MQI	SW OF FBO	122.80	PARK BETWEEN CONES
RDU	UPS RAMP	129.425	MARSHALLERS WILL DIRECT
EDE	GA RAMP	123.0	SEE A/P DIAGRAM BELOW

MARTINAIRE ROUTE DESCRIPTION UPS: MRA 636



MARTINAIRE ROUTE DESCRIPTION UPS: MRA 636



MRA Parking = 