

MARTINAIRE ROUTE DESCRIPTION

MRA 662

UPDATED: 03/30/2017

ROUTE NUMBER/CUSTOMER: 662 / UPS
ROUTE DESCRIPTION: DFW-ABI
DAYS OF OPERATION: TUE (AM) THRU FRIDAY (AM)

ROUTE:

LEG:	DAYS:	SCHEDULED TIMES: <i>Central Time</i>	PART 135:	PART 91:
ADS-DFW	TU-FRI	0545-0600 CT ***REPO FLIGHT***		<input checked="" type="checkbox"/>
DFW-ABI	TU-FRI	0640-0750 CT	<input checked="" type="checkbox"/>	
ABI-DFW OR ADS	TU-FRI	0800-0910 ***REPO FLIGHT***		<input checked="" type="checkbox"/>

IN POSITION TIME:

AM: ADS TU-FRI 0445 CENTRAL

AM: DFW TU-FRI 0530 CENTRAL

APPROX ARRIVAL TIME OF FREIGHT:

0620 CENTRAL DFW

DESTINATION:	SUGG ALTERNATE:
KABI	KSJT, KBWD, KMAF

ROUTE NOTES:

Call Dispatch at 0430 each morning to find out where the airplane is located. Airplane is either located in ADS or DFW. (Aircraft is normally in ADS. Call dispatch to find out which aircraft is available.) Fly cargo to ABI return empty to either DFW or ADS as required. Check with Dispatch before leaving ABI as there may have been change in plans. Monitor Company 128.87 at all times.

CLEARANCE:

LEG:	ROUTE:	ALTITUDE:
DFW-ABI	KINGDOM 7 DEPARTURE-MILLSAP TRANS V66 ABI (KING7.MQP)	8000
ABI-DFW	GLEN ROSE 9 ARRIVAL ABI TRANS (ABI.JEN9)	9000
ABI-ADS	KNEAD 6 ARRIVAL ABI TRANS (ABI.KNEAD6)	9000

CLEARANCE NOTES:

FUEL:

LEG:	FUEL REQUIRED:	VENDOR:
DFW-ABI	1000 LBS	SWISSPORT
ABI-DFW OR ADS	1000 LBS	ABI AERO (325-677-2601)

FUEL AS NEEDED IN DFW IN AM. *** NO ROUND TRIP FUEL***

FUEL NOTES:

The aircraft may have a variety of fuel loads depending on its use the night before. Fuel as needed on the DFW UPS ramp to get to ABI, then as needed in ABI to return to DFW/ADS. For ABI to ADS, fuel in Abilene to 1450 lbs. to land in ADS with 1100 lbs. onboard.

CONTACT NUMBERS:

CUSTOMER SERVICE CONTACT NUMBERS

ABI UPS 325 695 0933
DFW UPS 972 456 4816

FBO CONTACT NUMBERS

DFW ALLIED 972 574 2615
ABI ABI AERO 325 677 2601
325 671 8018

HOTEL CONTACT NUMBERS

ABI WHITTEN INN 325 677 8100
DFW HAWTHORNE

WEATHER CONTACT NUMBERS

DFW ASOS 972 453 0992
DFW ATIS 972 615 2701
ABI AWOS 325 201 9467

RAMP INFORMATION:

LOCATION:	RAMP NAME:	FREQUENCY:	NOTES:
DFW	<i>UPS CARGO</i>	<i>129.90</i>	MARSHALLERS WILL DIRECT
ABI	<i>ABI AERO</i>	<i>121.70</i>	N ABI AERO RAMP

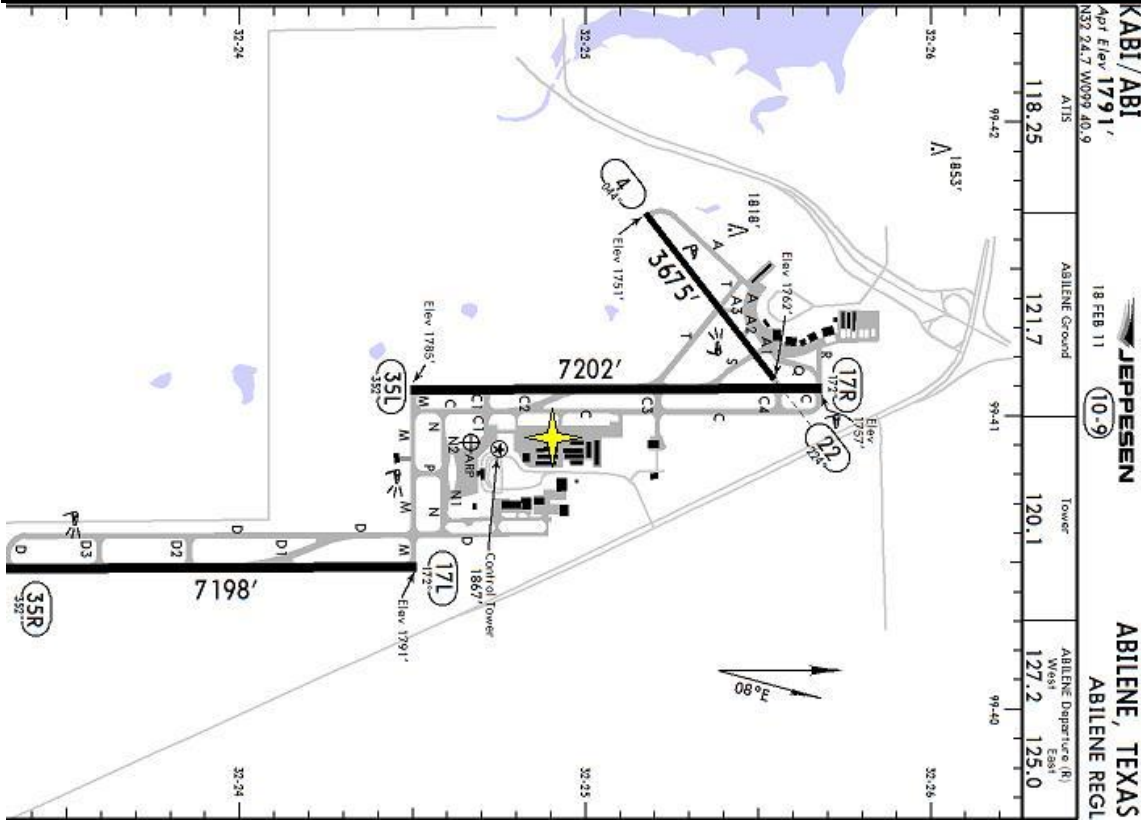
RAMP NOTES:

ABI – Park facing North if winds permit (easier to back the truck in)
Before entering UPS ramp, you must call on 129.90, DFW OPS, with flight number.
Before leaving the UPS ramp, you must call on 129.90, with flight number and tail number.

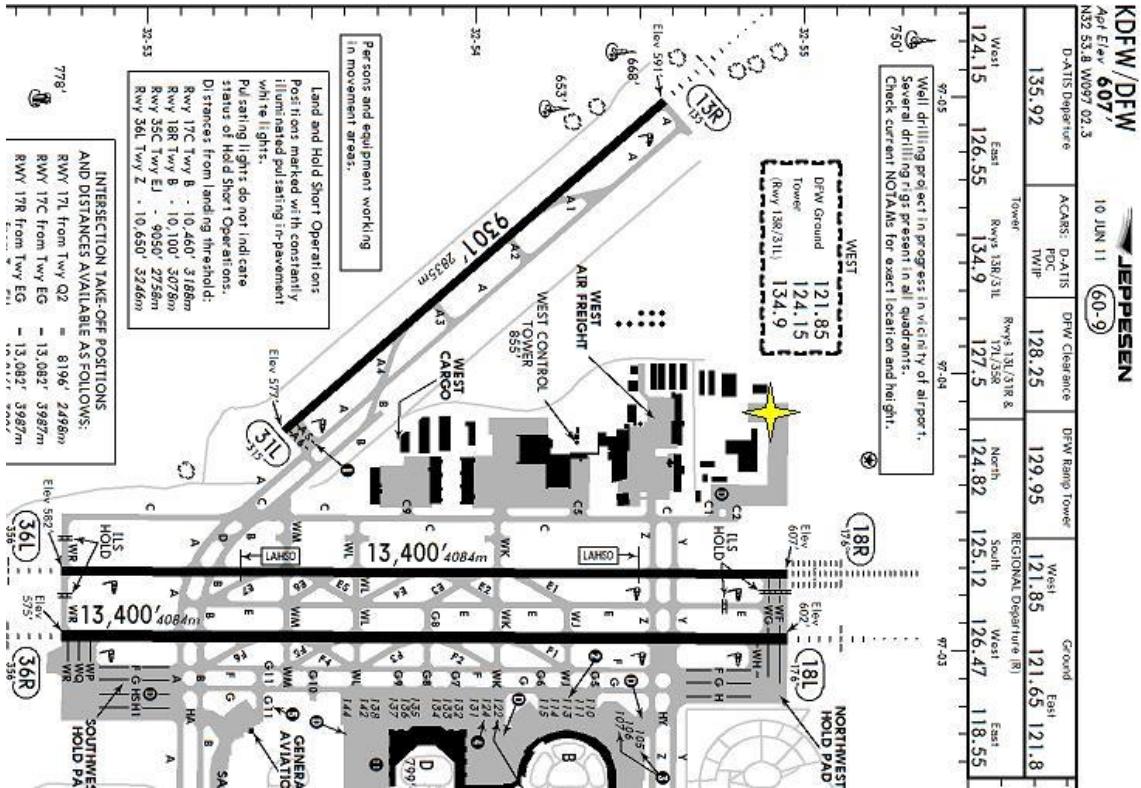


MARTINAIRE ROUTE DESCRIPTION

MRA 662



MRA Parking =



ACARS: D-ATIS	DFW Clearance	DFW Ramp Tower	West REGIONAL Departure (R)	East
135.92	128.25	129.95	121.85	121.65
124.15	134.9	124.82	125.12	118.55

Well drilling project in progress in vicinity of airport. Several drilling rigs present in all quadrants. Check current NOTAMS for exact location and height.

Persons and equipment working in movement areas.
Land and Hold Short Operations: Positions marked with constantly illuminated pulsating pavement lights.
Pulsating lights do not indicate status of Hold Short Operations. Distances from landing threshold:
RWY 17C Twy B - 10,460' 3188m
RWY 18R Twy B - 10,100' 3078m
RWY 35C Twy E1 - 9050' 2758m
RWY 36L Twy Z - 10,650' 3246m