

MARTINAIRE ROUTE DESCRIPTION

MRA 689

UPDATED: 06/14/2017

ROUTE NUMBER/CUSTOMER: 689/UPS
ROUTE BASE: MRY-OAK-MRY
DAYS OF OPERATION: MON (PM) – SAT (AM)

ROUTE:

LEG:	DAYS:	SCHEDULED TIMES:	PART 135:	PART 91:
MRY-OAK	M-FRI	1950-2021 CENTRAL (1750-1821 PACIFIC)	<input checked="" type="checkbox"/>	
OAK-MRY	TU-FRI	0815-0846 CENTRAL (0615-0646 PACIFIC)	<input checked="" type="checkbox"/>	
OAK-MRY	SAT	1000-1031 CENTRAL (0800-0831 PACIFIC)	<input checked="" type="checkbox"/>	

IN POSITION TIME:

PM: MRY 1840 CENTRAL 1640 PACIFIC
AM: OAK 0800CENTRAL 0600 PACIFIC
AM: OAK (SAT) 0900 CENTRAL 0700 PACIFIC

DEST:	SUGG ALTERNATE:
KMRY	KSNS
KOAK	KSJC

ROUTE NOTES:

MRY PM DEPARTURE: WITHOUT A MRY AIRPORT BADGE, IT IS NECESSARY TO CALL DEL MONTE AVIATION AT (831) 373-4151 FOR ENTRY TO THE AIRPORT. EXPECT A 10-30 MINUTE WAIT. GATE V26 IS THE CLOSEST VEHICLE ACCESS POINT TO THE SOUTHEAST HANGARS, WHERE THE AIRCRAFT IS PARKED. VEHICLE CAN BE LEFT IN ONE OF THE PARKING SPACES ON THE EAST SIDE OF THE HANGAR APPROXIMATELY 400 FEET WEST OF AIRCRAFT. GET PARKING PERMIT FOR RENTAL CAR ETC FROM DEL MONTE AVIATION – THEY DO GIVE TICKETS WITHOUT THEM. DUE TO MRY NORMALLY HAVING ONLY ONE CONTROLLER PERFORMING THE DUTIES OF CLEARANCE, GROUND, AND TOWER IN THE EVENING, IT IS ADVISABLE TO PICK UP CLEARANCE AS SOON AS POSSIBLE TO AVOID DELAYS. FLIGHT PLAN IS FILED FOR 1730 LOCAL, SO CLEARANCE CAN BE PICKED UP AS EARLY AS 1700. IF OAK HAS FLOW CONTROL (INDICATED ON MRY ATIS), IT IS IMPERATIVE THAT CLEARANCE BE PICKED UP EARLY, OR WHEELS UP TIME MAY BE TOO LATE. CANCEL IFR AS SOON AS POSSIBLE AFTER DEPARTURE (OR DEPART VFR) TO AVOID UNNECESSARY ROUTING DELAYS. THIS ROUTE IS VERY SUSCEPTIBLE TO ATC DELAYS DUE TO THE HIGH VOLUME OF TRAFFIC IN THE BAY AREA AND MONTEREY. IF UNABLE TO DEPART MRY PRIOR TO APPROXIMATELY 1810, CALL UPS AT (415) 271-1061 AND ASK WHERE THEY WANT YOU TO GO. IF ETA AT OAK IS TOO LATE, THEY MAY REQUEST FREIGHT TO BE FLOWN TO SAN JOSE (SJC). FREIGHT ARRIVES AT APPROXIMATELY 1740 AND PILOT HELPS LOAD AIRCRAFT.

OAK PM ARRIVAL: IT IS PREFERABLE TO LAND RWY 29 DUE TO THE SHORTER TAXI TO UPS. IF ASSIGNED RWYS 27L OR 27R, EXPECT A 180 BACK TAXI TO TAXIWAY BRAVO. LOOK FOR MARSHALLERS ON UPS RAMP. UPS WILL UNLOAD AIRCRAFT. REPOSITION TO KAISER AIR (ON THE NORTH FIELD) AFTER UNLOADING. MARSHALLERS WILL GUIDE YOU OFF THE UPS RAMP. AT KAISER AIR, A TRUCK WILL OFTEN GUIDE YOU TO A PARKING SPOT. IF NOT, ANY SPOT IS OK. CALL HOLIDAY INN AT (510) 638-7777 FOR SHUTTLE AND SPECIFY THAT YOU ARE AT KAISER AIR.

MRY AM ARRIVAL: EXPECT THE ILS RWY 10R IF LOW IFR. TAXI TO THE "SOUTHEAST HANGARS" VIA TAXIWAY ALPHA, AND TURN SOUTH ONTO THE UNNAMED TAXIWAY AT THE EAST END OF THE HANGARS. PARKING SPOT IS STRAIGHT AHEAD AT THE TOP OF AN INCLINE. PILOT HELPS UNLOAD THE AIRCRAFT. IF ARRIVING WITHOUT A VEHICLE, CALL DEL MONTE AVIATION AT (831) 373-4151 FOR A RIDE OFF THE AIRPORT.

IF DIVERSION IS NECESSARY, UPS PREFERS SALINAS (SNS). IF BOTH MONTEREY AND SALINAS ARE BELOW APPROACH MINS, WATSONVILLE (WVI) IS ANOTHER CLOSE ALTERNATE. IF NONE OF THESE COASTAL AIRPORTS ARE POSSIBLE, HOLLISTER (CVH) IS AN INLAND OPTION FOR WAITING OUT THE COASTAL FOG. NOTIFY UPS OF DIVERSION ASAP. UPS WILL NORMALLY NOT DRIVE TO HOLLISTER OR WATSONVILLE.

MARTINAIRE ROUTE DESCRIPTION

MRA 689

SATURDAY: SCHEDULED DEPARTURE TIME IS 0800 LOCAL. UPS REQUIRES AIRCRAFT TO BE ON THEIR RAMP BY 0730. EXPECT THE NUEVO 5 DEPARTURE AND RWY 29.

CLEARANCE:

LEG:	ROUTE:	ALTITUDE:
MRY-OAK	Monterey 4 Departure SNS, V111 KARNN INTERSECTION, V301 SUNOL INTERSECTION, DIRECT OAK	8000
OAK-MRY	Nuevo 8 Departure SHOHEY TRANSITION, DIRECT ZEBED, DIRECT MRY	7000

CLEARANCE NOTES:

****IF DEPARTING OAK LATER THAN 0700 LOCAL ATC WILL LIKELY ISSUE THE NUEVO 5 DEPARTURE AND ASSIGN RUNWAY 29****

FUEL:

LOCATION:	FUEL: BRING TO	VENDOR:	FREQ:
MRY	<i>NONE</i>	<i>DEL MONTE AV (831-373-4151)</i>	122.95
OAK	<i>1200 LBS</i>	<i>SWISSPORT (510-719-7682)</i>	N/A

FUEL NOTES:

***** ROUND TRIP FUEL REQUIRED*** FUEL EACH MORNING IN KOAK**

NORMALLY SWISSPORT WILL ARRIVE AT THE UPS RAMP EACH WEEKDAY MORNING TO FUEL MARTINAIRE AIRCRAFT, IF THE TRUCK HASN'T ARRIVED WITHIN 10 MINUTES OR SO CALL SWISSPORT AT (510) 719-7682 AND REQUEST FUEL. NORMALLY SWISSPORT WILL NOT COME TO THE UPS RAMP ON SATURDAY MORNINGS SO YOU WILL HAVE TO CALL THEM. 1100 LBS IS THE NORMAL ROUND-TRIP FUEL LOAD. WHEN THE FUEL TRUCK ARRIVES YOU WILL TELL THE DRIVER

YOUR FUEL REQUEST AND HE WILL GIVE A SWISSPORT FUEL TICKET TO THE UPS SUPERVISOR TO SIGN AFTER FUELING THE AIRCRAFT. MAKE SURE THE UPS RAMP SUPERVISOR GIVES YOU THE MANILLA COLORED COPY OF THE FUEL TICKET AND HE/SHE WILL KEEP THE PINK COPY. MAKE SURE YOUR MARTINAIRE FUEL TICKET MATCHES THE GALLONS ON THE SWISSPORT FUEL TICKET (YOUR REQUESTED AMOUNT MAY NOT BE THE SAME AS THE ACTUAL AMOUNT OF FUEL, SO COMPLETE THE GALLONS PORTION OF THE MARTINAIRE FUEL TICKET AFTER YOU HAVE GOTTEN THE SWISSPORT FUEL TICKET)

CONTACT NUMBERS:

FBO CONTACT NUMBERS:

MRY DEL MONTE AVIATION (831) 373-4151
MRY MONTEREY JET CENTER (888) 679-2992
OAK SWISSPORT (510) 719-7682
OAK KAISER AIR (800) 538-2625

CUSTOMER CONTACT NUMBERS:

SJC UPS (CALL IF LATE OUT OF MRY) (415) 271-1061
SJC UPS #2 (408) 298-0496
MRY UPS KENT BOOTH, SUPERVISOR (831) 375-1557
MRY UPS (831) 375-1556
OAK UPS KEVIN WRIGHT, MANAGER (510) 633-6977
OAK UPS (510) 633-6916
OAK UPS FEEDER INFO (510) 633-6933

MARTINAIRE ROUTE DESCRIPTION

MRA 689

WEATHER CONTACT NUMBERS:

OAK ASOS (510) 383-9514
OAK ATIS (510) 635-5850
MRY AWOS (831) 642-0241
MRY ATIS (831) 375-7433

HOTEL:

OAK HOLIDAY INN (510) 638-7777
MRY DAYS INN (831)-375-2168
MRY COMFORT SUITES (831)-372-2945

RAMP INFORMATION:

LOCATION:	RAMP NAME:	FREQUENCY:	NOTES:
MRY	<i>DELMONTE</i>	<i>131.5</i>	FAR EAST END OF SOUTHEAST HANGARS
OAK	<i>UPS CARGO</i>	<i>??</i>	MARSHALLERS WILL DIRECT
OAK	<i>KAISER AIR</i>	<i>129.750</i>	<i>??</i>

RAMP NOTES:

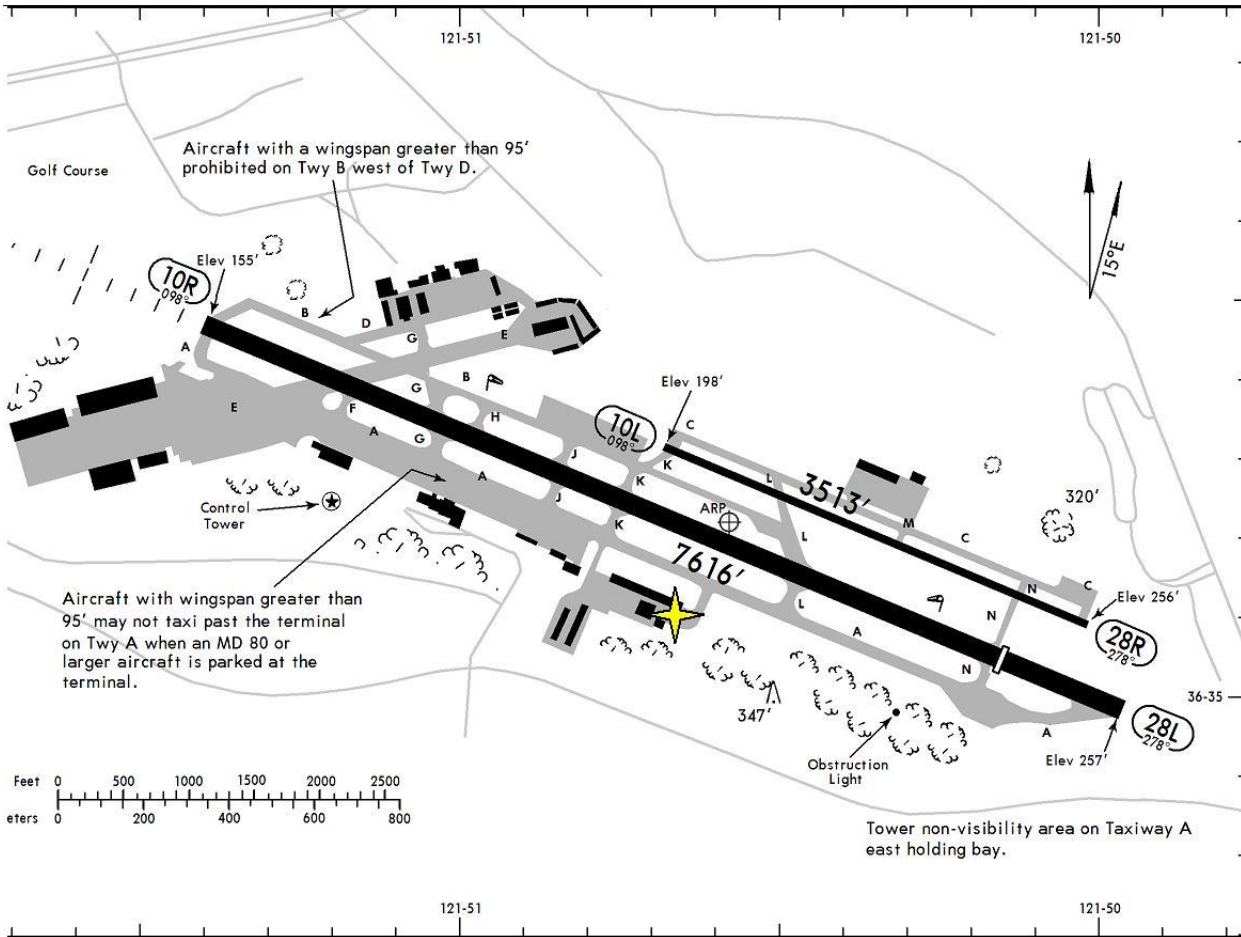
OAK: KAISER AIR- ON THE "NORTH FIELD" IDEALLY 2ND LINE OR FURTHER FROM FBO BUILDING

UPS- ON THE "SOUTH FIELD" NEAR THE INTERSECTION OF TAXIWAYS BRAVO AND SIERRA, ACROSS FROM THE FEDEX COMPLEX.

MRY: FAR EAST END OF SOUTHEAST HANGARS, AT YELLOW "T". AS OF 08-2008, THERE IS A LONELY PAIR OF YELLOW CHOCKS AT THE PARKING SPOT

MARTINAIRE ROUTE DESCRIPTION

MRA 689



KMRV/MRY Apt Elev 257' NSG 35.2 W121 50.6		JEPPesen 16 OCT 09 (10-9) EFF 22 OCT		MONTEREY, CALIF MONTEREY PENINSULA	
ATIS (ASOS when Twr Inop) 119.25	*MONTEREY Clearance 135.45	*MONTEREY Ground 121.9	*Tower 118.4	UNICOM 122.95	NORCAL Departure (R) 360°-150° 151°-359° 133.0
			CTAF 118.4	127.15	

MRA Parking = 

MARTINAIRE ROUTE DESCRIPTION

MRA 689

KOAK/OAK

Apt Elev 9'
N37 43.3 W122 13.2

JEPPESSEN

17 SEP 10 (10-9) Eff 23 Sep

OAKLAND, CALIF

METRO OAKLAND INTL

