

MARTINAIRE ROUTE DESCRIPTION

MRA 679

UPDATED: 10/21/2014

ROUTE NUMBER/CUSTOMER: 679 / UPS
ROUTE: VCT-IAH-VCT
DAYS OF OPERATION: MONDAY (PM) SATURDAY (AM)

ROUTE:

LEG:	DAYS:	SCHEDULED TIMES:	PART 135:	PART 91:
VCT-IAH	M-FRI	1945-2044 CT	<input checked="" type="checkbox"/>	
IAH-VCT	TU-FRI (AM)	0637-0742 CT	<input checked="" type="checkbox"/>	
IAH-VCT	SAT (AM)	0730-0827 CT	<input checked="" type="checkbox"/>	

IN POSITION TIME:

VCT: 1845 (CENTRAL)
IAH: 0545 (CENTRAL)

ROUTE NOTES: Call UPS Operations on 129.42 once you get a runway assignment in IAH with your ETA on the ramp. In the morning, call them with ETA for VCT after departure. N1119V is normally assigned to this route, maintenance permitting.

CLEARANCE:

LEG:	CLEARANCE:	ALTITUDE:
VCT-IAH	GMANN.DUUUK2	7000
IAH-VCT	KEEDS V20 MAGUS	6000

CLEARANCE NOTES: Expect a heading for GMANN from Houston Center if the plane is non-GPS equipped.

FUEL:

LEG:	FUEL REQUIRED:	VENDOR:
VCT-IAH	1000 LBS	VCT Jet Center - 122.70
IAH-VCT	1000 LBS	Allied

***FUEL LOAD TO AT EACH LOCATION, NO ROUND TRIP FUEL. ***

You can leave the fuel slip in the window at both locations if the fueler is not present on arrival.

CONTACT NUMBERS:

CUSTOMER CONTACT NUMBERS

UPS HOUSTON 281-784-7240
UPS VICTORIA 361-575-1262

FBO CONTACT NUMBERS

VCT VICTORIA JET CENTER 361-578-1221

HOTEL CONTACT NUMBERS

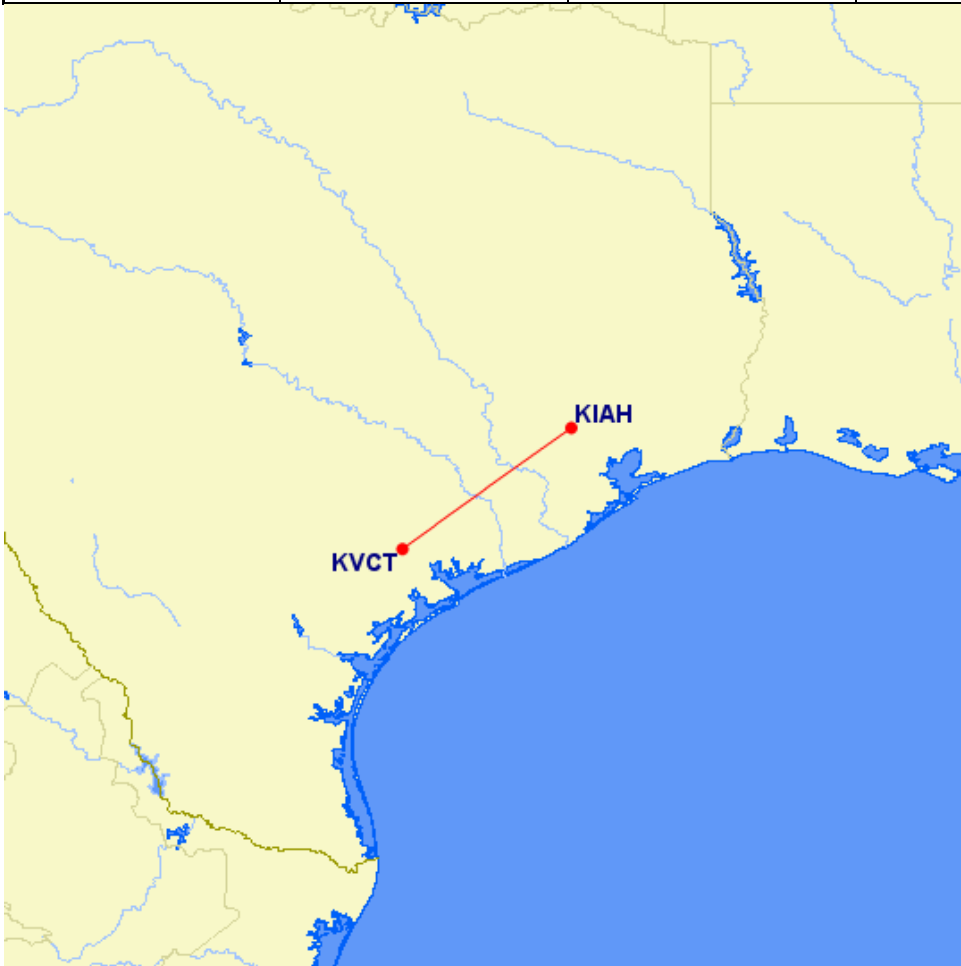
VCT VICTORY INN 361-578-2030
IAH BEST WESTERN 281-548-1402 (free water and we stay in a suite. Eleazar is usually your driver.)

WEATHER CONTACT NUMBERS

VCT ASOS 321-578-9916
IAH ASOS 281-443-6397

RAMP INFORMATION:

LOCATION:	RAMP NAME:	FREQUENCY:	NOTES:
VCT	GA RAMP	122.70	SPOT LABLED "MA"
IAH	UPS CARGO	129.42	MARSHALLERS WILL DIRECT – You U-turn into your spot, facing north.



MARTINAIRE ROUTE DESCRIPTION

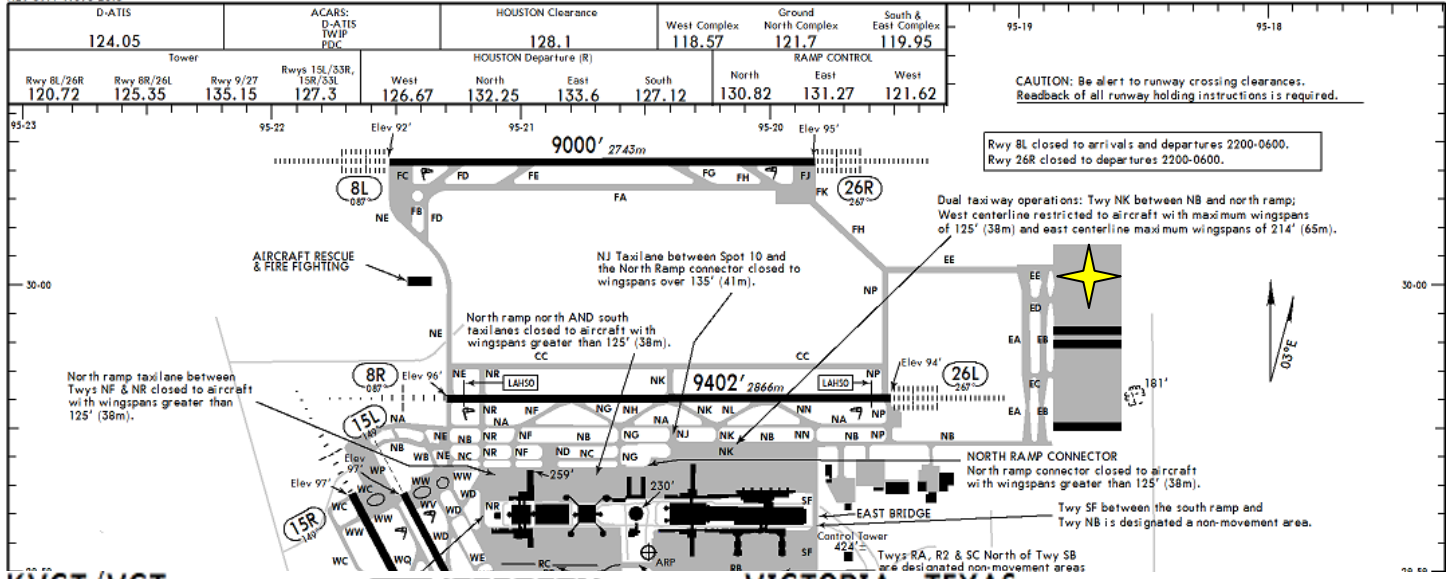
MRA 679

KIAH/IAH
Apt Elev 97'
N29 59.1 W095 20.5

JEPPESSEN
22 JUL 11 (70-9)

HOUSTON, TEXAS

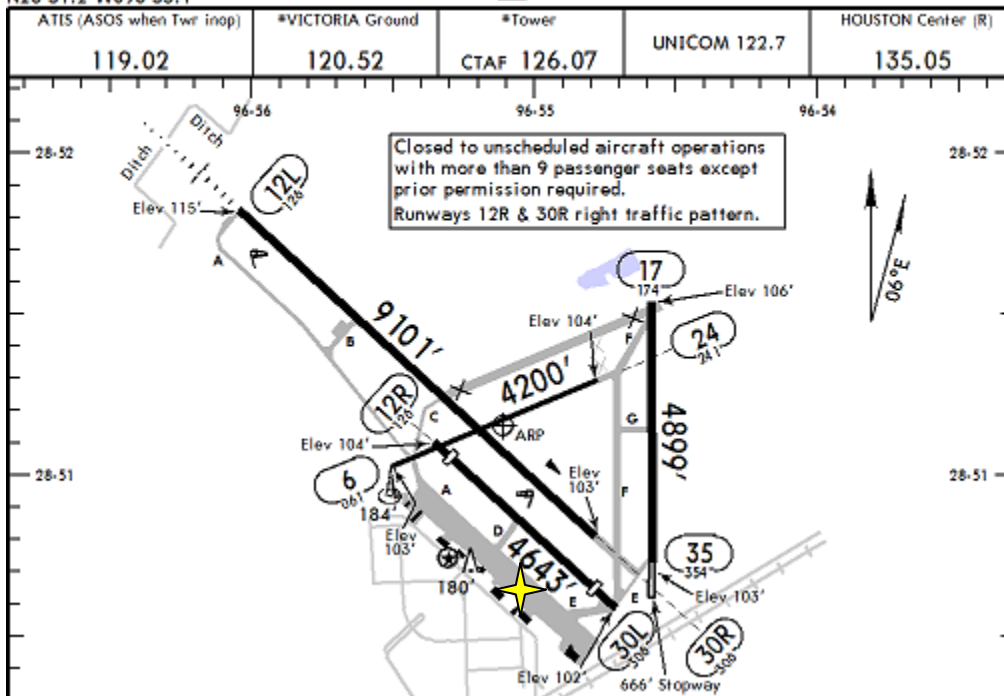
GEORGE BUSH INTERCONTINENTAL/HOUSTON



KVCT/VCT
Apt Elev 115'
N28 51.2 W096 55.1

JEPPESSEN
18 MAR 11 (11-1)

VICTORIA, TEXAS
VICTORIA REGL



MRA Parking =