

MARTINAIRE ROUTE DESCRIPTION

MRA 658

UPDATED: 07/22/2014

ROUTE NUMBER/CUSTOMER: 658 / UPS
ROUTE DESCRIPTION: PSN-TYR-DFW-PSN
DAYS OF OPERATION: MONDAY (PM) THRU SATURDAY (AM)

ROUTE:

| LEG: | DAYS: | SCHEDULED TIMES: | PART 135: | PART 91: |
|---------|----------|------------------|-------------------------------------|----------|
| PSN-TYR | M-FRI | 1915-1935 CT | <input checked="" type="checkbox"/> | |
| TYR-DFW | M-FRI | 1955-2055 CT | <input checked="" type="checkbox"/> | |
| DFW-PSN | M-FRI | 0630-0725 CT | <input checked="" type="checkbox"/> | |
| DFW-TYR | SAT (AM) | 0700-0755 CT | <input checked="" type="checkbox"/> | |
| TYR-PSN | SAT (AM) | 0815-0835 CT | <input checked="" type="checkbox"/> | |

IN POSITION TIME:

PM: PSN M-FRI 1615 CENTRAL
AM: DFW TU-FRI 0530 CENTRAL
AM: DFW SAT (AM) 0600 CENTRAL

APPROX ARRIVAL TIME OF FREIGHT:
1900 CENTRAL PSN – 0620 CENTRAL DFW

| DEST: | SUGG ALTERNATE: |
|-------|-----------------|
| KPSN | KTYR |
| KTYR | KPSN |
| KDFW | KADS |

ROUTE NOTES:

CLEARANCE:

| LEG: | ROUTE: | ALTITUDE: |
|---------|---|-----------|
| PSN-TYR | DIRECT FZT DIRECT TYR | 3000 |
| TYR-DFW | DIRECT COY.COY6 ARR or COY.DUMPY 3 ARR | 6000 |
| DFW-PSN | HUBBARD 6 DEP-TYLER TRANSITION (HUBB6.TYR) DIRECT PSN | 5000 |
| DFW-TYR | HUBBARD 6 DEP-TYLER TRANSITION (HUBB6.TYR) DIRECT TYR | 7000 |
| TYR-PSN | DIRECT FZT DIRECT PSN | 3000 |

CLEARANCE NOTES:

If GPS Navigation is used

Center or approach will frequently give you direct HOWDY or YEAGR depending on flow. Saves ~10 minutes.

PSN- When WTX is IFR must call center @ 1-800-722-6208 because center not reachable on ground for clearance. Help Load.

FUEL:

| LEG: | FUEL REQUIRED: | VENDOR: |
|------|----------------|---|
| PSN | 800 LBS | CITY OF PALESTINE (903-723-0111) 122.70 |
| DFW | 800 LBS | SWISSPORT |

FUEL LOAD TO START EACH RUN. NO ROUNDTRIP FUEL

*** FUEL SLIP IN WINDOW IN DFW***

Advise dispatch ASAP if additional fuel uplift is needed on either end due to WX. PSN FBO closes at 1700.

MARTINAIRE ROUTE DESCRIPTION

MRA 658

CONTACT NUMBERS:

CUSTOMER CONTACT NUMBERS

| | | |
|-----|-----|--------------|
| TYR | UPS | 903-535-9176 |
| PSN | UPS | 800-754-8118 |
| | | 903-723-0842 |
| DFW | UPS | 972-456-4816 |

FBO CONTACT NUMBERS

| | | |
|-----|------------------|--------------|
| PSN | CITY OF PSN | 903-723-0111 |
| TYR | TYLER JET CENTER | 903-597-1334 |

HOTEL CONTACT NUMBERS

| | | |
|-----|--------------|--------------|
| PSN | BEST WESTERN | 903-723-4655 |
| DFW | MOTEL 6 | 972-870-0530 |

WEATHER CONTACT NUMBERS

| | | |
|-----|------|--------------|
| PSN | AWOS | 903-729-3641 |
| TYR | ASOS | 903-535-9105 |
| DFW | ASOS | 972-453-0992 |

RAMP NOTES: Before entering DFW UPS ramp, contact UPS Operations on 129.90 with flight number, tail number, time on, weight, percentage bulk, and fuel request for AM ops. Ops will clear you to the “west side”. For AM ops, before leaving UPS ramp, taxi to the northwest corner of the ramp and contact Ops on 129.90 with flight number and tail number.



MARTINAIRE ROUTE DESCRIPTION

MRA 658

KTYR/TYR


Apt Elev **544'**
N32 21.2 W095 24.1

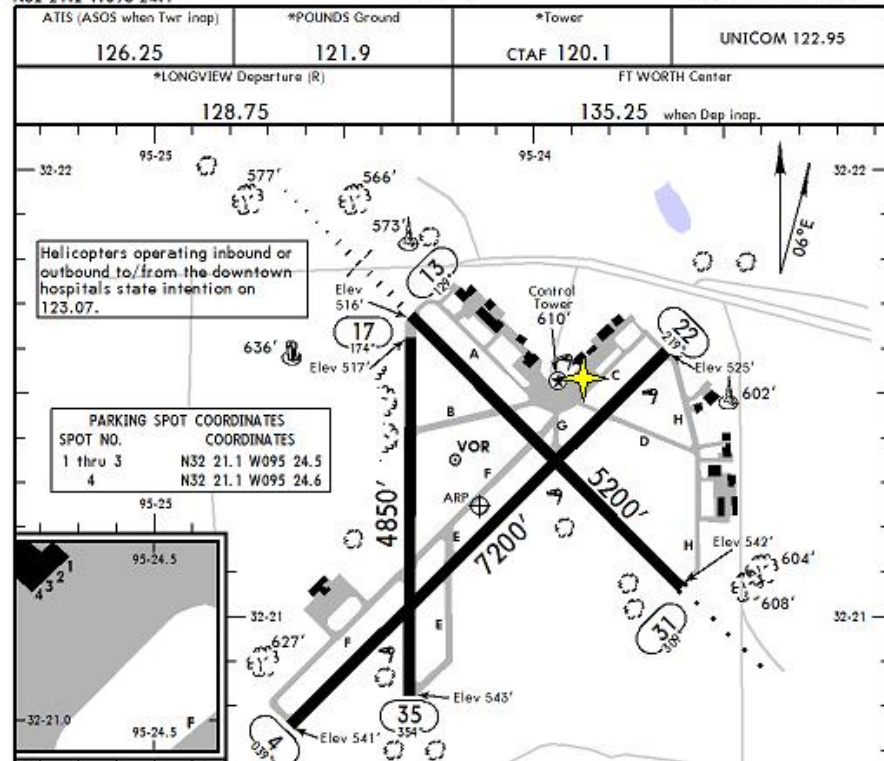
JEPPESEN

29 APR 11 (11-1) Eff 6 May

TYLER, TEXAS

TYLER POUNDS REGL

MRA Parking = 



KPSN/PSN

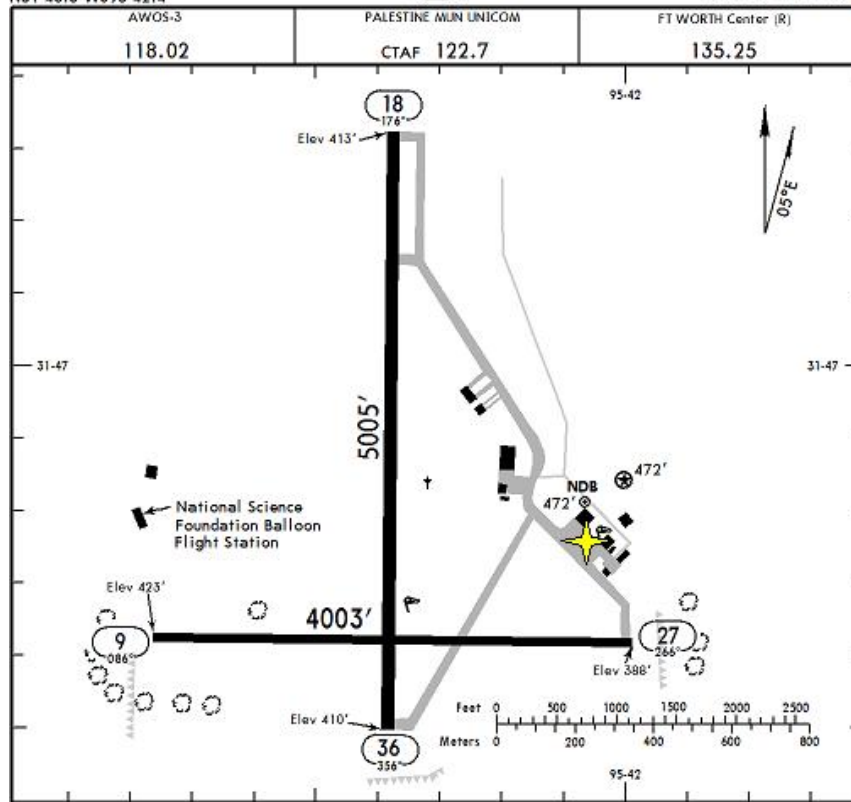
Apt Elev **423'**
N31 46.8 W095 42.4

JEPPESEN

18 SEP 09 (10-9)

PALESTINE, TEXAS

PALESTINE MUN



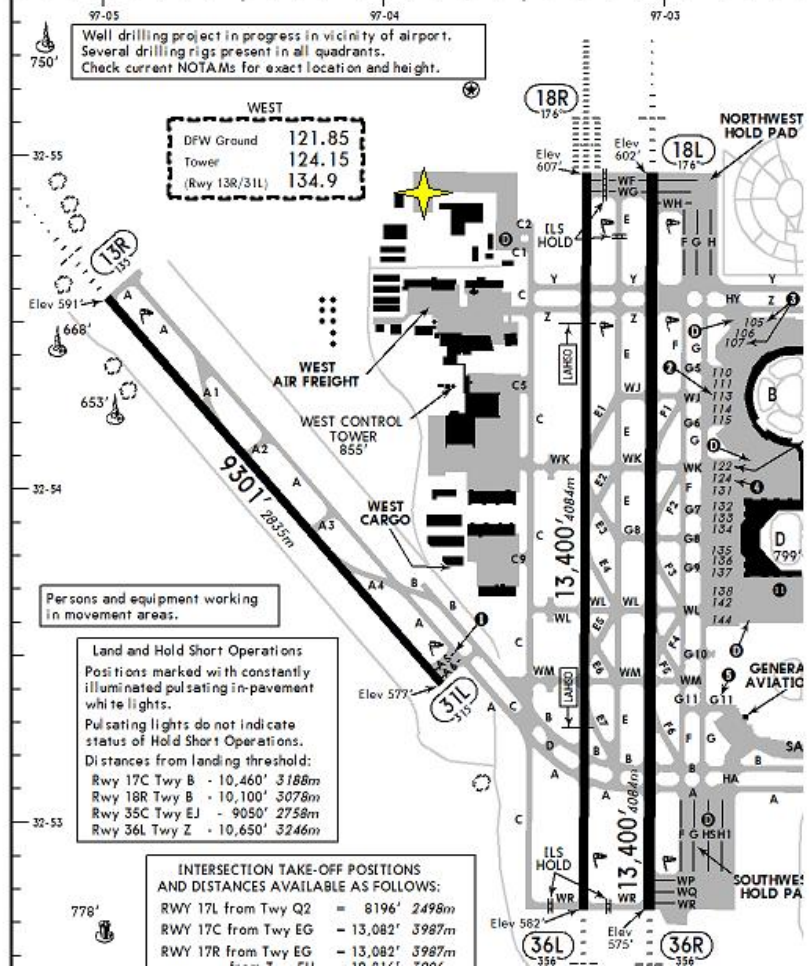
MARTINAIRE ROUTE DESCRIPTION

MRA 658

KDFW/DFW
Apt Elev 607'
N32 53.8 W097 02.3

JEPPesen
10 JUN 11 (60-9)

| | | | | | | |
|------------------|------------------------|---------------|------------------------|------------------------|--------|--------|
| D-ATIS Departure | ACARS: D-ATIS PDC TWIP | DFW Clearance | DFW Ramp Tower | West | Ground | East |
| 135.92 | | 128.25 | 129.95 | 121.85 | 121.65 | 121.8 |
| Tower | | | | REGIONAL Departure (R) | | |
| West | East | Rwys 13R/31L | Rwys 13L/31R & 17L/35R | North | South | West |
| 124.15 | 126.55 | 134.9 | 127.5 | 124.82 | 125.12 | 126.47 |
| | | | | East | | |
| | | | | 118.55 | | |



Well drilling project in progress in vicinity of airport. Several drilling rigs present in all quadrants. Check current NOTAMS for exact location and height.

| | |
|---------------|--------|
| WEST | |
| DFW Ground | 121.85 |
| Tower | 124.15 |
| (Rwy 13R/31L) | 134.9 |

Persons and equipment working in movement areas.

Land and Hold Short Operations
Positions marked with constantly illuminated pulsating in-pavement white lights.
Pulsating lights do not indicate status of Hold Short Operations.
Distances from landing threshold:
Rwy 17C Twy B - 10,460' 3188m
Rwy 18R Twy B - 10,100' 3078m
Rwy 35C Twy EJ - 9050' 2758m
Rwy 36L Twy Z - 10,650' 3246m

| | |
|---|-----------------|
| INTERSECTION TAKE-OFF POSITIONS AND DISTANCES AVAILABLE AS FOLLOWS: | |
| RWY 17L from Twy Q2 | = 8196' 2498m |
| RWY 17C from Twy EG | = 13,082' 3987m |
| RWY 17R from Twy EG | = 13,082' 3987m |