

MARTINAIRE ROUTE DESCRIPTION

MRA 655

UPDATED: 07/22/2014

ROUTE NUMBER/CUSTOMER: 655 / UPS
ROUTE DESCRIPTION: TYR-DFW-TYR
DAYS OF OPERATION: MONDAY (PM) THRU FRIDAY (AM)

ROUTE:

LEG:	DAYS:	SCHEDULED TIMES:	PART 135:	PART 91:
TYR-DFW	M-THUR	1940-2040 CT	<input checked="" type="checkbox"/>	
DFW-TYR	TU-FRI	0630-0730 CT	<input checked="" type="checkbox"/>	

IN POSITION TIME:

PM: TYR M-FRI 1840 CENTRAL
AM: DFW TU-FRI 0530 CENTRAL
APPROX ARRIVAL TIME OF FREIGHT:
1910 CENTRAL TYR – 0620 CENTRAL DFW

DESTINATION:	SUGG ALTERNATE:
KTYR	KGGG
KDFW	KSHV

ROUTE NOTES:

This airplane/pilot also covers route # 625 on Saturday morning. See 625 route description for details.

CLEARANCE:

LEG:	ROUTE:	ALTITUDE:
TYR-DFW	CQY.DUMPY4 (south flow) or CQY.CQY7 (north flow)	6000
DFW-TYR	HUBB6.TYR	7000

CLEARANCE NOTES:

If GPS equipped, expect HOWDY or YEAGR (depending on flow) as a shortcut with Center.

Contacting approach advise the weather and that you're parking on the west side. They may accommodate by letting you land on the 18s/36s or 13R.

FUEL:

LEG:	FUEL REQUIRED:	VENDOR:
TYR-DFW	AS REQUIRED	TYLER JET CENTER (903-597-1334) 130.67
DFW-TYR	1000 LBS (ROUND TRIP)	SWISSPORT

FUEL LOAD TO START RUNS EACH NIGHT IN DFW.

FUEL NOTES:

*** FUEL SLIP IN WINDOW IN DFW***

CONTACT NUMBERS:

CUSTOMER CONTACT NUMBERS

DFW UPS
TYR UPS

FBO CONTACT NUMBERS

TYR TYLER JET CENTER 903-597-1334
DFW SWISSPORT (FUEL) 469-844-2055

HOTEL CONTACT NUMBERS

TYR HOLIDAY INN 903-561-5800 (5701 S. Broadway Ave)
DFW HAWTHORNE 972-871-1412

WEATHER CONTACT NUMBERS

TYR ASOS 903-535-9105
DFW ASOS 972-453-0992

RAMP INFORMATION:

LOCATION:	RAMP NAME:	FREQUENCY:	NOTES:
TYR	<i>TYLER JET</i>	<i>130.67</i>	THERE ARE THREE YELLOW TIRE SPOTS MARKED ON NE PORTION OF RAMP
DFW	<i>UPS CARGO</i>	<i>129.90</i>	MARSHALLERS WILL DIRECT

RAMP NOTES:

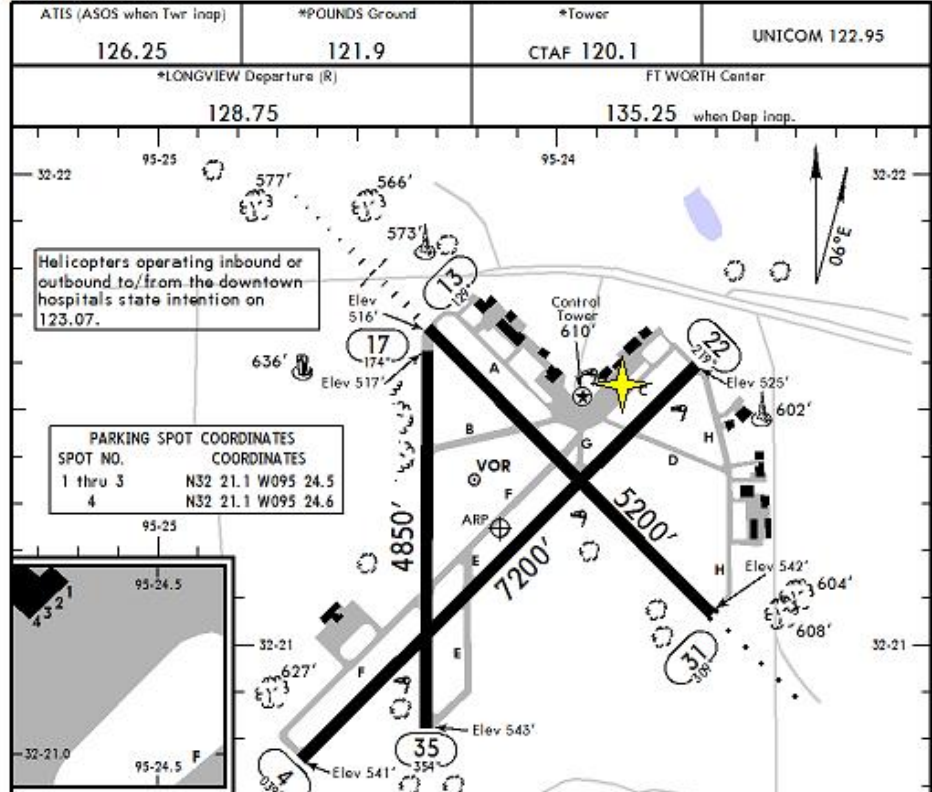
Before entering UPS ramp, you must call on 129.9, DFW OPS, with flight number and TIME ON!
Before leaving the UPS ramp, you must call on 129.9, with flight number and tail number.

ASSIST DRIVERS WITH LOADING IN TYR. RIDE MARTINAIRE VAN IN DFW TO FOOD/HOTEL.

MARTINAIRE ROUTE DESCRIPTION

MRA 655

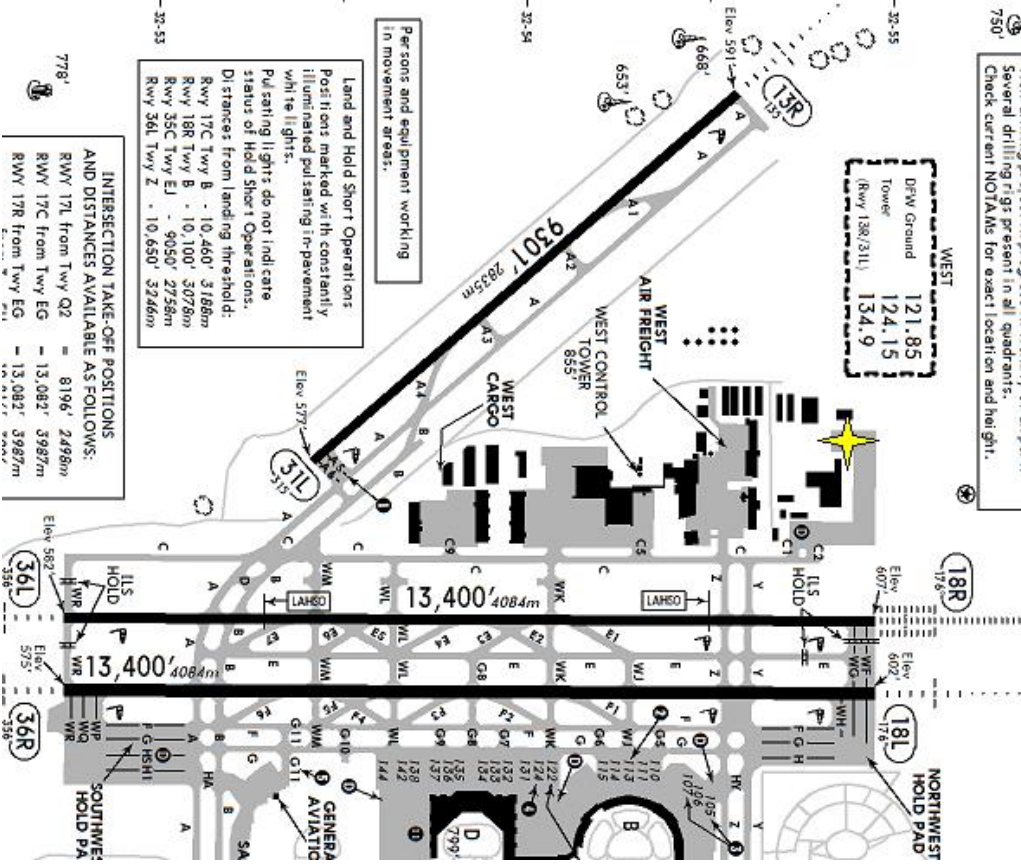
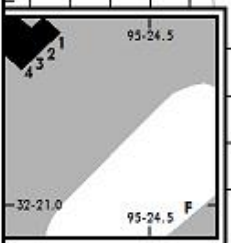
KTYR/TYR Apt Elev **544'** **JEPPesen** **TYLER, TEXAS**
 N32 21.2 W095 24.1 29 APR 11 **11-1** Eff 5 May **TYLER POUNDS REGL**



MRA Parking =

PARKING SPOT COORDINATES

SPOT NO.	COORDINATES
1 thru 3	N32 21.1 W095 24.5
4	N32 21.1 W095 24.6



Persons and equipment working in movement areas.

Land and Hold Short Operations: Positions marked with constantly illuminated pulsating lights in pavement will be lit.

Pulsating lights do not indicate status of Hold Short Operations. Distances from landing threshold:

- Rwy 17C Twy B - 10,460' 3166m
- Rwy 18R Twy B - 10,100' 3076m
- Rwy 35C Twy E - 9050' 2756m
- Rwy 36L Twy Z - 10,650' 3246m

INTERSECTION TAKE-OFF POSITIONS AND DISTANCES AVAILABLE AS FOLLOWS:

- Rwy 17L from Twy Q2 = 8196' 2496m
- Rwy 17C from Twy EG = 13,082' 3987m
- Rwy 17R from Twy EG = 13,082' 3987m

KDFW/DFW 10 JUN 11 **60-9** **JEPPesen**
 Apt Elev **607'** N32 53.8 W097 02.3

D-ATIS Departure	ACARS: D-ATIS	DFW Clearance	DFW Ramp Tower	West	East
135.92	FDIC TWIP	128.25	129.95	121.85	121.65
124.15	Rwys 13R/31L	134.9	127.5	124.82	125.12
	Rwys 13L/31R & 17L/35R			126.47	118.55

WEST Tower: DFW Ground 121.85, Tower 124.15, Rwy 13R/31L 134.9

REGIONAL Departure (R): West 121.85, East 121.65, West 126.47, East 118.55

Well drilling project in progress in vicinity of airport. Several drilling rigs present in all quadrants. Check current NOTAMS for exact location and height.