

MARTINAIRE ROUTE DESCRIPTION

MRA 630

UPDATED: 06/09/2017

ROUTE NUMBER/CUSTOMER: 630/UPS

ROUTE BASE: MON(PM) –SAT(AM)

DAYS OF OPERATION: MON (PM) – SAT (AM)

ROUTE:

LEG:	DAYS:	SCHEDULED TIMES:	PART 135:	PART 91:
ECP-ABY	MON – FRI (PM)	20:30-21:15CT (21:30-22:15 ET)	✓	
ABY-ECP	TUE - SAT (AM)	05:35-06:15CT (6:35-07:15 ET)	✓	

DESTINATION:	SUGG ALTERNATE:
KABY	KMCN, KCSG
KECP	KPNS, DHN

IN POSITION TIME:

PM: ECP (MON: FRI) 19:30CT
UPS#1366 TYPICAL ARRIVAL 0520 ET
TYPICAL ARRIVAL OF FREIGHT 0600 ET (0540 FOR THE METRO)

ROUTE NOTES:

ABY TOWER CLOSED UNTIL 0800, CALL JAX CENTER 125.75 READY AT RUNWAY FOR IFR.

CLEARANCE:

LEG:	ROUTE:	ALTITUDE:
ABY-ECP	DIRECT	6000
ECP-ABY	DIRECT	5000

CLEARANCE NOTES:

FUEL:

LOCATION:	FUEL REQUIRED	VENDOR:	FREQ:
ABY	1200 – 1500 LBS	EAGLES OF AMERICA	129.80
ECP	AS REQUIRED	SHELTAIR	130.0

FUEL NOTES: **ROUND TRIP FUEL FROM ABY PREFERRED **

You will be fueled in the AM after you receive your final weight. If able, upload round trip fuel. If not, fuel is available in ECP.
FBO Pedestrian Gate code in ABY is 1540

CONTACT NUMBERS:

CUSTOMER CONTACTS:

MARTINAIRE ROUTE DESCRIPTION

MRA 630

ABY UPS 229-888-8183
ECP UPS (Driver) 850-896-7429

WEATHER CONTACTS:

ABY ASOS 229-434-7494
ECP AWOS 850-235-7857

FBO CONTACTS:

ABY EAGLES OF AMERICA: 229-434-8787
ECP SHELTAIR 850-233-4717 (After hours 10pm to 6am 850-630-9748)

HOTEL CONTACTS:

ABY-Rent room from Eagles of America
ABY ECP - Days Inn Beach 850-233-3333

RAMP INFORMATION:

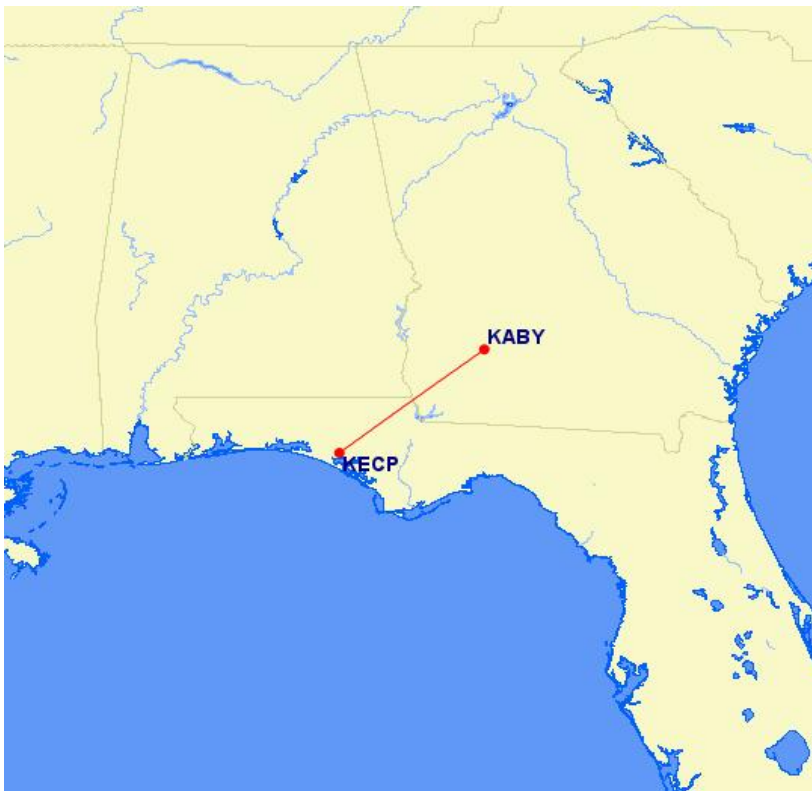
LOCATION:	RAMP NAME:	FREQUENCY:	NOTES:
ABY	CARGO RAMP	129.42	TOWER OPEN 0800-2000 LOCAL
ECP	CARGO RAMP		SOUTH OF AIRLINE TERM

RAMP NOTES:

ABY – Marshallers are available leaving ABY if you want them (they usually leave you to it); when you return, park yourself, and set the cones and chocks.

There are not any tie downs on the UPS ramp in ABY. There are tie downs on the FBO ramp (East of ECHO, North of CHARLIE)

ECP – Taxi in on echo 2 up to the building, make hard left 90 degree turn and stop (leaving the nose wheel turned, to make it easier to depart as it's a very tight cargo area) Park aircraft at Sheltair. Taxi to UPS ramp to load/unload.



MARTINAIRE ROUTE DESCRIPTION

MRA 629

KABY/ABY

Apt Elev **196'**
N31 32.1 W084 11.7

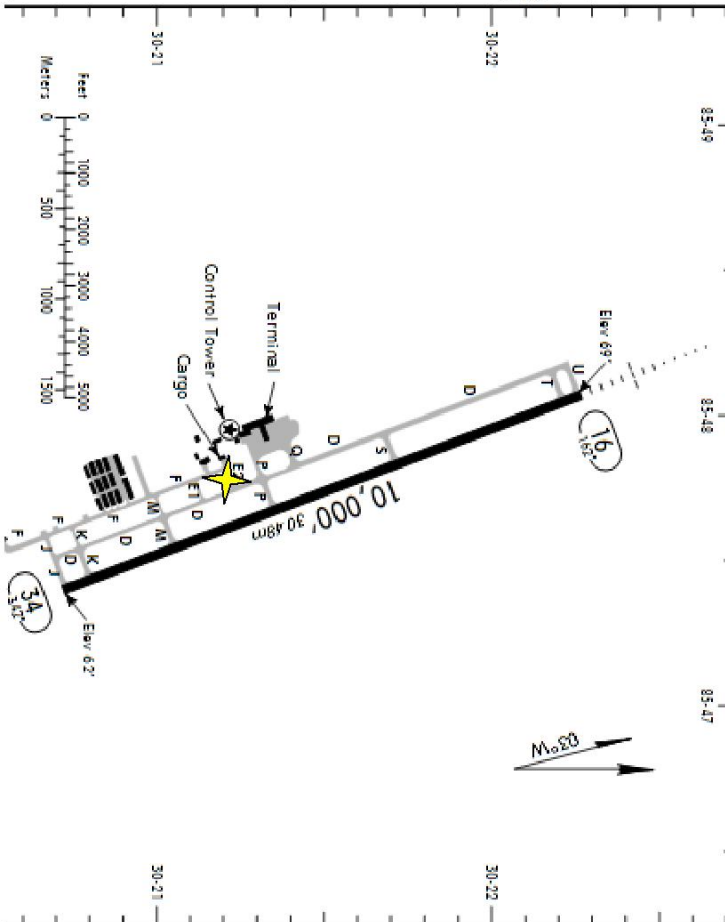
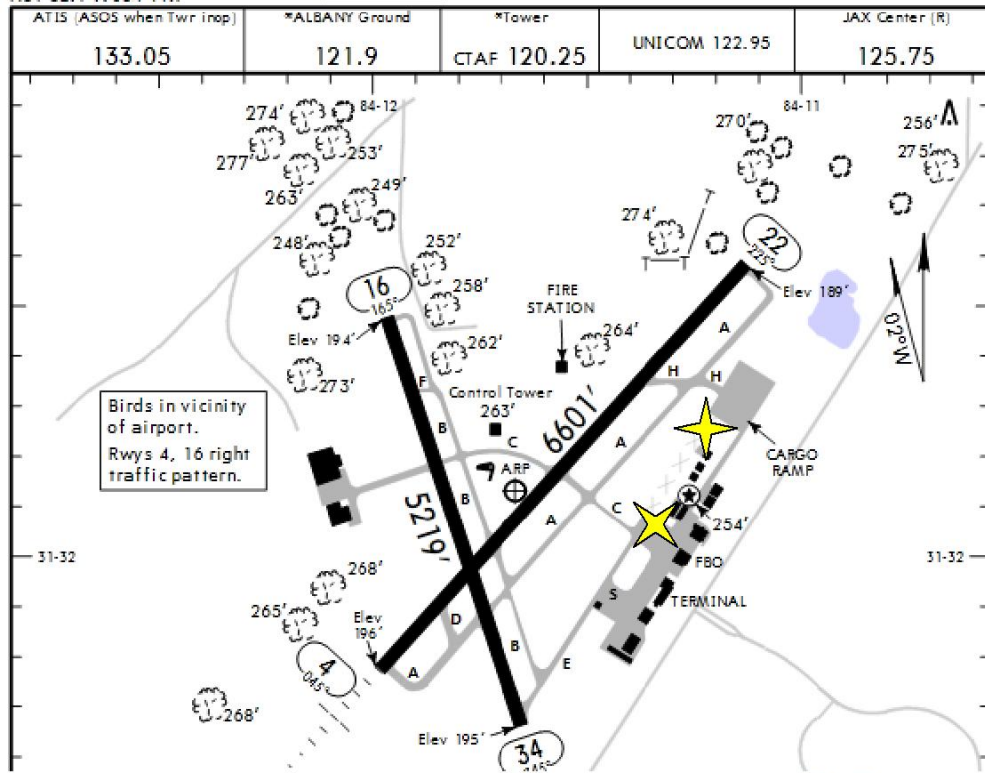
JEPPESSEN

21 AUG 09
Eff 27 Aug

(11-1)

ALBANY, GA

SOUTHWEST GEORGIA REG



KECP/ECP		JEPPESSEN		PANAMA CITY, FLA	
Apt Elev 69'		1 APR 11 (11-1)		NORTHWEST FLORIDA BEACHES INTL	
N30 21.5 W086 47.7		*PANAMA CITY Ground		*TINDALL Departure RT	
ATIS (ASOS when Twr Inop)	119.97	Tower	121.65	Below 3000'	119.1
		CTAF	118.95	Above 3000'	125.2
				JAX Center	120.82 when Dep Inop